



AUTOMATE YOUR BUSINESS

What is e-BRIDGE Capture & Store?

e-BRIDGE Capture & Store transforms your paper based documents into digital files by utilising the scan function on your Toshiba multi-function device and files them into your preferred electronic storage location.

Why e-BRIDGE Capture & Store?

e-BRIDGE Capture and Store is a solution designed to save time and resources by removing your manual processes for archiving paper based documents through digital automation. Document workflows tailored to your business are created on your central server with an intuitive interface making it easy and simple to use.



What's new with e-BRIDGE Capture & Store V5?

- Restyled UI & Workflow Designer
- Smart OCR Module
- Smart Invoice Module
- New e-BRIDGE Capture & Store App (Mobile Client)
- New WebClient
- New Toshiba Embedded Client App
- New Connectors: iManage v10, Salesforce & PropertyMe
- And many more enhancements with version 5...

With 3 simple steps you could save time and simplify your archival process

Capture

e-BRIDGE Capture & Store allows administrators to create automatic workflows through an easy-to-use web-based server interface. This allows users to quickly and easily set extensive workflows in motion. Seamless integration with Toshiba multi-function devices converts paper based documents through its powerful OCR functionality into digital format to be automatically processed in the workflow.

Not to mention digital documents that you receive by e-mail are quickly and automatically picked up and processed. This means you no longer have to process documents manually, saving you time, preventing manual errors and increasing efficiency.

Process

Correctly naming and indexing documents is essential, so that you can quickly find them at a later date. With e-BRIDGE Capture & Store it gives you various index options to select. It is also possible to name and index automatically without user intervention.

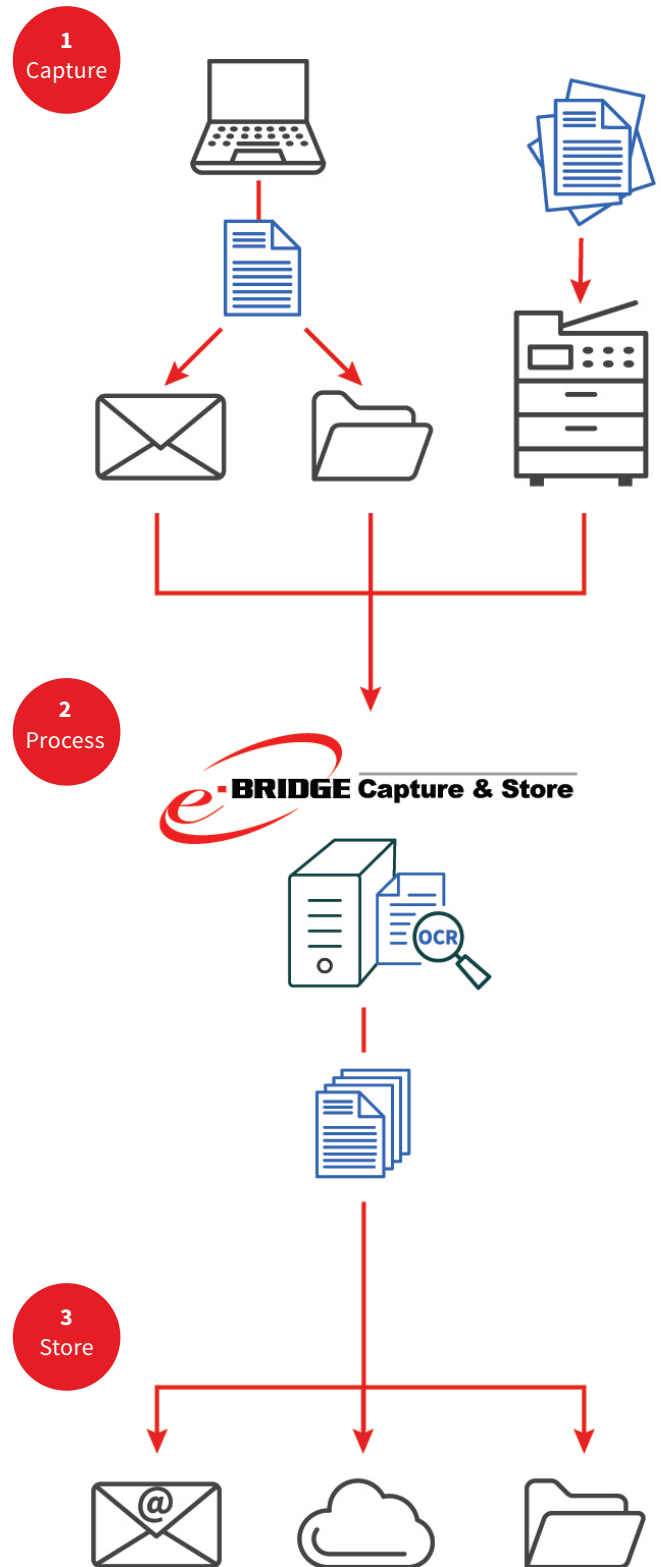
The built-in OCR functionality makes it possible to create documents that you can search, edit and archive. With zone OCR and barcode recognition, specific data of a document is read, such as an invoice number or customer number. This information is then automatically saved with the document.

Store

After scanning and processing, the document must be stored in the desired location. The integration with business applications(s) is completed by means of connectors. These connectors ensure that documents and their associated metadata are easily and correctly stored in your system, such as SharePoint, Google Drive, OneDrive, Salesforce, MYOB, M-Files and many others.

It is also possible to save simultaneously to different and/or multiple destinations, so you can take full advantage of a modern digital documents workflow.

With e-BRIDGE Capture & Store, workflow automation is easy with 3 simple steps.



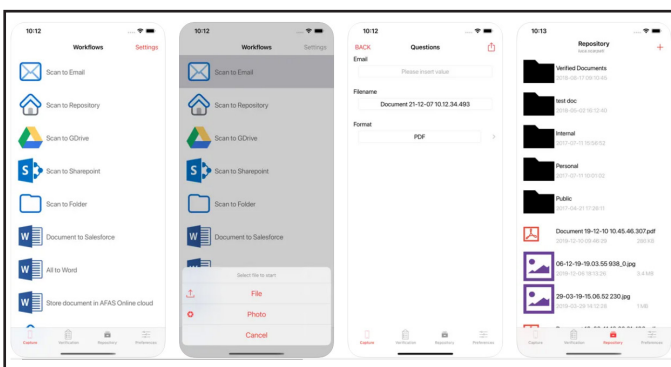
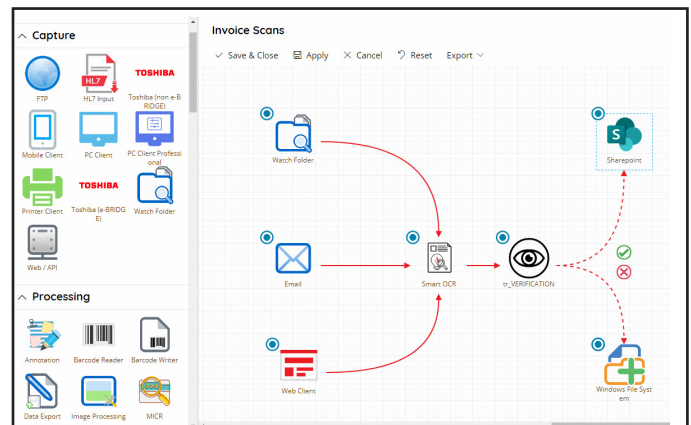
Convenience

Setting up Workflows

Setting up complex workflows is made super easy. Using a web-based graphic design tool, you can drag and drop to create a workflow in steps.

The visual split into the three stages capture, processing and storing make it easy to understand the functionality of the workflow.

e-BRIDGE Capture & Store makes office automation easy, both for the user and for the administrator.



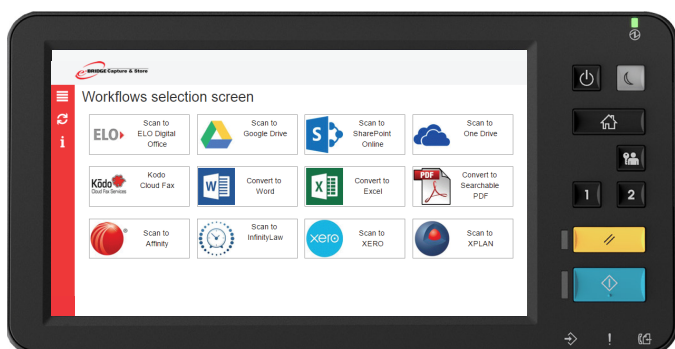
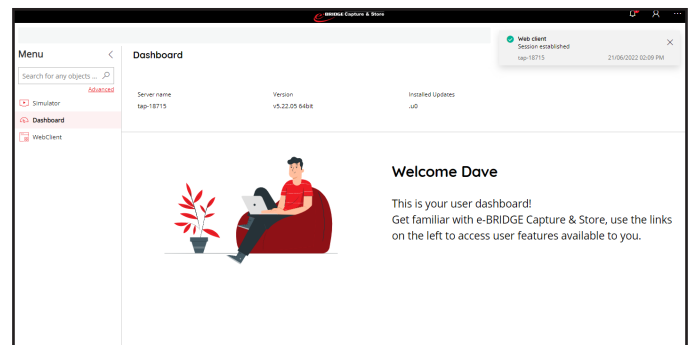
Mobile Client

Mobile Client will allow to import digital documents or take photos of paper documents from any mobile devices equipped with Android or iOS platforms via the official mobile apps.

Web Client

Web Client will allow users to import documents from their PC via a web browser and users will be able to process a document by selecting an appropriate workflow.

This is particularly useful for electronic documents that have come via e-mail and need to be processed and filed in the right location.



Scan Paper Documents at the Control Panel

With the built-in e-BRIDGE Capture & Store client, the user can easily select the desired workflow on the multifunctional system. The built-in client helps the user make the right selection.

For example, users can add details related to the cost centres as early as scanning the document. e-BRIDGE Capture & Store can then automatically forward the document to the right person in the organisation.

Full Management

With the extensive administrator dashboard, the status of the application and additional services can be monitored. Both the corporate printers and desktop clients are managed from here as well as workflows or users with individual access rights.

Administrators can remotely access the web-base e-BRIDGE Capture & Store dashboard depending on the organisation's network configuration and policies. This means that the administrator does not have to be physically present at the server.

About Toshiba

Toshiba (Australia) Pty Limited is part of the globally operating Toshiba Tec Corporation, active in various high-tech industrial sectors.

Toshiba is a leading provider of information technology, operating across multiple industries - ranging from retail, education and business services to hospitality and manufacturing. With headquarters in Japan and over 80 subsidiaries worldwide, Toshiba Tec Corporation helps organisations transform the way they create, record, share, manage and display information. For more information please contact us:

TOSHIBA (Australia) Pty Limited

Building C, 12-24 Talavera Road,
North Ryde, NSW 2113. Australia
Tel: 1300 794 202

New Zealand

32 Lunn Avenue, Mt Wellington
Tel: 09 570 8530

www.toshiba-business.com.au
www.toshiba-business.co.nz

Together Information is Toshiba's vision for how people and organisations create, record, share, manage and display ideas and data.

It is based on our belief that the most successful organisations are those that communicate information in the most efficient way.

We make that possible through an integrated portfolio of industry-specific solutions, all of which reflect Toshiba's commitment to the future of the planet.

For more information please visit:
www.toshiba-business.com.au
www.toshiba-business.co.nz