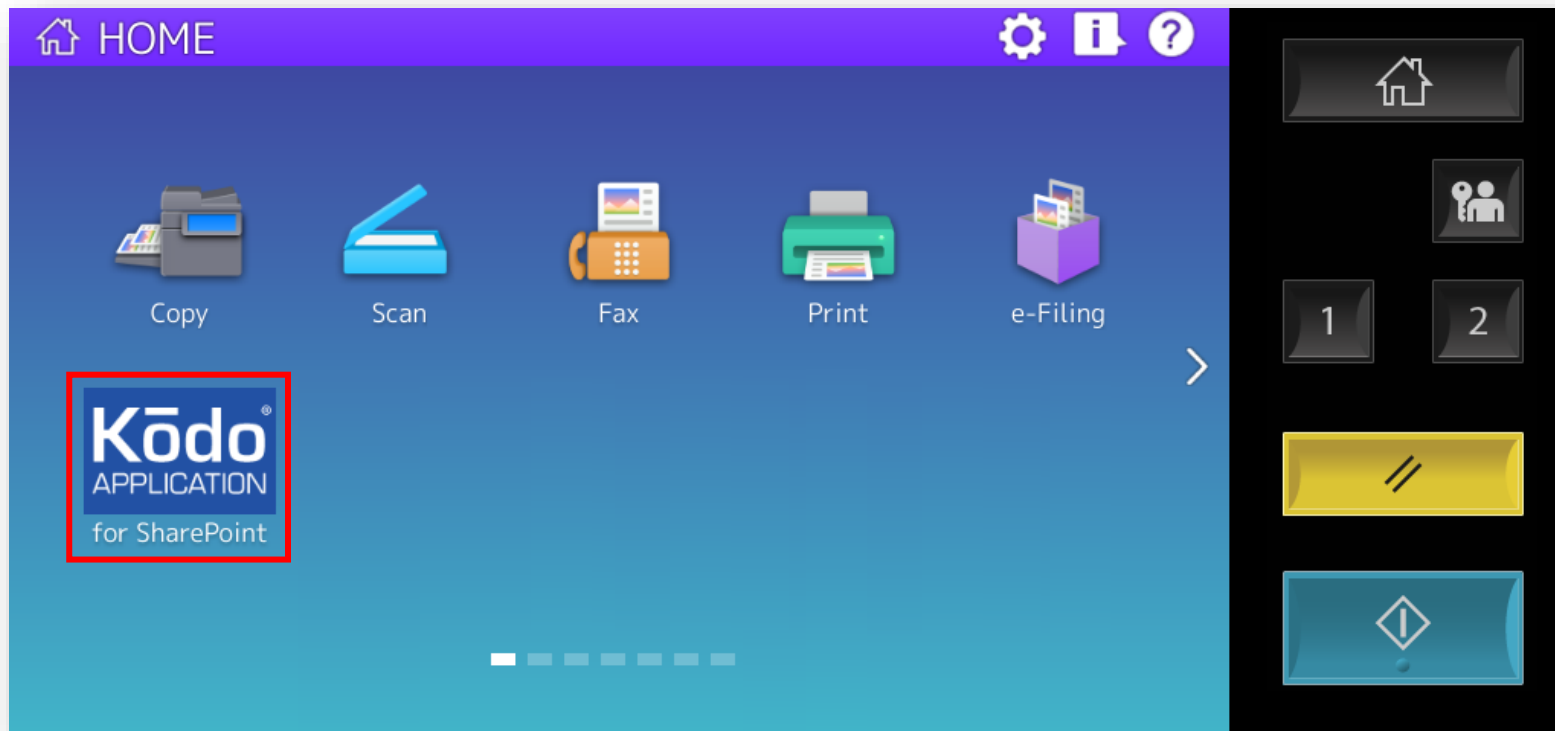


# TOSHIBA MFP panel user experience - Kodo Application for SharePoint on-premise

## Launching the application

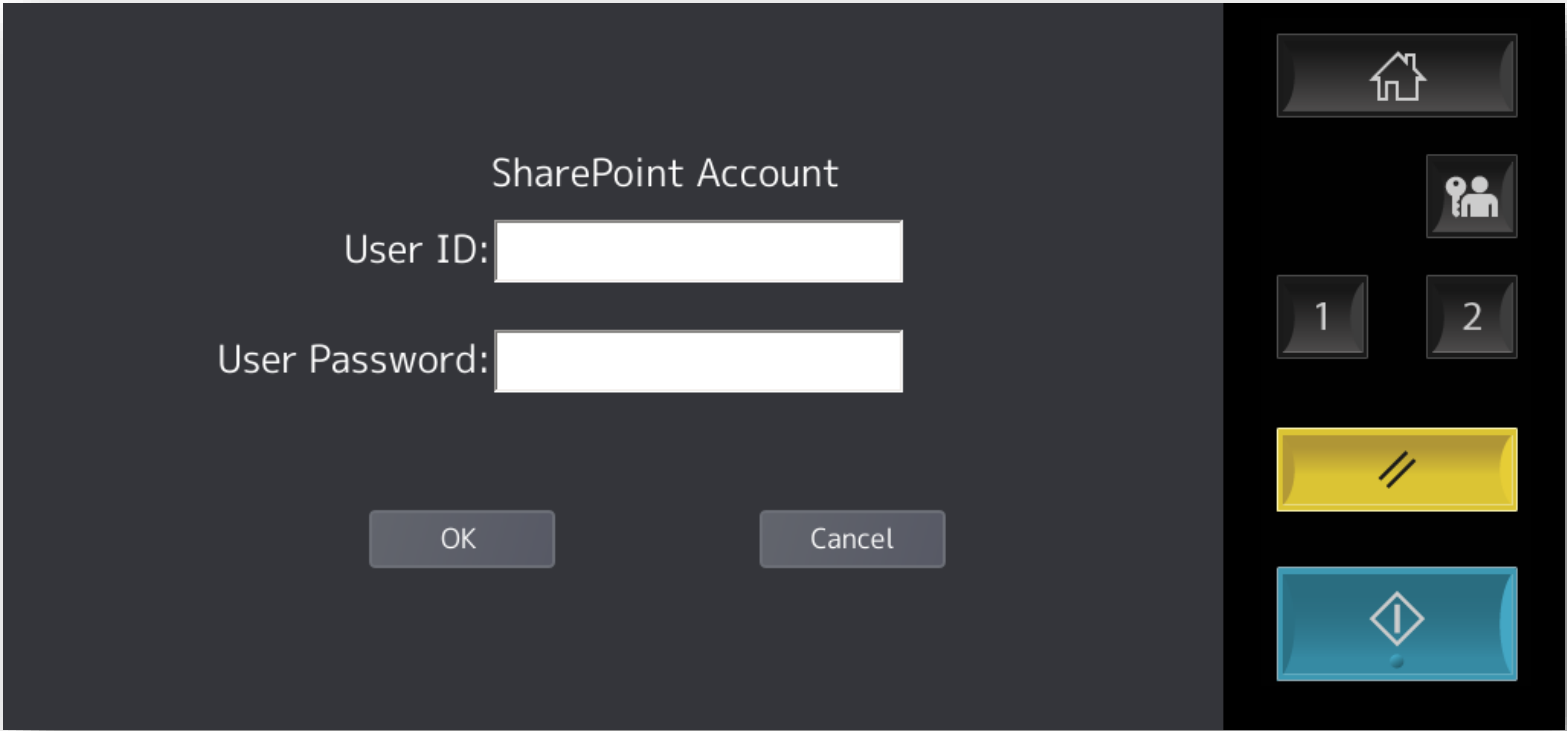
- Simply touch the application icon to launch



*Note! contents, design and layout of the landing page is customisable to suit your requirements*

# TOSHIBA MFP panel user experience - Kodo Application for SharePoint on-premise

User Authentication at the MFP panel to access your SharePoint site

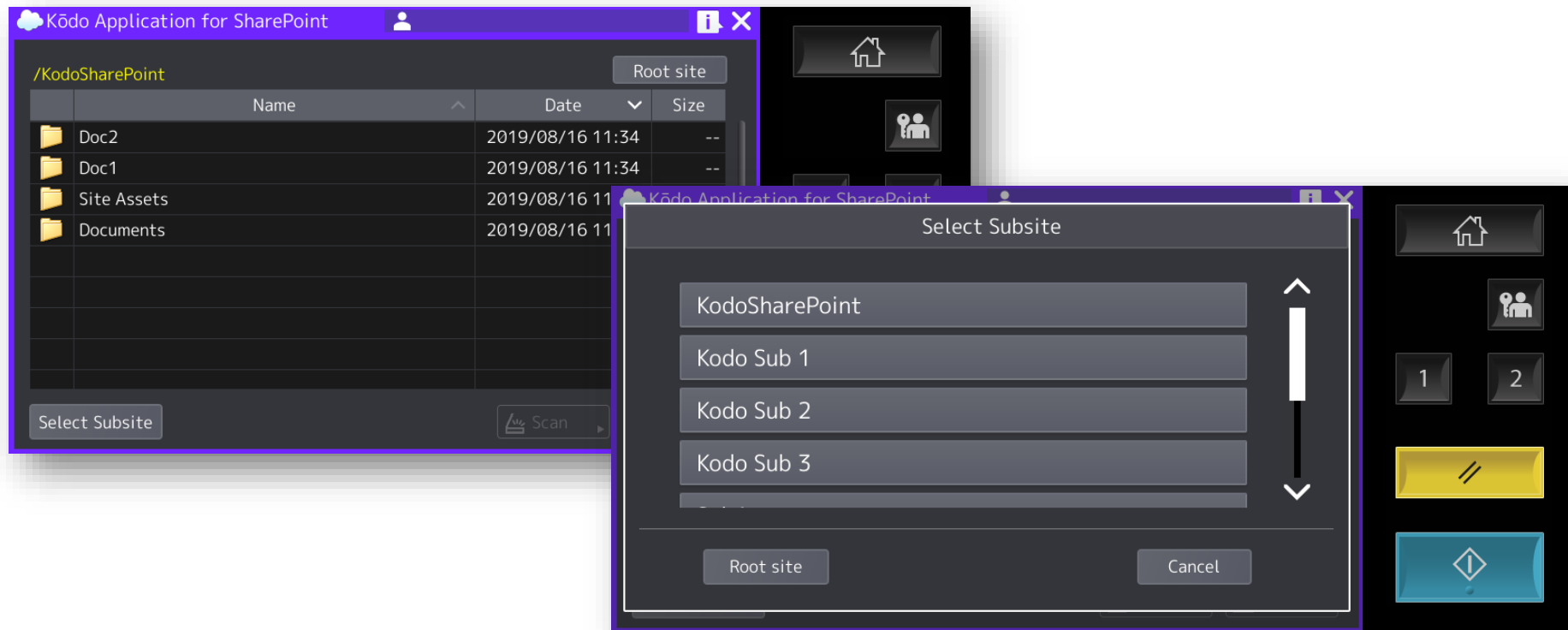


*Note! if fixed authentication is used this screen will not be presented to the user*

# TOSHIBA MFP panel user experience - Kodo Application for SharePoint on-premise

## Home page for SharePoint

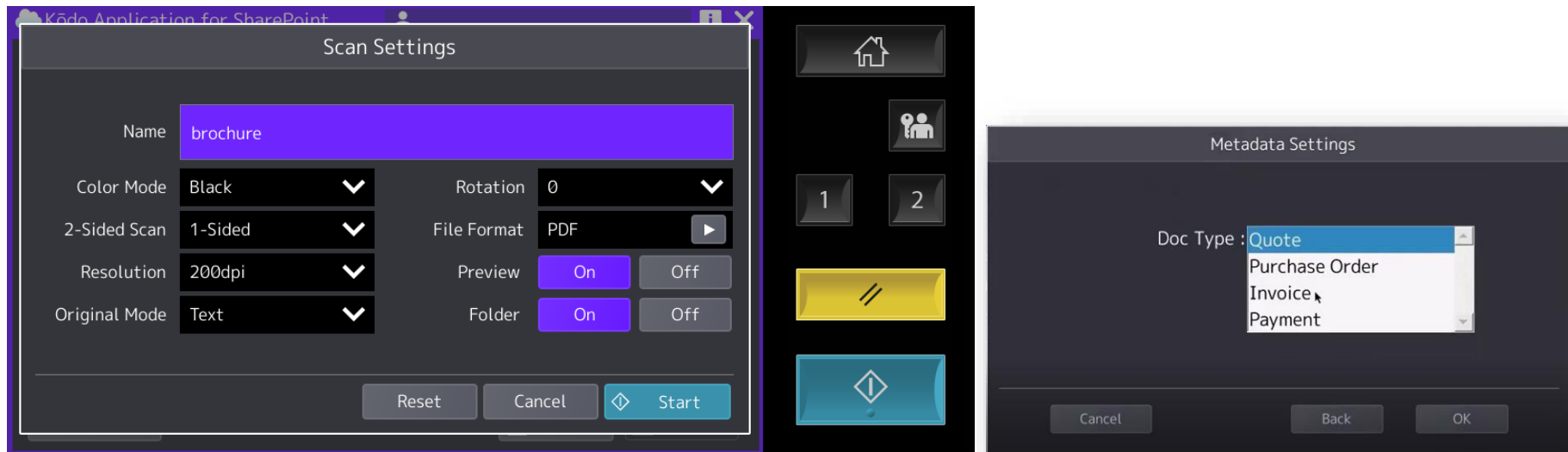
- Once authenticated, users are connected directly to their SharePoint site ready for scanning or printing documents right at the MFP panel. The user can browse into their available folder structure and also select from their available subsites.



# TOSHIBA MFP panel user experience - Kodo Application for SharePoint on-premise

## Scanning documents to your SharePoint site

- Browse your SharePoint Site, select the location then SCAN with the options required
- Supports SharePoint Site mandatory metadata entry, dynamically at the MFP panel.

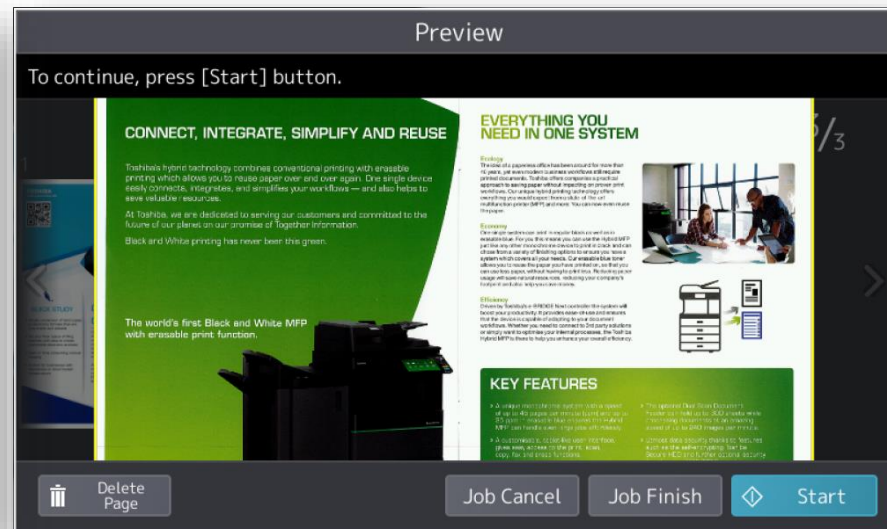
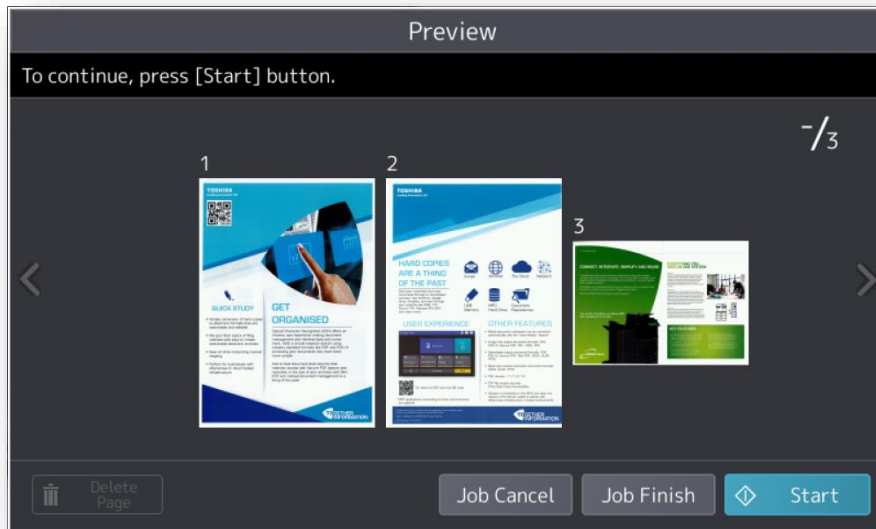


<b>File Name</b>	Auto, freetext	<b>Rotation (deg)</b>	0, 90, 180, 270
<b>Colour Mode</b>	Auto Colour, Full Colour, Greyscale, Black	<b>File formats</b>	Std) TIFF, JPEG, PDF, PDF/A Opt) Searchable PDF/PDF/A, editable DOCX
<b>2-Sided</b>	1-2 sided, 2-sided	<b>Preview</b>	Thumbnail preview with pinch/zoom, add, delete
<b>Resolution (dpi)</b>	100, 150, 200, 300, 400, 600	<b>Folder</b>	Auto create folder using authenticated user name
<b>Original Mode</b>	Text, Text/Photo, Photo	<b>File Size</b>	Max 64MByte
		<b>Metadata entry</b>	SharePoint mandatory metadata

# TOSHIBA MFP panel user experience - Kodo Application for SharePoint on-premise

## Scan Preview

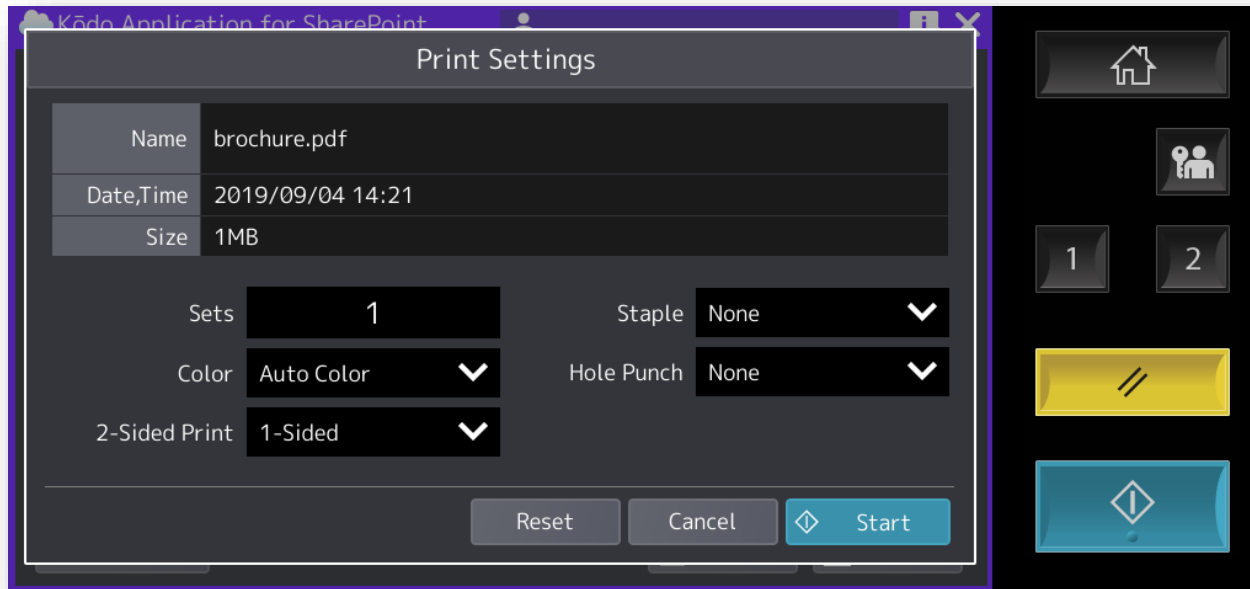
- Scan Preview ensures the integrity of your documents at the point of scan with on-screen verification of page count and thumbnail preview with pinch/zoom and delete.
- In this mode document sources can be any mix between the document feeder or platen glass



# TOSHIBA MFP panel user experience - Kodo Application for SharePoint on-premise

## Print documents

- Print documents directly from your SharePoint site with the following options



<b>File Formats</b>	JPEG, PDF
<b>Sets</b>	1-999
<b>Colour/Toner Mode</b>	Auto Colour, Full Colour, Black, Eraseable Blue
<b>2-Sided</b>	1-2sided, Book, Tablet
<b>Staple</b>	Upper Left, Upper Right
<b>Hole Punch</b>	Middle Left, Centre Top
<i>Note: Print settings available vary according to the MFP model and configuration</i>	