

BERTL

EXCEPTIONAL



Toshiba e-Studio4520c



45-ppm Monochrome; 45-ppm Color

Print • Copy • Scan • Fax



100% INDEPENDENT ANALYSIS

www.bertl.com

Copyright © 2008 BERTL Inc.

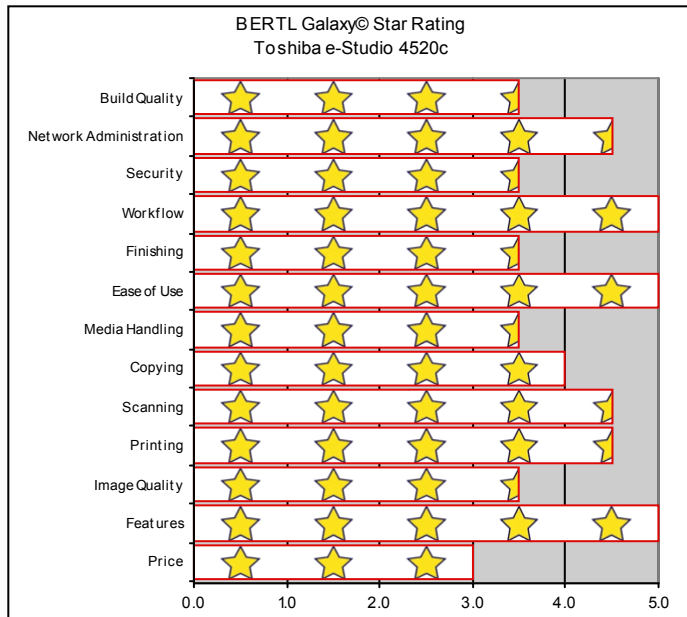
All Rights Reserved. The license under which this document is made available and applicable law prohibit any reproduction or further transmission of any portion of this document. This document may only be viewed electronically through the www.BERTL.com Web site and may not be stored in electronic or hard copy format. Any reproduction of trademarks is strictly prohibited. BERTL accepts no responsibility for any inaccuracies or omissions contained in this document.

August 2008

TABLE OF CONTENTS

BERTL Galaxy® Star Rating	3
About BERTL's Galaxy® Star Rating	3
Introduction	4
Device Features Summary	4
Pricing, Specifications, Features, Software	5
Print	8
Bandwidth	8
Print Productivity	8
What We Liked/Would Like To See	10
Copy	11
Copy Productivity	12
What We Liked/Would Like To See	13
Scan	14
What We Liked/Would Like To See	14
Image Quality	15
Density	15
Resolution	15
Halftones	16
Negative/Positive Lines	16
Negative/Positive Dots	16
What We Liked/Would Like To See	16
Ease of Use	17
Programming the Control Panel	17
Print Drivers	19
Client Utilities	25
Routine Maintenance	27
Device Management	31
What We Liked/Would Like To See	34
Media Handling	35
Media Input	35
Media Output and Finishing	35
Original Handling	36
What We Liked/Would Like to See	36
Summing Up	37
About BERTL	39

OFFICE



ABOUT BERTL'S GALAXY® STAR RATING

BERTL understands how difficult it is to choose one office-imaging device over another and exists to make this an easier choice for the consumer. That said, how does a consumer decide between two or more devices that carry the same BERTL 3-, 4- or 5-star rating?

Category-Criteria

Build Quality - An analysis of the construction quality of the major components that the user must interact with on a regular basis (e.g.: paper trays, access covers, supplies, etc.).

Network Administration - The quality of administrative and management utilities (both executable and Web-based) when compared to that of a sliding scale benchmark based on the network administration feature set of other vendors.

Security - A security feature-set analysis (removable hard disk, hard-disk overwrite, encryption, IP filtering, Microsoft Windows NT Authentication and LDAP lookup) when compared to a sliding scale benchmark based on the security feature set found on other devices.

Workflow - The quality of the network scanning, job submission, document management, sharpening and enhancement, file conversion and job layout tools based on a sliding scale benchmark when compared to the workflow tools employed by other devices.

Finishing - The productivity penalty (punch, staple, booklets) based on tests and finishing specifications and effectiveness based on a sliding scale benchmark when compared to that of other finishing systems found on other devices.

Ease of Use - Ease of maintenance (adding paper, toner, misfeeds, cleaning) and ease of using the documentation, help, control panel, print drivers and client utilities when compared to a sliding scale benchmark based on the ease of use of other devices.

Media Handling - Throughput specifications and evaluations based on a sliding scale benchmark when compared with the handling of special media (e.g.: oversize, thick or coated stock) found on other devices.

Copying - Copy productivity based on tests and a feature-set analysis when compared to a sliding scale benchmark based on the feature set found on other devices.

Scanning - Simplex and duplex scan productivity and quality based on tests and a comparison of the overall scan and send feature set when compared to a sliding scale benchmark based on the feature set found on other devices.

Printing - Duplex and simplex print productivity based on tests and a printing feature set analysis when compared to a sliding scale benchmark based on the feature set found on other devices.

Image Quality - The quality of business color images (text, dot, line, halftone and solid quality) based on tests and a subjective rating on the quality of continuous tones (photos) when compared to a sliding scale benchmark based on the continuous tone quality produced by other devices.

Features - The feature set compared to a sliding scale benchmark based on the feature set found on other devices.

Price - MSRP of a system configured with network printing, copying, scanning, and two media trays/rolls (wide format) configuration.

As part of Toshiba's e-STUDIO 4520c/3530c/2830c family, the e-STUDIO4520C is the high-range unit in this office color MFP large-format family, and is designed for multi-user offices and mid-sized workgroups. Introduced in July 2008, the e-STUDIO4520C series is among Toshiba's newest and fastest products that print, copy, scan and fax while incorporating the company's next generation e-BRIDGE controller which is designed to provide more efficient processing and multi-tasking. The e-STUDIO4520C also offers a new Replaceable Unit design, which is intended to keep maintenance downtime to an absolute minimum.

BERTL recently tested the e-STUDIO4520C which was developed completely in-house by Toshiba with a list price of \$20,999 (as a digital copier/network printer). The e-Studio4520C is the high-end system in the series and is rated at 45 ppm monochrome and 45 ppm color, with a maximum paper capacity of up to 3,700 sheets.

The new Toshiba high-volume color line features a large, adjustable 8.5" Super WVGA touch screen for quick and easy access to copying, printing, scanning, faxing and e-filing features, and a new two-part developer delivery system that automatically replenishes developer into the system as new toner is introduced, eliminating the need to install or maintain developer for the projected life of the MFP.

Toshiba's next generation e-BRIDGE controller offers enhanced document security with its Advanced Encryption Standard (AES) hard disk encryption, IPv6, IPSec, SNMPv3 and 802.1x network authentication, protecting the document workflow all the way to the network. The e-STUDIO4520c series includes Secure PDF, enabling users to password-protect documents when creating scanned PDFs, to prevent unauthorized viewing or printing. In addition, the new color MFP series support printing from and scanning to a USB flash storage drive, and support full-color banner printing of sizes as large as 47 inches wide and 12 feet long.

It's also important to note that while the Toshiba e-STUDIO4520C features standard network printing, it may be equipped with an optional EFI Fiery controller (Fiery Image Controller System 8e). This controller which is suitable for customers with more demanding printing applications, such as graphic-intensive applications will be available early next year.

In the following test report, BERTL takes an in-depth look at the E-Studio 4520C, testing and evaluating its productivity, image quality and ease-of-use.

Toshiba e-Studio4520C Features Summary

List Price	\$20,999
Imaging Technology	Laser, electrostatic
Standard Functions	Digital Copying, Network Printer / Printer
Optional Functions	Network Scanning, LAN Fax
Maximum Monthly Print Volume	70,000 pages
Mono Print Speed	45 ppm
Color Print Speed	45 ppm
Mono First Page Out Time	5.2 sec.
Color First Page Out Time	7.0 sec.
Automatic Duplex	Yes
Network Scanning	Yes
Color Scanning	Yes
NT Authentication	Yes
LDAP Compatibility	Yes
Hard Disk Overwrite	Optional



The Toshiba e-STUDIO4520C as tested by BERTL.

PRICING

Toshiba e-Studio 4520C	
List Price	\$20,999
Print Controller Options	Toshiba (Standard), EFI Controller (Not available at launch)
Network Interface Options	GN-1050 Wireless LAN Adapter, GN-2010 Bluetooth Adapter, GN-3010 Wireless Antenna, GS-1010 Meta Scan Enabler, GP-1080 IPSec Enabler
Media Input Options	Standard: Two Paper Drawers (2 x 550 – 11"x17"); Bypass Tray (100-Sheet – 12"x47"); Optional: KD-1023 - Paper Feed Pedestal (1 x 550-Sheets – 11"x17"); MY-1032 - Cassette Module (1 x 550 Sheet – 11"x17"); KD-1024LT - Large Capacity Feeder (1 x 2,500 Sheet – 8.5"x11"); MR-3018 - RADF (100 Sheets – 8.5"x11")
Finishing Options	MJ-1101 - Multi-Position Finisher (Stationary Tray - (250 Sheets – 8.5"x11"; Tray 1 with 2000 Sheets Stacking Capacity, 50 Sheet Staple Capacity); MJ-1030 - Saddle-Stitch Finisher (Tray 1 with 1000 Sheets Stacking Capacity, Tray 2 with 1000 Sheets Stacking Capacity, 50 Sheet Staple Capacity), 60 pages (15 sheets) Saddle Stitch Booklets; MJ-1031 - Hanging Finisher (Tray 1 with 1000 Sheets Stacking Capacity, 50 Sheet Staple Capacity)
Software Options	TopAccess, e-Bridge Fleet Management System
Print/Copy Management Options	Network Accounting Enablement
Other Options	MJ-6101N - Multi-Position Hole Punch Unit (for MJ-1101), MJ-6004N - Multi-Position Hole Punch Unit (for MJ-1030), KN-4520 - Bridge Kit Required with MJ-1101, MJ-1030, MJ-1031, GA-1211 - EFI Controller (not available at launch), GD-1250 - NA Fax Board, GD-1260 - NA 2nd Line Fax, GN-1050 - Wireless LAN Adapter, GN-2010 - Bluetooth Adapter, GN-3010 - Wireless Antenna, GP-1070 - Data Overwrite Kit, GS-1010 - Meta Scan Enabler, GP-1080 - IPSec Enabler, KP-2004 - HID Card Reader, KP-2005 - Mifare Card Reader, ST-4520 - Plain Stand

SPECIFICATIONS

Print	
Black Print Speed	45 ppm
Color Print Speed	45 ppm
Black First Page Out Time	5.2 sec.
Color First Page Out Time	7.0 sec.
Print Controller	Toshiba, EFI (Optional)
CPU	866 MHz (Shared)
RAM and Hard Drive	1.5 GB (1.0 GB Memory / 512 MB Page Memory Shared), 80+GB hard drive
Operating Platforms	MS Win: 2000, XP, Server XP, Server 2003, Apple Mac OS: 10.1 and higher, UNIX, Linux, SCO, AS400 via iData & Port 9100, SAP R/3
Standard Print Drivers	PCL 6, PostScript 3, and XPS
Optional Print Drivers	Adobe PostScript 3 (With EFI Controller)
Standard Interfaces	10BaseT/100BaseTX Ethernet, 802.11b/g Wireless LAN, USB, Bluetooth

Copy	
Black Copy Speed	45 ppm
Color Copy Speed	45 ppm
Black First Copy Out Time (Platen/DF)	5.2 sec.
Color First Copy Out Time (Platen/DF)	6.8 sec.
Job Build	Yes
Scan Ahead Copy	Yes
Copy Job Programs	Yes
Customizable Menus	No
Max/Min Zoom Ratio	25/400
Cover Insertion	Yes
Sheet Insertion	Yes
Page Stamp Options	Yes

Scan	
Maximum Scan Speed (B/W)	Up to 57 spm
Maximum Scan Speed (Color)	Up to 57 spm
Connectivity Options	LDAP, SMTP, Windows Domain
Scan to e-mail	Yes
Scan to SMB	Yes
Scan to FTP	Yes
Scan to HDD	Yes
Scan to URL	Yes
Scan to Internet Fax	Yes
TWAIN Scanning	Yes
Scan to External Memory Source (Optical Drive/USB/SD card)	Yes
Network Authentication	Yes
LDAP Lookup	Yes
File Formats Supported	TIFF, PDF, Secure PDF, Slim PDF, JPEG, XPS
Encrypted PDF Format	Yes
Ad hoc Subject Line Entry	Yes
Ad hoc Message Line Entry	Yes
Ad hoc File Name Entry	Yes
QWERTY-Style Input Keypad	Yes

Maintenance	
Black Toner Yield*	29,000 pages
Color Toner Yield*	24,000 pages *
Fuser Life	Information Not Published
User Replaceable Drum?	No
User Replaceable Waste Container?	No
User Replaceable Original/Paper Feed Rollers?	No

*Manufacturer's stated yield based on 5% page coverage.

Media Handling: Input/Output	
Standard Media Capacity	1200 sheets: 2 x 550-sheet drawers, 100-sheet bypass tray
Optional Media Supplies	550-Sheets - Paper Feed Pedestal (11"x17"); 550 Sheet - Cassette Module (11"x17");

Media Handling: Input/Output	
	2,500 Sheet - Large Capacity Feeder (8.5"x11"); 100 Sheets - RADF (8.5"x11")
Maximum Media Capacity	3,700 sheets
Maximum Media Size (main trays)	11"x17"
Minimum/Maximum Media Weight (main trays)	Tray 1 - 17 lb. Bond to 140 lb Index (64 - 253 gsm)
Maximum Media Size (bypass)	12"x47"
Minimum/Maximum Media Weight (bypass)	17 lb. Bond - 100 lb. Cover (64 to 270 gsm)
Minimum/Maximum Media Weight (duplex)	Tray 1 - 17 lb. Bond to 140 lb Index (64 - 253 gsm)
Standard Output Tray Capacity	500 sheets

FEATURES

Security	
Hard-Drive Overwrite	Yes
Removable Hard Drive	No
Private Print	Yes
Encrypted Printing	Yes
Secure Fax	Yes
Encrypted PDF Send	Yes
Network Authentication	Yes
LDAP Authentication	Yes
Kerberos Authentication	Yes
SNMP	Yes
IPv6	Yes
SSL/TLS	Yes
IP Filtering	Yes
MAC Filtering	Yes
Other Security Features	Yes*

*Data Overwrite – Overwrites all data on the hard drive after every job up to 5 times exceeding the Department of Defense Standard.

SOFTWARE

Client Software	
Print Drivers	PCL 6, PostScript 3, and XPS
Client Software	TopAccess Internet Service
Desktop Software	Toshiba e-Bridge Device Manager, Toshiba e-Studio File Downloader, Toshiba e-Studio Twain Driver
Other Software	Toshiba e-Studio Remote Scan Driver, Toshiba e-Studio WIA Driver, Toshiba e-Studio N/W-Fax, Toshiba e-Studio AddressBook Viewer

Device-Management Software	
Web-based device monitoring	TopAccess, HP Web Jetadmin Plug-in, Address Book Viewer,
Executable-based device monitoring	No
Group management of network devices	*Yes
Monitor 3rd-party MIB-compliant network devices	Yes
HP Web JetAdmin compatible	Yes
Other Software	Document Management (e-BRIDGE Re-Search, DocRecord, DocuWare, Questys Pro); Document Output Management: (e-BRIDGE Job Build, e-BRIDGE Job Separator, BarCodeJet, DocForm, DocSystem, DocTransform, EFI Balance, EFI Digital StoreFront, ExcelliPrint, Ringdale FollowMe, iDriver, Print Audit, RPM Remote Print Manager, QDirect, WebCRD); Document Capture/Workflow (e-BRIDGE Re-Rite, eCopy, FineReader, FormReader, QDirect.SCAN).

*With e-Bridge Fleet Management System Software.

PRINTING BACKGROUND

Printing passed copying as the primary method of reproducing documents years ago. Today, printing is just as important—if not more important—than copying.

Connectivity

Most devices include Ethernet and USB connectivity out-of-the-box. Some devices also include a parallel interface. In addition, many devices provide a selection of optional connectivity choices such as Wireless 802.11b or g (g is the faster, preferred standard), Bluetooth for cell phone or PDA connectivity, PictBridge photo printing for printing directly from a digital camera, and FireWire for high-speed local connectivity.

Page Description Languages (PDLs)

PCL is the page description language (PDL) provided by most printer and MFP suppliers. Some manufacturers charge for a PostScript upgrade or provide a PostScript Level 3 emulation (clone). Still other manufacturers provide genuine Adobe PostScript Level 3 and bundle in PCL. A few manufacturers also include their own PDL, which are typically loosely based on the Microsoft Windows/GDI printing technology of old. These Windows or GDI drivers often offer significant productivity advantages over traditional PCL and PostScript print drivers, since the bulk of the processing is handled by the more powerful desktop PC, rather than by the less well-equipped printer processor itself.

Network-Bandwidth/Print File Sizes

	Native File Size	PCL	PS
1-page digital photo PDF	4.48 MB	13.0 MB	5.78 MB
4 page Passport Form PDF	0.08 MB	0.27 MB	0.49 MB
16-page Magazine in PDF	1.78 MB	10.8 MB	3.39 MB
22-page Excel Worksheet	0.12 MB	0.25 MB	0.14 MB
32-page Text-Based PowerPoint	0.23 MB	0.27 MB	1.48 MB
32-page Graphic Intensive PowerPoint	4.20 MB	20.1 MB	2.38 MB
38-page Form Word Document	0.91 MB	8.26 MB	1.14 MB
50-page Text-Based PDF	0.17 MB	0.69 MB	1.71 MB

PRODUCTIVITY

Evaluating print productivity is not as simple as timing copy jobs. The printing process involves several steps and can be affected by a variety of factors along the way.

The document must first be spooled by the print driver into a PCL or PostScript file. The PCL or PostScript file is then sent to the printer where it is raster image processed (RIPped) into image data by the device processor. The image data is then sent to the marking engine and output as printed pages.

There are three obvious factors highlighted above (spool time, RIP time, and print engine speed), which can all make or break a device's overall productivity. Other factors include concurrency and contention; for instance, print speed may slow down when the device is being used for other functions, such as scanning.

However, it is possible to time and compare these factors through the use of careful preparation, conditioning and testing. Following are charts that show printing performance when tested under controlled conditions.

First Page Out Time (seconds)

Job List	Media Size	PCL	PS*
1-page photo print	Letter	30.53	26.25
4-page passport form PDF	Letter	17.97	19.97
16-page Magazine PDF	Letter	18.28	20.06
22-page Excel Worksheet	Letter	17.75	17.72
32-page text-based PowerPoint	Letter	16.90	15.28
32-page graphic-intensive PowerPoint	Letter	17.22	19.41
38-page Word form	Letter	14.57	19.59
50-page text-based PDF	Letter	17.82	19.35
50-page text-based PDF (duplex)	Letter	21.57	22.59

* Visual PostScript driver.

Job Time (seconds)				
Job List	Media Size	Mode	PCL	PS
1-page digital photo print original	Letter	1:1	30.53	26.25
4-page passport form PDF	Letter	1:1	23.44	25.41
16-page Magazine PDF	Letter	1:1	48.59	43.94
22-page Excel Worksheet	Letter	1:1	54.28	70.10
32-page text-based PowerPoint	Letter	1:1	60.88	63.53
32-page graphic-intensive PowerPoint	Letter	1:1	107.59	70.75
38-page simplex Word form	Letter	1:1	80.66	80.44
50-page text-based PDF	Letter	1:1	84.16	86.44
50-page duplex text-based Adobe PDF	Letter	1:2	91.85	92.50

Simplex PCL Print Productivity Black-and-White Text (Pages Per Minute)								
SETS								
PAGES	1	3	5	10	20	30	40	50
1	3.4	8.8	12.9	20.0	27.6	31.5	34.0	35.6
2	6.3	14.6	20.0	27.6	34.0	36.8	38.5	39.5
3	8.8	18.8	24.5	31.5	36.8	39.0	40.2	41.0
4	11.0	22.0	27.6	34.0	38.5	40.2	41.2	41.8
5	12.9	24.5	29.8	35.6	39.5	41.0	41.8	42.3
6	14.6	26.4	31.5	36.8	40.2	41.5	42.2	42.6
7	16.2	28.1	32.9	37.8	40.8	41.9	42.5	42.8
8	17.6	29.4	34.0	38.5	41.2	42.2	42.7	43.0
9	18.8	30.6	34.9	39.0	41.5	42.4	42.9	43.2
10	20.0	31.5	35.6	39.5	41.8	42.6	43.0	43.3
20	27.6	36.8	39.5	41.8	43.0	43.4	43.7	43.8
30	31.5	39.0	41.0	42.6	43.4	43.7	43.9	44.0
40	34.0	40.2	41.8	43.0	43.7	43.9	44.0	44.0
50	35.6	41.0	42.3	43.3	43.8	44.0	44.0	44.1

Duplex PCL Print Productivity Black-and-White Text (Pages Per Minute)								
SETS								
PAGES	1	3	5	10	20	30	40	50
1	2.8	7.3	10.9	17.3	24.3	28.1	30.5	32.1
2	5.2	12.5	17.3	24.3	30.5	33.3	35.0	36.0
3	7.3	16.2	21.4	28.1	33.3	35.6	36.8	37.5
4	9.2	19.1	24.3	30.5	35.0	36.8	37.7	38.3
5	10.9	21.4	26.5	32.1	36.0	37.5	38.3	38.8
6	12.5	23.2	28.1	33.3	36.8	38.1	38.8	39.2
7	13.8	24.8	29.4	34.3	37.3	38.5	39.1	39.4
8	15.1	26.1	30.5	35.0	37.7	38.8	39.3	39.6
9	16.2	27.2	31.4	35.6	38.1	39.0	39.5	39.8
10	17.3	28.1	32.1	36.0	38.3	39.2	39.6	39.9
20	24.3	33.3	36.0	38.3	39.6	40.1	40.3	40.4
30	28.1	35.6	37.5	39.2	40.1	40.4	40.5	40.6
40	30.5	36.8	38.3	39.6	40.3	40.5	40.6	40.7
50	32.1	37.5	38.8	39.9	40.4	40.6	40.7	40.8

Simplex PostScript Print Productivity Black-and-White Text (Pages Per Minute)								
SETS								
PAGES	1	3	5	10	20	30	40	50
1	3.1	8.1	12.1	18.9	26.5	30.5	33.0	34.7
2	5.8	13.7	18.9	26.5	33.0	36.0	37.6	38.7
3	8.1	17.8	23.4	30.5	36.0	38.2	39.5	40.3
4	10.2	20.9	26.5	33.0	37.6	39.5	40.5	41.1
5	12.1	23.4	28.7	34.7	38.7	40.3	41.1	41.6
6	13.7	25.3	30.5	36.0	39.5	40.8	41.5	42.0
7	15.2	27.0	31.9	36.9	40.1	41.2	41.9	42.2
8	16.6	28.3	33.0	37.6	40.5	41.5	42.1	42.4
9	17.8	29.5	33.9	38.2	40.8	41.8	42.3	42.6
10	18.9	30.5	34.7	38.7	41.1	42.0	42.4	42.7
20	26.5	36.0	38.7	41.1	42.4	42.9	43.1	43.3
30	30.5	38.2	40.3	42.0	42.9	43.2	43.3	43.4
40	33.0	39.5	41.1	42.4	43.1	43.3	43.5	43.5
50	34.7	40.3	41.6	42.7	43.3	43.4	43.5	43.6

Duplex PostScript Print Productivity Black-and-White Text (Pages Per Minute)								
SETS								
PAGES	1	3	5	10	20	30	40	50
1	2.7	7.1	10.6	16.8	23.9	27.8	30.2	31.9
2	5.0	12.1	16.8	23.9	30.2	33.2	34.9	36.0
3	7.1	15.8	20.9	27.8	33.2	35.5	36.8	37.6
4	8.9	18.6	23.9	30.2	34.9	36.8	37.8	38.4
5	10.6	20.9	26.1	31.9	36.0	37.6	38.4	38.9
6	12.1	22.8	27.8	33.2	36.8	38.1	38.8	39.3
7	13.4	24.4	29.1	34.1	37.3	38.5	39.2	39.6
8	14.6	25.7	30.2	34.9	37.8	38.8	39.4	39.8
9	15.8	26.8	31.2	35.5	38.1	39.1	39.6	39.9
10	16.8	27.8	31.9	36.0	38.4	39.3	39.8	40.0
20	23.9	33.2	36.0	38.4	39.8	40.2	40.5	40.6
30	27.8	35.5	37.6	39.3	40.2	40.5	40.7	40.8
40	30.2	36.8	38.4	39.8	40.5	40.7	40.8	40.9
50	31.9	37.6	38.9	40.0	40.6	40.8	40.9	41.0

Simplex PCL Print Productivity Color Microsoft PowerPoint Presentation (Pages Per Minute)								
SETS								
PAGES	1	3	5	10	20	30	40	50
1	3.5	7.8	10.4	13.8	16.5	17.7	18.3	18.7
2	6.0	11.3	13.8	16.5	18.3	19.0	19.4	19.6
3	7.8	13.3	15.5	17.7	19.0	19.5	19.8	19.9
4	9.2	14.6	16.5	18.3	19.4	19.8	20.0	20.1
5	10.4	15.5	17.2	18.7	19.6	19.9	20.1	20.2
6	11.3	16.2	17.7	19.0	19.8	20.0	20.2	20.3
7	12.1	16.7	18.1	19.2	19.9	20.1	20.2	20.3
8	12.8	17.1	18.3	19.4	20.0	20.2	20.3	20.3
9	13.3	17.4	18.6	19.5	20.0	20.2	20.3	20.4
10	13.8	17.7	18.7	19.6	20.1	20.3	20.3	20.4
20	16.5	19.0	19.6	20.1	20.3	20.4	20.5	20.5
30	17.7	19.5	19.9	20.3	20.4	20.5	20.5	20.5
40	18.3	19.8	20.1	20.3	20.5	20.5	20.5	20.5
50	18.7	19.9	20.2	20.4	20.5	20.5	20.5	20.5

Simplex PostScript Print Productivity Color Microsoft PowerPoint Presentation (Pages Per Minute)								
SETS								
PAGES	1	3	5	10	20	30	40	50
1	3.1	7.9	11.5	17.5	23.6	26.7	28.6	29.8
2	5.7	13.0	17.5	23.6	28.6	30.7	31.9	32.7
3	7.9	16.5	21.1	26.7	30.7	32.4	33.3	33.8
4	9.8	19.1	23.6	28.6	31.9	33.3	34.0	34.4
5	11.5	21.1	25.4	29.8	32.7	33.8	34.4	34.7
6	13.0	22.7	26.7	30.7	33.3	34.2	34.7	35.0
7	14.3	24.0	27.7	31.4	33.7	34.5	34.9	35.2
8	15.5	25.0	28.6	31.9	34.0	34.7	35.1	35.3
9	16.5	25.9	29.3	32.4	34.2	34.8	35.2	35.4
10	17.5	26.7	29.8	32.7	34.4	35.0	35.3	35.5
20	23.6	30.7	32.7	34.4	35.3	35.6	35.8	35.8
30	26.7	32.4	33.8	35.0	35.6	35.8	35.9	36.0
40	28.6	33.3	34.4	35.3	35.8	35.9	36.0	36.0
50	29.8	33.8	34.7	35.5	35.8	36.0	36.0	36.1

WHAT WE LIKED

- Tested black-and-white simplex and duplex network-printer speeds in both PCL and PostScript modes were up to approximately 45 ppm, matching Toshiba's rated print speed of up to 45 ppm.
- Tested color network print speed was up to 20.5 ppm in PCL and 36.1 ppm in PostScript mode.
- Tested network-printer First Page Out Time (FPOT) was as fast as 17.82 seconds in PostScript mode and up to 19.35 seconds in PCL mode.

WHAT WE WOULD LIKE TO SEE

- Overall, BERTL was very satisfied with the E-Studio 4520C's printing capabilities.

COPY BACKGROUND

Nearly all MFPs on the market today provide digital copying, while many desktop printers offer it as an option. Despite the fact that many devices provide a wide range of digital-copying capabilities, from image manipulation to page insertion, most typical copy jobs actually consist of a single set of a simplex document that is five pages or less, with no finishing, and no image-quality manipulation.

Small Simple Jobs

Although most MFPs provide a wide range of copying features, most users are not willing to navigate through countless screen menus in order to get to the point where they can actually press the *Start* key. There are two components of copy-job productivity: 1) user productivity, and 2) device productivity. BERTL encourages enterprises to also consider the impact of *user* productivity, along with device productivity. Device productivity only includes the time it takes from the press of the *Start* key until the final copy exits the device, and does not take into account the time that it takes a user to program and start the copy job. However, the easier the job, the easier it is to program; users will also take less time to program jobs as they acclimate to the controls and/or create job programs. And, of course, some users are more astute and capable than others. Consequently, these uncontrolled factors introduce a high degree of variability. However, of course, a device that takes twice as long to produce the first copy affects the job productivity of each and every user and job.

Large, Complex Jobs

Even with large copy jobs—where it seems engine speed plays the largest role—user productivity should be taken into account. For example, the user is less likely to wait at the copier for larger and more complex jobs. Factors that enhance user productivity include such features as easy job programming; a scan-ahead feature so that users can program and scan jobs while other jobs are printing; fast original scanning so that users can more quickly return to their desks with their originals; the ability to build a job using a mix of different-size originals scanned from both the document feeder and platen; and job notification at the computer desktop when the copy job is completed (thus eliminating the guesswork of when to return to the copier to collect the job).



Above and below: The E-Studio 4520C's platen (above) and document feeder (below), with the document feeder's cover opened in order to expose the feeder's misfeed-access area.



COPIER PRODUCTIVITY

Advertised speeds are always quoted using the simplest route—in-and-out of a device. Of course, users often apply finishing options, incorporate different media sizes and types into the document, print in duplex, and add other elements that can affect speed. In the chart below, BERTL tests how different modes—mixed-size original mode and duplex mode—affect document-feeder productivity.

In order to assess copier productivity, BERTL ran a series of copy jobs in order to determine document-feeder scanning speed, the affect of the first set out on overall engine speed, and whether specific job attributes affect engine throughput capability. Each job was set up by feeding media from the shortest media route to the shortest available output destination. A separate test examines how adding finishing/output destinations affects productivity.

First Copy Out Time*		
	Black-and-White Mode Seconds	Color Mode Seconds
Number of Originals		
1 Simplex Original	14.78	16.55
2 Simplex Original (Duplex Model)	18.20	19.47

*Using the automatic document feeder.

Copy Job Time			
# of originals	MONOCHROME MODE	Time In Seconds	CPM
10	1 sided to 1 sided	26.32	22.8
10	1 sided to 2 sided	35.88	16.7
10	2 sided to 1 sided	62.19	9.6
10	2 sided to 2 sided	64.84	9.3
	COLOR MODE		
10	1 sided to 1 sided	28.31	21.2
10	1 sided to 2 sided	37.40	16.0
	AUTO COLOR MODE		
10	1 sided to 1 sided	27.78	21.6

Simplex Black-and-White Copier Productivity (Pages Per Minute)

SETS								
Pages	1	3	5	10	20	30	40	50
1	4.1	10.4	15.1	22.8	30.7	34.6	37.0	38.7
2	7.5	17.0	22.8	30.7	37.0	39.8	41.4	42.3
3	10.4	21.6	27.5	34.6	39.8	41.9	43.0	43.7
4	12.9	24.9	30.7	37.0	41.4	43.0	43.9	44.5
5	15.1	27.5	32.9	38.7	42.3	43.7	44.5	44.9
6	17.0	29.5	34.6	39.8	43.0	44.2	44.8	45.2
7	18.7	31.2	36.0	40.7	43.5	44.6	45.1	45.4
8	20.2	32.5	37.0	41.4	43.9	44.8	45.3	45.6
9	21.6	33.7	37.9	41.9	44.2	45.0	45.5	45.7
10	22.8	34.6	38.7	42.3	44.5	45.2	45.6	45.8
20	30.7	39.8	42.3	44.5	45.6	46.0	46.2	46.3
30	34.6	41.9	43.7	45.2	46.0	46.3	46.4	46.5
40	37.0	43.0	44.5	45.6	46.2	46.4	46.5	46.5
50	38.7	43.7	44.9	45.8	46.3	46.5	46.5	46.6

Duplex Black-and-White Copier Productivity (Pages Per Minute)

SETS								
Pages	1	3	5	10	20	30	40	50
1	3.3	8.0	11.1	15.8	19.9	21.9	23.0	23.7
2	5.6	12.3	15.8	19.9	23.0	24.2	24.9	25.3
3	7.6	15.1	18.3	21.9	24.2	25.1	25.6	25.9
4	9.2	16.9	19.9	23.0	24.9	25.6	26.0	26.2
5	10.6	18.3	21.1	23.7	25.3	25.9	26.2	26.4
6	11.8	19.4	21.9	24.2	25.6	26.1	26.4	26.5
7	12.9	20.2	22.5	24.6	25.8	26.2	26.5	26.6
8	13.8	20.9	23.0	24.9	26.0	26.4	26.5	26.7
9	14.6	21.4	23.4	25.1	26.1	26.4	26.6	26.7
10	15.3	21.9	23.7	25.3	26.2	26.5	26.7	26.8
20	19.5	24.2	25.3	26.2	26.7	26.8	26.9	27.0
30	21.6	25.1	25.9	26.5	26.8	26.9	27.0	27.0
40	22.7	25.6	26.2	26.7	26.9	27.0	27.0	27.1
50	23.5	25.9	26.4	26.8	27.0	27.0	27.1	27.1

Simplex Color Copier Productivity (Pages Per Minute)								
SETS								
Pages	1	3	5	10	20	30	40	50
1	3.6	9.4	13.8	21.2	29.0	33.1	35.6	37.2
2	6.7	15.6	21.2	29.0	35.6	38.4	40.1	41.1
3	9.4	20.0	25.8	33.1	38.4	40.6	41.8	42.6
4	11.7	23.3	29.0	35.6	40.1	41.8	42.8	43.4
5	13.8	25.8	31.3	37.2	41.1	42.6	43.4	43.9
6	15.6	27.9	33.1	38.4	41.8	43.1	43.8	44.2
7	17.2	29.5	34.4	39.4	42.4	43.5	44.1	44.4
8	18.7	30.9	35.6	40.1	42.8	43.8	44.3	44.6
9	20.0	32.1	36.5	40.6	43.1	44.0	44.5	44.8
10	21.2	33.1	37.2	41.1	43.4	44.2	44.6	44.9
20	29.0	38.4	41.1	43.4	44.6	45.0	45.3	45.4
30	33.1	40.6	42.6	44.2	45.0	45.3	45.5	45.6
40	35.6	41.8	43.4	44.6	45.3	45.5	45.6	45.7
50	37.2	42.6	43.9	44.9	45.4	45.6	45.7	45.7

Duplex Color Copier Productivity (Pages Per Minute)								
SETS								
Pages	1	3	5	10	20	30	40	50
1	3.1	7.5	10.6	15.1	19.3	21.3	22.5	23.2
2	5.5	11.7	15.1	19.3	22.5	23.7	24.4	24.9
3	7.5	14.4	17.7	21.3	23.7	24.7	25.2	25.5
4	9.2	16.3	19.3	22.5	24.4	25.2	25.5	25.8
5	10.6	17.7	20.5	23.2	24.9	25.5	25.8	26.0
6	11.7	18.8	21.3	23.7	25.2	25.7	25.9	26.1
7	12.8	19.6	21.9	24.1	25.4	25.8	26.1	26.2
8	13.7	20.3	22.5	24.4	25.5	25.9	26.1	26.3
9	14.4	20.8	22.9	24.7	25.7	26.0	26.2	26.3
10	15.1	21.3	23.2	24.9	25.8	26.1	26.3	26.4
20	19.3	23.7	24.9	25.8	26.3	26.4	26.5	26.6
30	21.3	24.7	25.5	26.1	26.4	26.5	26.6	26.6
40	22.5	25.2	25.8	26.3	26.5	26.6	26.6	26.7
50	23.2	25.5	26.0	26.4	26.6	26.6	26.7	26.7

Document Feeder Productivity

BERTL also takes the user into account and looks at how document-feeder productivity affects the amount of time a user has to wait at the device before they can walk away with their originals.

Document Feed Speed			
# of originals	MONOCHROME MODE	Time In Seconds	OPM*
10	Simplex Originals	16.72	35.9
5	Duplex Originals	31.94	9.4
10	Mixed-Size Originals	24.53	24.5
COLOR MODE			
10	Simplex Originals	16.97	35.4
5	Duplex Originals	32.06	18.7

*Originals per minute.

Document-Finishing Penalty				
# of originals	Finishing Selection	Time In Secs	1 Set Time (Secs)	Penalty Per Set (Secs)
10/5	Corner Staple	85.69	27.11	-0.95
10/5	Side Staples	91.75	28.32	-0.36
8/5	Saddle-Stitch Booklet	116.81	33.33	0.15
10/5	Covers and Inserts	*	*	*

* Covers and Inserts option could not be evaluated during testing.

WHAT WE LIKED

- Tested black-and-white FPOT as fast as 14.78 seconds in simplex copier mode, and as fast as 18.20 seconds in duplex copier mode.
- Tested black-and-white copier productivity was up to 46.6 ppm in simplex mode and up to 27.1 ppm in duplex mode.
- Tested color copier productivity was up to 45.7 ppm in simplex mode and up to 26.7 ppm in duplex mode.
- Minimal document-finishing penalty when applying document finishing options to copy jobs.
- Fast document-feeder speeds of up to 35.9 opm in monochrome simplex mode and up to 35.4 opm in color simplex mode.
- Users can copy and store files as a digital image via the e-Studio 4520C's standard USB flash memory drive.

WHAT WE WOULD LIKE TO SEE

- While overall, BERTL was very satisfied with the E-Studio 4520C's copying capabilities, we would like to see faster document-feed speeds.

SCANNING BACKGROUND

In just a few years, network scanning has changed from being a "luxury" function to one that is virtually essential.

Indeed, today, nearly all MFPs provide standard or optional network scanning, including scan-to-e-mail. This makes document-feeder design even more critical, with users looking for document feeders with higher feeding speeds, low-resolution capabilities, as well as for MFPs with more versatile scanning, and color-scanning capability.

Address Book Integration

MFPs' ability to integrate their scanning addresses book with central corporate address book located on LDAP or Microsoft Windows NT network servers is the current *de facto* standard. The ability to force-populate outgoing e-mail from the MFP with sender information through an enforced login process is also required (i.e., senders must enter their network password before they can use the MFP's scan-to-e-mail).

Destinations

Most MFPs' network-scanning capabilities include the ability to scan-and-send to e-mail addresses, SMB destinations (Windows desktop locations), FTP (File Transfer Protocol) sites, and Internet fax destinations. In some instances, the scanned document goes directly to the MFP's hard drive, and an e-mail is sent to the recipient with a URL link. By navigating to the URL link, the recipient can quickly access the scanned file from the device's hard drive. Also of note is that a growing number of devices are beginning to include external media ports to allow users to scan and send documents to USB flash memory devices and digital-camera SD chips. We expect this to become more common over the next year.

Security

Security is another critical aspect of scanning. Several MFPs now include the ability to send scanned messages using encrypted PFD or other secure-transfer formats. This is an important capability in industries and sectors where data must be kept secure and confidential. Most devices also support network authentication, so that users must log into their device (usually with their network password) before they scan.

Integration with Third-Party Applications

The big buzz in the office digital-imaging industry is the move toward open architecture, with the MFP's firmware backbone based on an industry standard such as Java or .NET rather than on a proprietary system.

copy job?	
Print slowdown when scanning in scan job?	No
Print slowdown when scan-data transfer underway?	No



Users can scan hard-copy originals, converting them into electronic files, and then send them e-mail addresses or network folders.

WHAT WE LIKED

- Images can be scanned, printed and faxed directly to the device's hard drive and stored in e-Filing boxes. Scanned images stored in the e-Filing boxes can then be printed at any time (print-on-demand) e-mailed, sent via fax, sent via Internet fax, routed to a computer workstation, an FTP or SMB server, etc.
- No print slowdown when scanning in jobs or when scan-date transfer is underway
- Support for several file formats that include TIFF Multi/Single Page, PDF Multi/Single Page, Secure PDF, Slim PDF, JPEG, and XPS Multi/Single Page. Support for additional formats can be expanded up to 17 file formats with e-Bridge Re-Rite.
- LDAP compatibility enables users to access the network address book, making destination-management chores easier for network administrators.
- Once authenticated with the device, users can easily automate routine scan-and-distribute workflows by recalling a set of preferred scan settings saved as a scan template right from the control panel.
- Users can scan hardcopy originals, converting it into electronic format, and then send the files to a USB flash memory device for storage via the device's standard USB flash memory drive.

WHAT WE WOULD LIKE TO SEE

- Overall, BERTL was very satisfied with the E-Studio 4520C's network-scanning capabilities.

Device Contention

Print slowdown when scanning	No
------------------------------	----

IMAGE QUALITY

BERTL evaluates the output of several "test targets" in order to determine image quality. Following are descriptions of key elements of image quality. Note the numbered examples on each of the test targets shown in the right column.

Office Color Image Quality

1. **Density of Solid Areas** - Better contrast; more vivid overall images
2. **Line Work** - Better production of lines and text
3. **Halftones** - Better production of photographic and screened images
4. **Negative/Positive** - Better production of fine detail

Photographic Color Image Quality

5. **Flesh tones** - Better production of portraits
6. **Banding** - Better solid and dithered fill
7. **Low Contrast** - Better production of dark images
8. **Saturation** - Better production of bright colors
9. **Caste** - Better color fidelity
10. **Fine Detail** - Better reproduction of fine details

Density of Solid Areas*		
	Copy Density	Print Density
Black	1.54	1.53
Cyan	1.09	0.90
Magenta	0.91	0.99
Yellow	1.12	1.14

*Density is on a scale of 0 to 2.5, with 2.5 being the best possible.

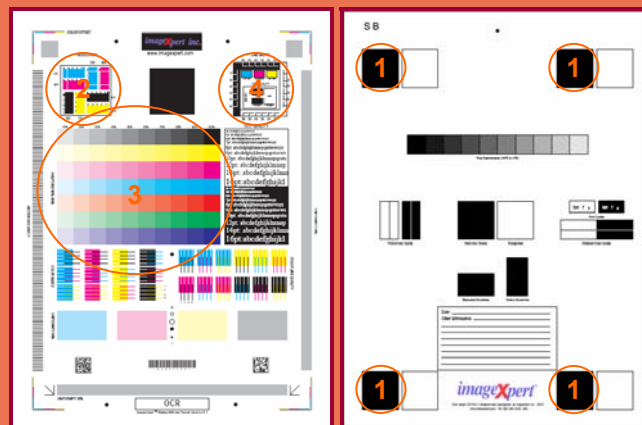
Copy & Print Resolution*				
	Copy Resolution		Print Resolution	
	Vertical	Horizontal	Vertical	Horizontal
Black	4.5	4.0	2	2
Cyan	--	--	2	2
Magenta	--	--	2	2
Yellow	--	--	3	3

*Line Pairs per Millimeter. For copy resolution, higher is better (range, 2.0-8.0); for printer resolution, lower is better (range, 1.0-5.0).

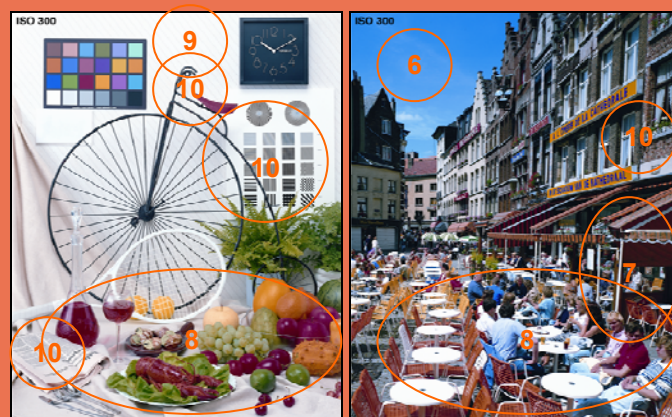
Print Halftones		
	Min. Gradation*	Max. Gradation**
Black	10	100
Cyan	10	70
Magenta	10	80
Yellow	10	100

*Minimum gradation is on a scale of 10 – 100 percent in 10 percent increments. The best possible minimum gradation is 10 percent.

**Maximum gradation is on a scale of 10 – 100 percent in 10 percent increments. The best possible maximum gradation is 100 percent.



BERTL uses ImageExpert printer test targets for the evaluation of printed image quality. BERTL technicians' measure image density and evaluate the device's ability to produce a full range of halftones and various sizes of negative/positive text, dots and lines in each primary printing color (CMYK).



BERTL uses synthetic (photographic) test images obtained from ISO International Standard 12640--Graphic Technology--Prepress digital data exchange--CMYK Standard Color Image Data (CYMK/SCID) in order to evaluate the ability to print photographic images.

IMAGE QUALITY

Copy Halftones		
	Min. Gradation*	Max. Gradation**
Black	20	90
Cyan	10	80
Magenta	20	80
Yellow	10	90

*Minimum gradation is on a scale of 10 – 100 percent in 10 percent increments. The best possible minimum gradation is 10 percent.

**Maximum gradation is on a scale of 10 – 100 percent in 10 percent increments. The best possible maximum gradation is 100 percent.

Negative/Positive Lines*				
Line Width (points)	Negative		Positive	
	Vertical	Horizontal	Vertical	Horizontal
1	√	√	√	√
2	√	√	√	√
3	√	√	√	√
4	√	√	√	√
5	√	√	√	√
6	√	√	√	√

A "√" mark indicates the device was able to print the line width correctly.

*Chart cells containing an "x" indicate that the printer was not able to print the line width correctly. Overall, the fewer "x's," the better the image quality. If no cells are marked with an "x," then the device was able to print all line widths correctly.

Negative/Positive Dots*	
Line Width (points)	% of Dots Printed
1 pixel Black	100
1 pixel Black Neg	100
1 pixel Cyan	100
1 pixel Magenta	100
1 pixel Yellow	100
2x2 pixel Black	100
2x2 pixel Black Neg	100
Checkerboard apparent?	No

*On a scale of 0 – 100%. The higher the percentage, the better.

Photo Quality

	Ranking (1-5)*
Fleshtones	4.0
Banding	3.5
Low Contrast	3.5
Saturation	4.0
Caste	3.5
Fine Detail	4.0

*Based on a scale of 1 – 5, with 5 being the best.

WHAT WE LIKED

- Very good print and copy density in all four colors.
- Good resolution in both copy and printer modes.
- Very good halftone reproduction in printer mode when printing all four colors (black, cyan, yellow and magenta).
- Good halftone reproduction in copier mode when printing all four colors.
- The device displayed very good line control and above-average dot control
- Very good production of photographic images.

WHAT WE WOULD LIKE TO SEE

- Overall, BERTL was satisfied with the E-Studio 4520C's image quality.

PROGRAMMING THE CONTROL PANEL

Visit a few MFP manufacturers' showrooms, and you will see a wide range of control panels and touch screens. The most rudimentary consist of a selection of hard keys and an LCD screen that can often be challenging to navigate. On the other hand, some control panels that utilize hard keys and LCD screens can actually be easier to use than touch screens. However, hard-key/LCD panel systems that require users to scroll through various settings and make a selection can also often be challenging to use.

Among touch screens, some utilize a menu-driven system, while others utilize an icon-based system. Some menu-driven touch screens can involve many complicated sub-menus that can be difficult to navigate.

Most manufacturers try to keep their control panels and touch screens consistent across their MFPs and printers, so that users do not have to spend time learning how to use a new control panel when moving from device to device.

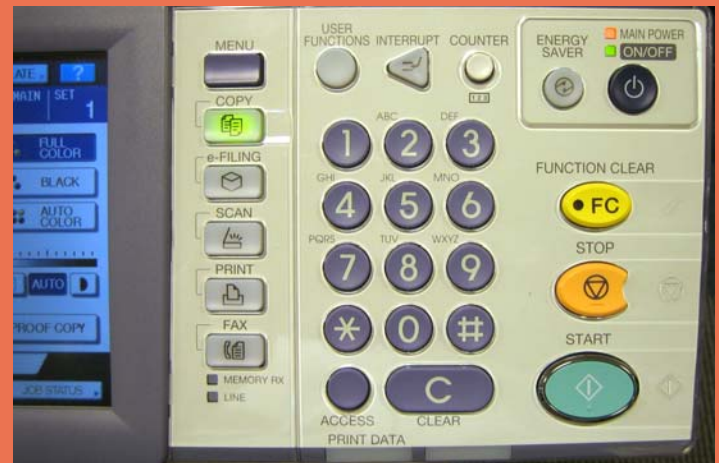
A control panel's ease of use—or lack of—can often have a significant affect on user productivity. The harder it is to select frequently used options such as duplexing, document finishing, etc., the more time the user has to spend programming the device and the less productive they are. In the chart to the right, BERTL assesses how many steps are required to make these commonplace settings.

**Selections Required for
Frequently Used Copy Functions**

Corner Staple	3
1:2	2
2:2	3
Photo Mode	2
Copied Front and Rear Covers	6



The Control Panel can be tilted in order to eliminate any glare, as well as to make it easier for wheelchair users to view and operate.



The right side of the control panel contains various hard keys, including keys for "Function Clear", "Stop", "Start," etc. as well as a numerical keypad for entering number of copies and fax numbers, keys for switching between different functions (copy, e-filing, scan, print, fax, etc.), and hard keys for displaying job status and machine status.

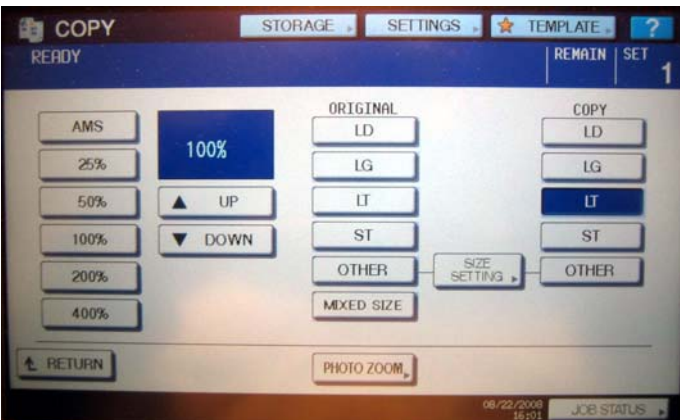


The E-Studio 4520C's Control Panel consists of a touch screen and hard keys.

To access the different device options, the user must first select the corresponding hard key on the control panel.



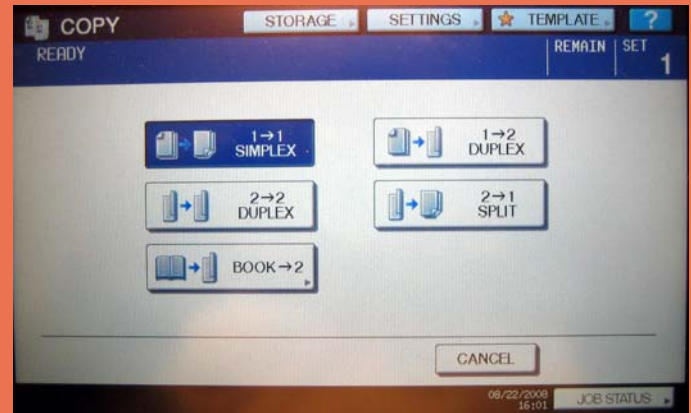
The touch screen's main copy menu provides users with the most common copying choices. The text with the blue background on the touch screen display currently selected settings.



The touch screen displaying several zoom options along with original and copy size options.



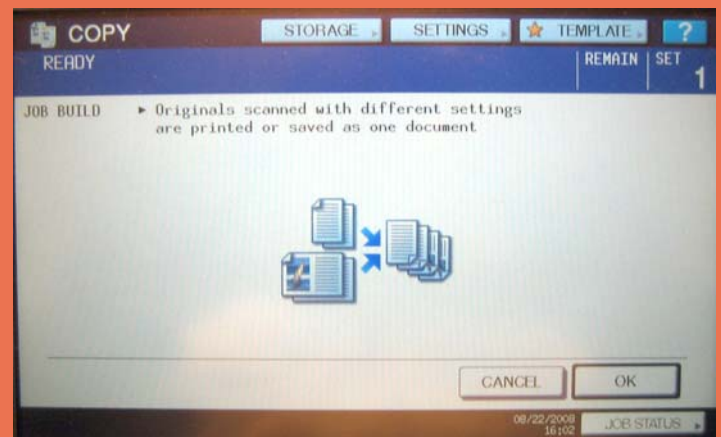
Users can choose several different Output Formats for their copy jobs from this touch screen. Options include Booklet Creation, Covers, Transparency Options, Page Layout, Posters and Annotations.



The 2-Sided tab provides options for simplex, duplex, book, 1 to 2 Duplex, and 2 to 1 Split.



The touch screen displaying various image-quality options for the copy function.



The touch screen's Job Build options provide users with the ability to scan several originals whose settings are individually different and then copy or store them as a single document.



Above and Below: The touch screen's Edit tab provides the user with a multitude of image editing options.



The touch screen displaying several image-quality options for the copy function.

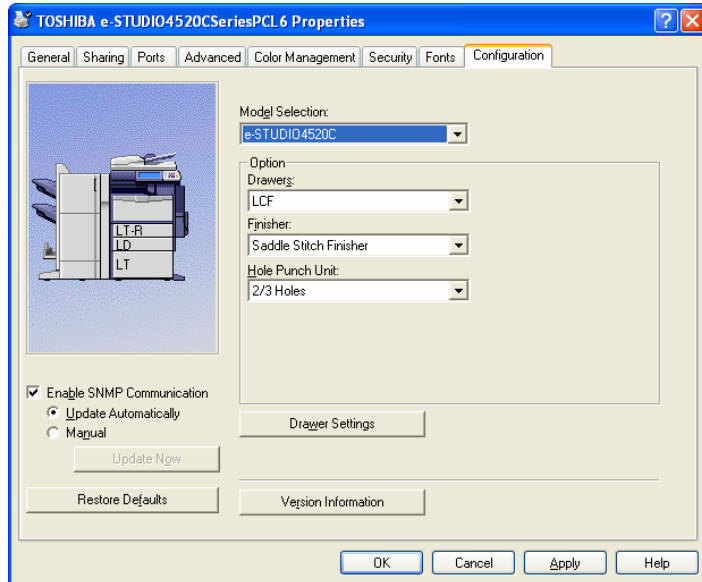
PCL AND POSTSCRIPT DRIVERS

As with control panels and touch screens, print-driver design can vary enormously from manufacturer-to-manufacturer. And, as with control panels and touch screens, how easy it is—or isn't—to make selections in the print driver and navigate through it can significantly affect user productivity.

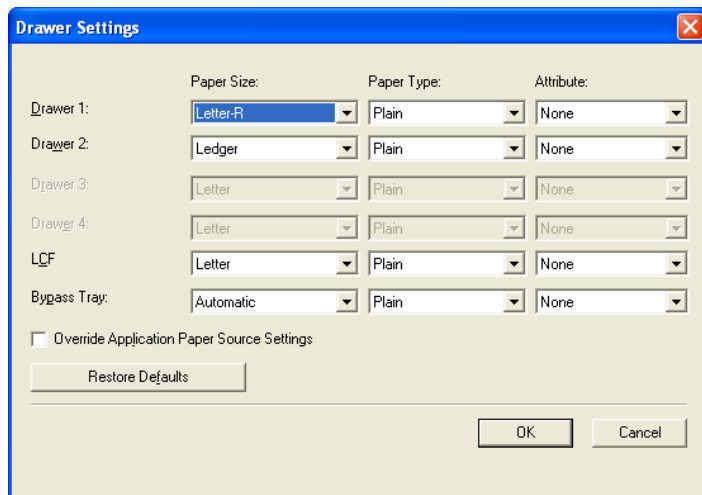
Most vendors provide an emulation of PCL (printer control language) developed by the Hewlett-Packard Company. Some may also provide an emulation of PostScript, developed by Adobe Systems Incorporated, or they may license PostScript directly from Adobe. While the Adobe PostScript driver is not the most user-friendly of print drivers, the advantage is that many users are already familiar with it. Alternately, some manufacturers may use an emulation of PostScript and design their own print-driver user interface, or may license PostScript from Adobe and also design their own print-driver interface.

Print-Driver Checklist	
Do print drivers have identical user interfaces?	Yes
Are print drivers interfaces identical to other vendor models?	Yes
Bidirectional communication within print drivers?	Yes
Auto device configuration from within print driver?	Yes
Does print-driver installation require rebooting of the workstation?	No
Are print-driver deployment processes included?	Yes
Are print-driver deployment guidelines and procedures included?	Yes

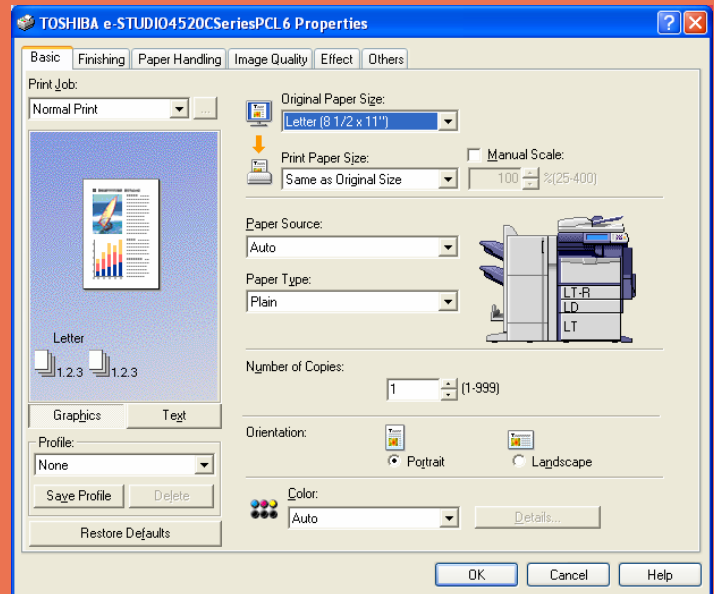
PCL PRINT DRIVER



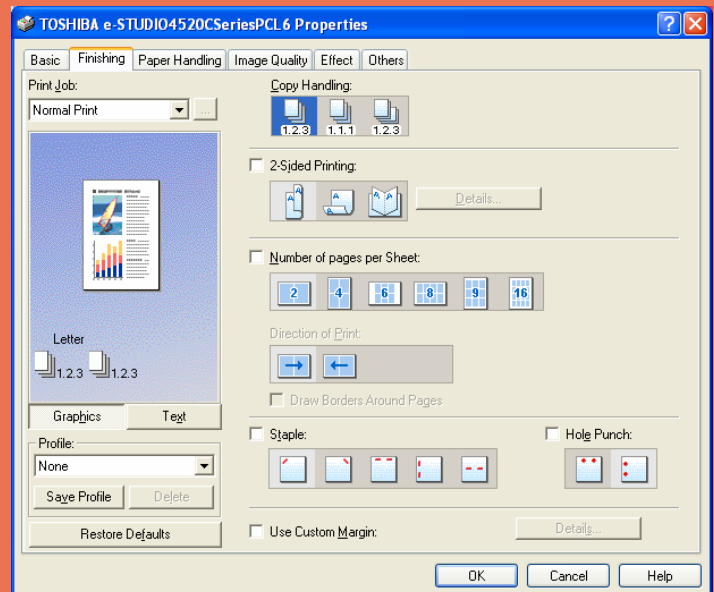
In order to specify which options have been installed, as well as specify system defaults, administrators first access the "Printers and Faxes" folder via the Microsoft Windows' Start menu, and then select the E-Studio 4520C's PCL driver. Administrators can "manually" specify which options are installed, or they may simply enable "SNMP Communication" between the device, and the driver automatically indicating the options shown above are available for use.



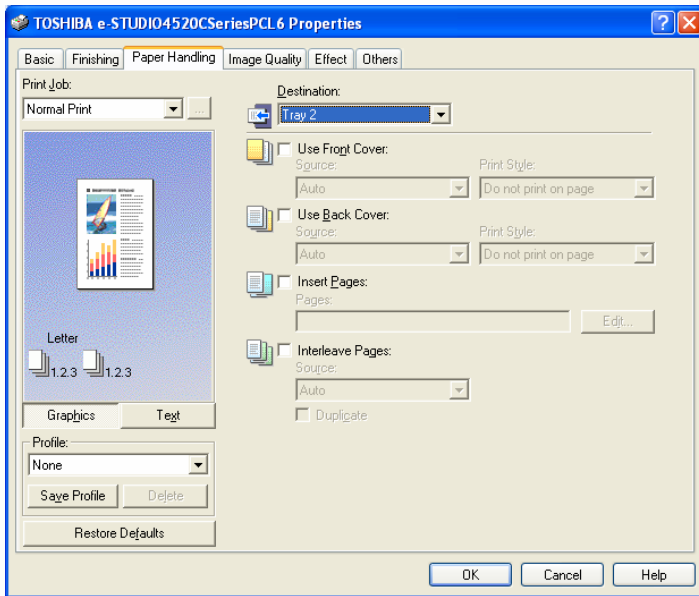
The Drawer Setting button allows users to modify the paper drawer's paper size, paper type, and attribute (Cover, Sheet 1, Sheet 2, Fax, etc.) directly from the print driver.



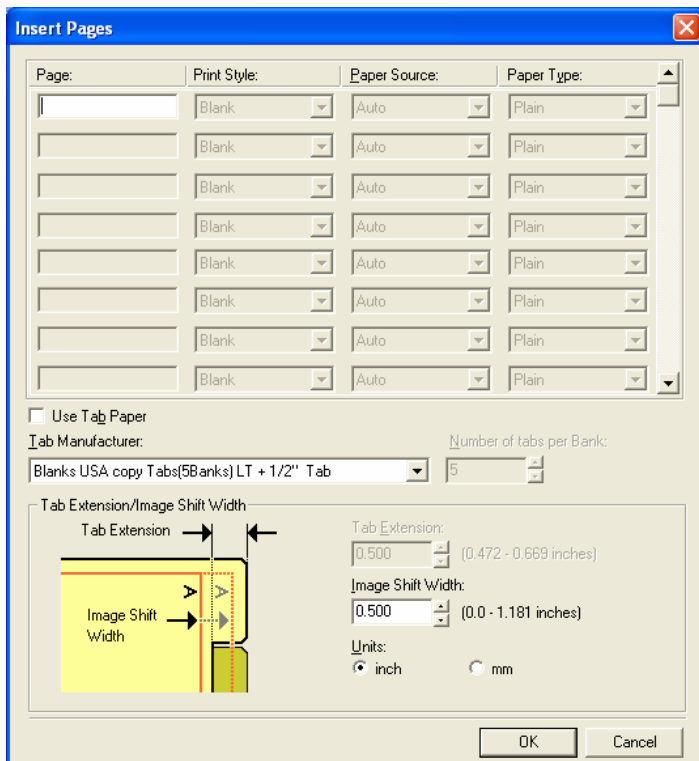
The PCL driver's first tab, Basic, contains basic print operation settings, such as original paper size, print paper size, paper source, paper type, orientation, and number of copies. The image on the left side indicates the currently selected options.



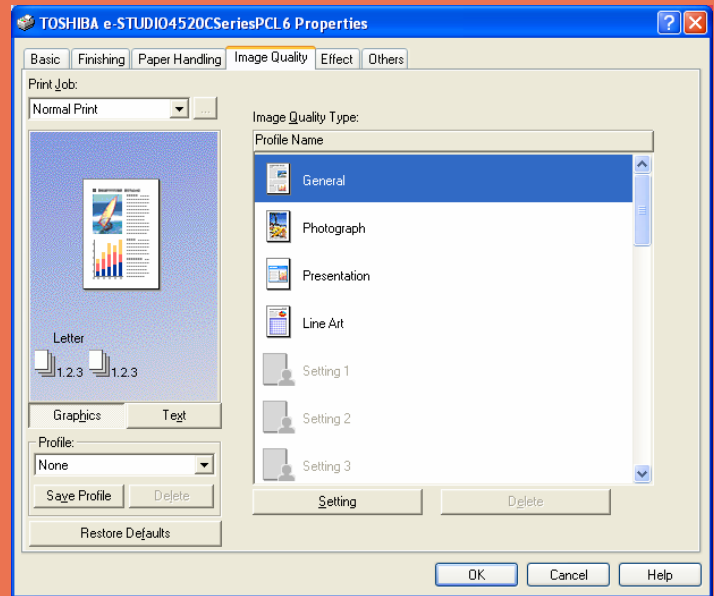
The PCL driver's Finishing tab allows you to enable sort printing, 2-sided printing, N-up printing, stapling and punching.



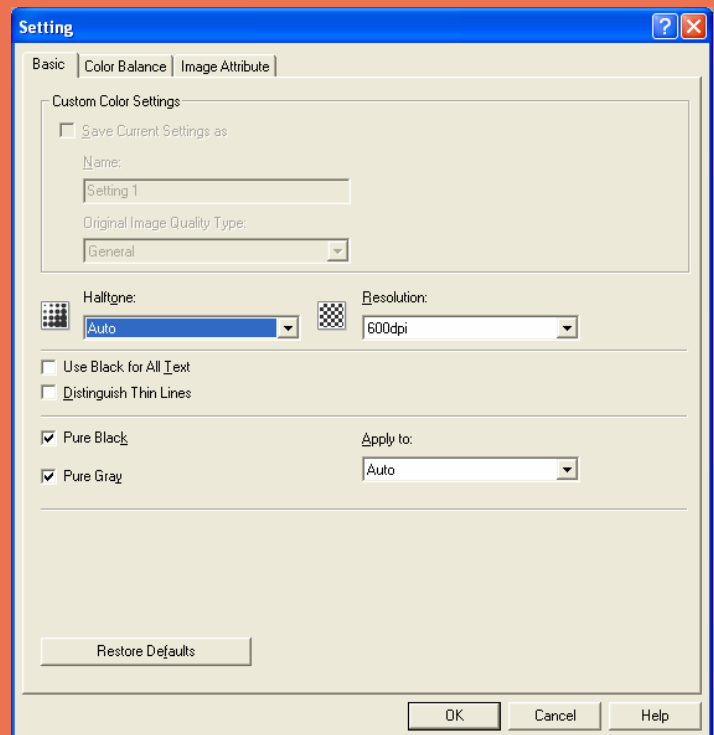
The Paper Handling tab on the 4520C provides several options to enable Front Cover printing, Back Cover printing, Inserting Pages, and Interleaving Pages.



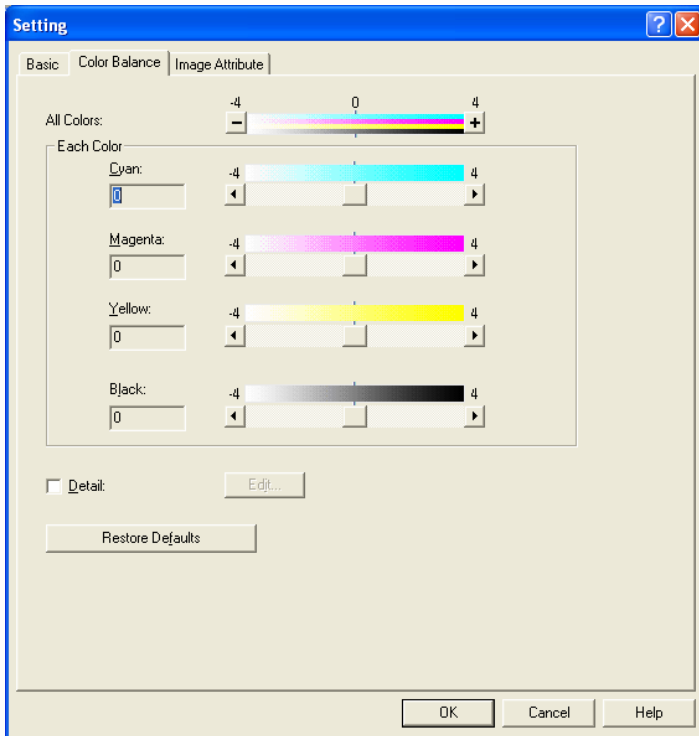
The Insert Pages option allows users to insert a sheet between pages, or print a specific page on a sheet fed from a tray other than the Paper Source option selected on the Basic tab. This option is useful when inserting blank sheets between chapters, or when printing chapter cover pages on the different paper.



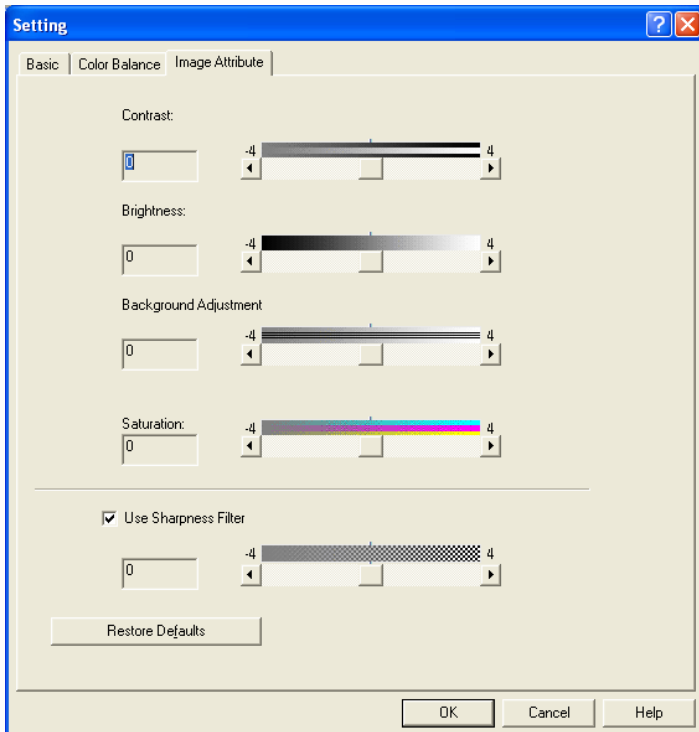
The PCL drivers Image Quality Tab allows users to select how images are printed. Users can easily select the appropriate image quality depending on the type of document being printed out.



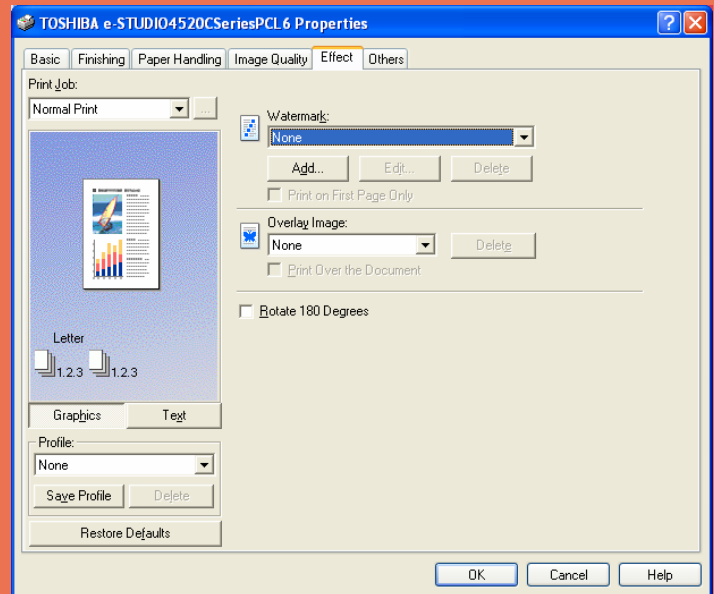
In the Basic Tab of the Setting dialog box, you can specify the following functions; Custom Color Settings, Halftones, Resolution, Use Black for All Text, Distinguish Thin Lines, Pure Black, and Pure Gray.



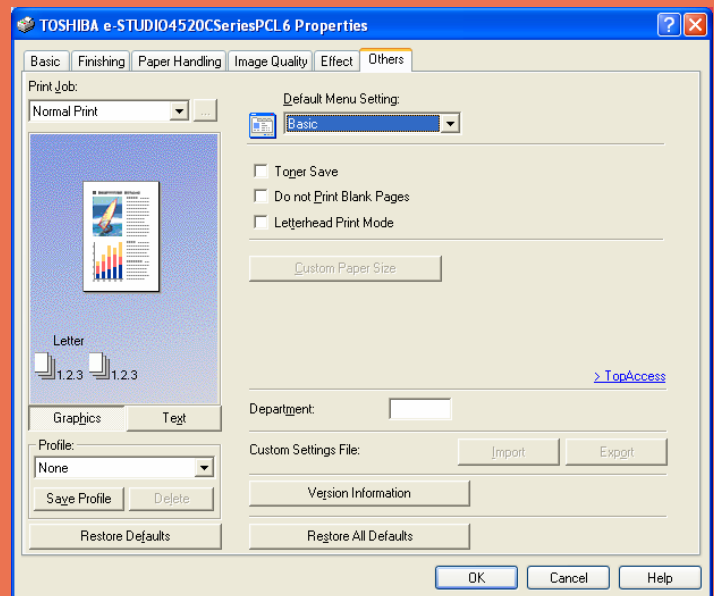
In the Color Balance tab of the Setting dialog box, users can specify the following functions; All Colors, Each Color, and Detail. These options are all used to adjust the density of colors.



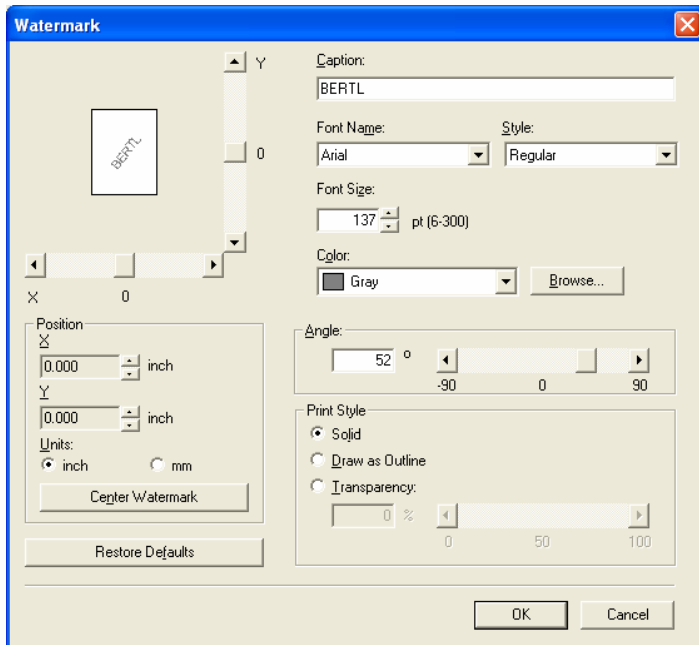
In the Image Attribute tab of the Setting dialog box, users can specify the following functions; Adjust the density level by moving the scroll bar, pressing buttons on the right and left of the scroll bar, or keying in the desired density value directly.



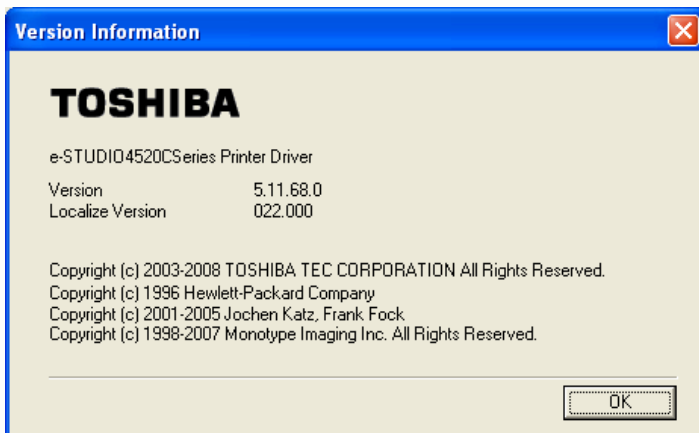
The Effect Tab contains print options that add effects to your print jobs such as Watermarks, Overlay Image printing, and Rotate printing.



The PCL drivers' Others tab contains print options such as Toner Saving, Do not Print Blank Pages, Letterhead Print Mode and custom paper sizes.

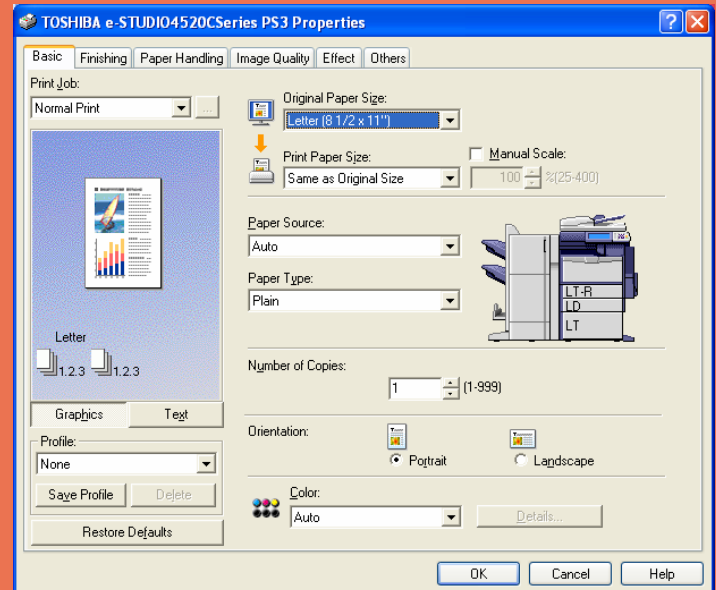


Users can also add, edit or adjust watermark selections.

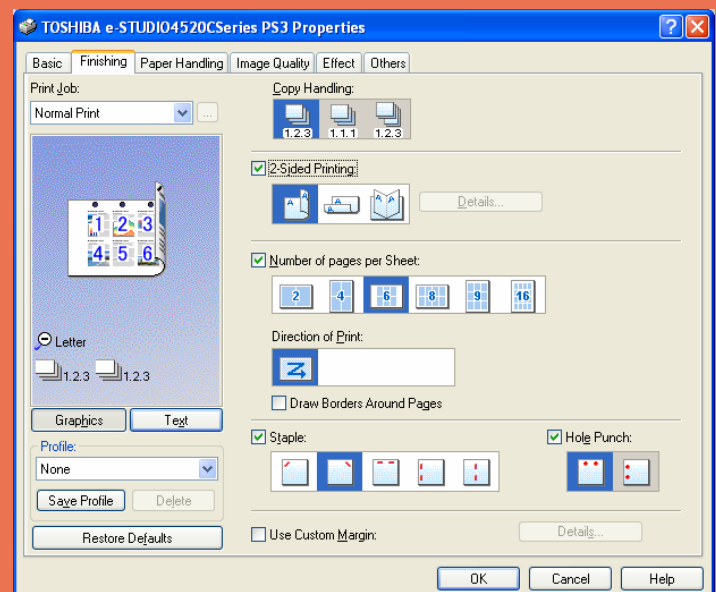


This tab provides print-driver version information.

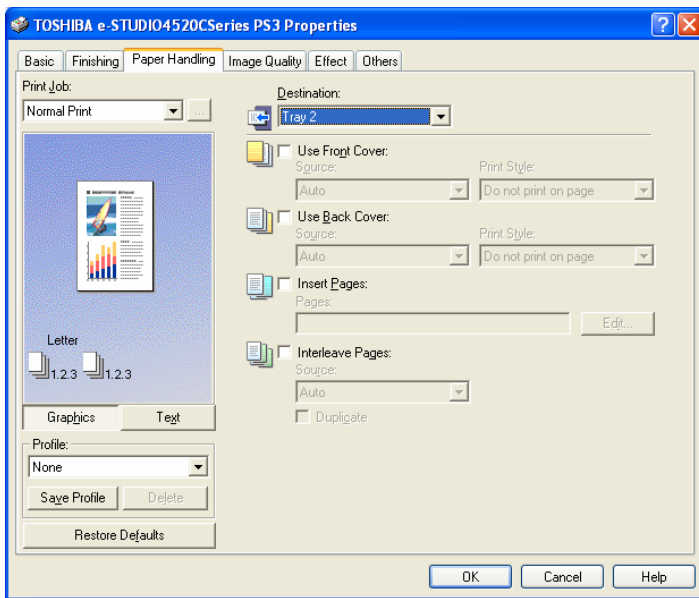
POSTSCRIPT PRINT DRIVER



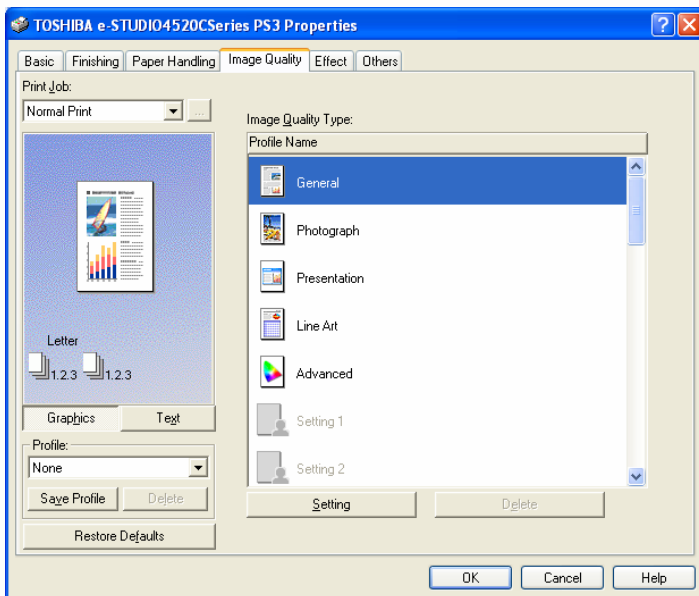
The E-Studio 4520C's PCL and PostScript drivers have very similar user interfaces. The PostScript driver's Basic tab provides the same basic options as the PCL driver's Basic tab. Note that the Profile dropdown list on the bottom left side provides several pre-configured options whereby users can select specifically configured settings for a particular job. Some of the options include Color Booklet, Duplex and Staple, Duplex, and Staple and Punch.



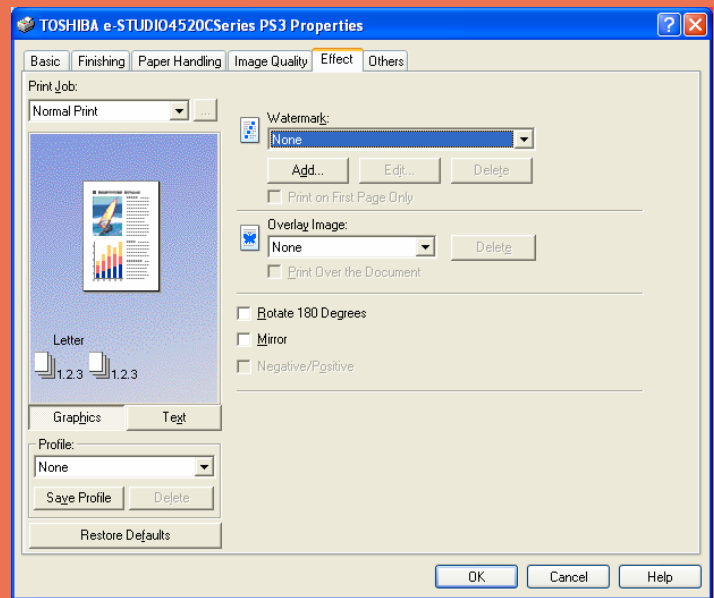
The Post Script driver's Finishing tab allows you to enable sort printing, 2-sided printing, N-up printing, stapling and punching. The options selected by the user are highlighted in blue and the image on the left displays a graphic representation of the chosen options.



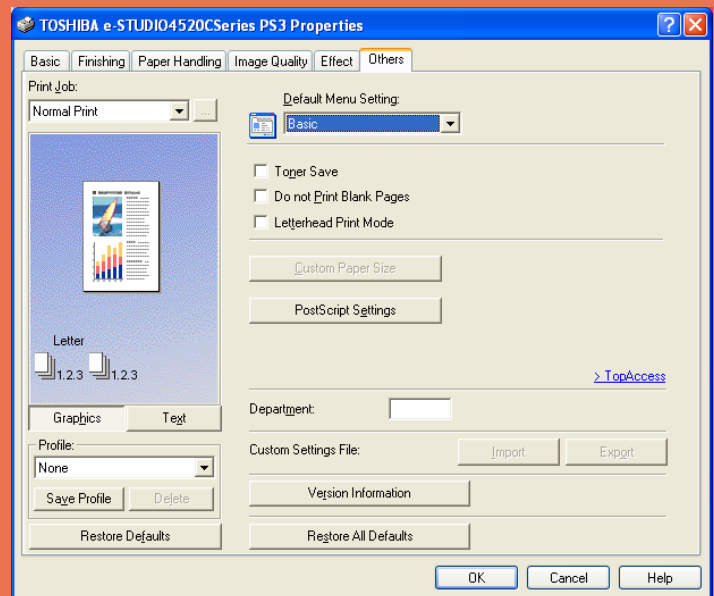
The PostScript drivers Paper Handling tab provides several options to enable Front Cover printing, Back Cover printing, Inserting Pages, and Interleaving Pages.



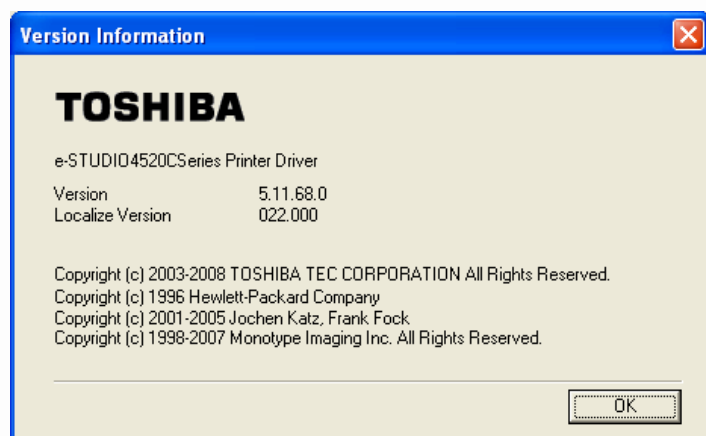
The PostScript driver's Image Quality tab allows users to select how images are printed. Users can easily select the appropriate image quality depending on the type of document being printed out.



The PostScript driver's Effect Tab contains print options that add effects to your print jobs such as Watermarks, Overlay Image printing, Rotate printing, Mirror Printing, and Negative Printing.



The PostScript drivers' Others tab contains print options such as Toner Saving, Do not Print Blank Pages, Letterhead Print Mode and custom paper sizes.



This tab provides PostScript print-driver version information.

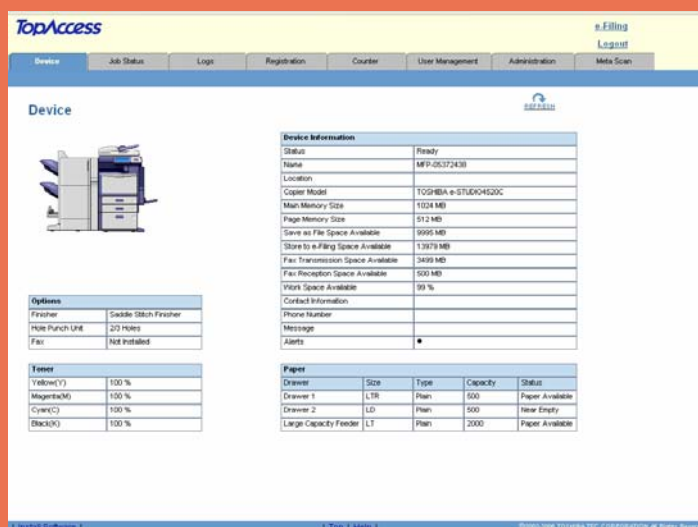
CLIENT UTILITIES

In order to take the best and most efficient advantage of a device and its capabilities, as well as ensure maximum uptime, clients need an efficient way to access and monitor the device. This is true whether the device is an MFP, printer, or scanner.

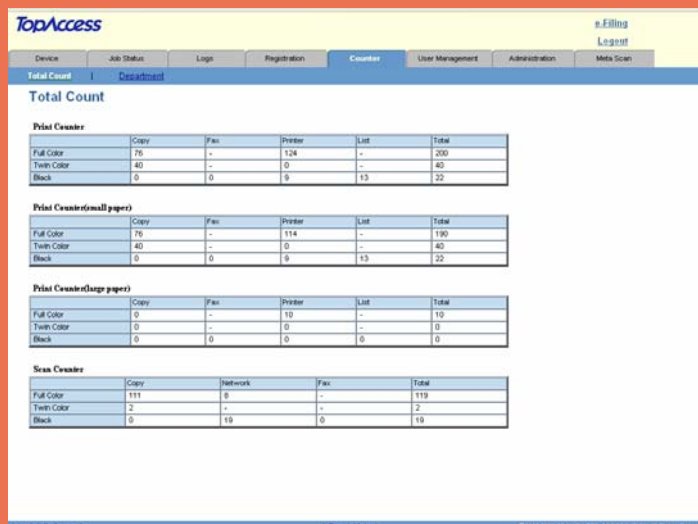
Most general users want to know first if a device is capable of handling a particular job—for instance, if it has duplexing, color capability; supports specific media sizes, or provides certain document finishing, such as stapling or saddle-stitch booklet making.

Second, users want to know a device's current status—if it is ready to print or is offline, for instance. Third, they may also wish to know whether it is equipped with sufficient supplies, such as ink and media, to be able to produce their job. Fourth, when the device is shared, they may wish to know how many other jobs may be lined up ahead of them.

Manufacturers typically provide the user with this information either via a client software utility that is installed on the client's workstation, or via a printer Web page that is accessed via the Web and a Web browser. Some manufacturers may also provide software that automatically indicates (via a pop-up window) when the user's job is completed or if there is a problem with the device, such as depleted media.



Users and administrators can view device settings and manage jobs using Toshiba's Web-based TopAccess management system. TopAccess provides a quick view of current device status, toner levels, installed paper sizes and media tray conditions and availability.



TopAccess Internet Services provides detailed billing information and total impression counts.

User Name	Document Name	Date/Time	Type	Pages	Page	Size
Hugo	Test Page	00/02/2008 10:33:48	Print	LT	1	1
Hugo	Test Page	00/02/2008 10:33:35	Print	LT	1	1
Hugo	REPORT	00/02/2008 10:35:49	Print	LT	1	1
Mike Gehring	FW: fsl	00/02/2008 07:04:39	Print	LT	1	1
Mike Gehring	https://www.della.com/doc/serve	00/02/2008 05:54:24 PM	Print	LT	1	1
Mike Gehring	https://www.della.com/doc/serve	00/02/2008 14:03:02	Print	LT	1	1
Mike Gehring	https://www.della.com/doc/serve	00/02/2008 12:31:29	Print	LT	2	1
COPIV		00/02/2008 12:16:19	Copy	LTR	1	1
COPIV		00/02/2008 12:16:29	Copy	LTR	1	1
Blue Chair - Brick Vial.JPG	Blue Chair - Brick Vial.JPG	00/02/2008 12:13:08	Copy	LTR	1	1
Blue Chair - Brick Vial.JPG	Blue Chair - Brick Vial.JPG	00/02/2008 12:12:21	Print	LT	1	1
mg.pdf	mg.pdf	00/02/2008 12:11:24	Print	LT	1	1
COPIV		00/02/2008 10:43:06	Copy	LT	12	1
COPIV		00/02/2008 10:39:09	Copy	LTR	12	1
TABLE	Microsoft Word - 4520c lockout.f	00/02/2008 10:32:04	Print	LT	1	1
Mike Gehring	BTA East Event Room Black Class	00/02/2008 09:25:43	Print	LT	1	1
COPIV		00/02/2008 09:21:46	Copy	LT	3	1
LIST		00/01/2008 15:21:02			1	1
Mike Gehring	Full page photo print	00/01/2008 14:49:53	Print	LT	1	1
Mike Gehring	Full page photo print	00/01/2008 14:47:18	Print	LT	1	1
Mike Gehring	Full page photo print	00/01/2008 14:43:02	Print	LT	1	1
Mike Gehring	Full page photo print	00/01/2008 14:39:31	Print	LT	5	1
COPIV - A21		00/01/2008 14:08:26	Copy	LTR	16	1
COPIV		00/01/2008 14:04:59	Copy	LTR	8	1
TABLE	Full page photo print	00/01/2008 13:41:22	Print	LT	3	1
COPIV		00/01/2008 13:38:48	Copy	LT	1	1
COPIV		00/01/2008 13:36:05	Copy	LT	1	1
COPIV		00/01/2008 13:35:29	Copy	LT	0	1
TABLE	Full page photo print	00/01/2008 13:34:36	Print	LT	4	1

With TopAccess administrators can display logs of print jobs, fax transmissions, and Scan Job Logs performed on the 4520C. The log can be exported to the desktop for further evaluation by Excel or other cost accounting applications.

No.	Name	User Name
001	Utah Template	

Jump to	1-6	7-12
1-6	1:12 1:18 1:24 1:30 1:36 1:42 1:48 1:54 2:00	

Templates 1-6	Templates 7-12
1. 2x1 S-S	7. ACS APS
2. ACS	8. Mixed Org
3. Stuf S Text	9. Stuf S TAP
4. Color sPDF	10. BN 400 PDF
5. Dual	
6. ACS TAP S-S	
	11. Twin Color
	12. Black & Red
	13. Stuf S Text
	14. ACS 300

With TopAccess, users can easily set up job scan templates from the desktop. These templates will translate to a one-touch scan button on the unit's control panel. Instructions walk users through the process. Even multi-step functions were relatively simple to follow without a manual or online help. Templates can be stored in a public or private folder. Each user can have a private folder locked with a PIN so they can store scan to e-mail, fax, or folder templates in their own folder for fast retrieval rather than filtering through the shared address book.

No.	Name	Email Address	Fax Number
1	Mike Pengaro	mike.pengaro@hbs.toshiba.com	

Above and below: Users have the ability to log on to the TopAccess Internet Services, register a new contact, and enter their e-mail address, fax number, company name, and department code directly from the web interface. Once created, users can easily lookup and select the contact from the address book so they can conveniently send a fax, e-mail or a scan.

Contact Property	
*First Name	Mike
*Last Name	Pengaro
*Email Address	mike.pengaro@hbs.toshiba.com
*Fax Number	
2nd Fax Number	
Company	
Department	
Keyword	

Users can log on to the TopAccess Internet Services Scan to Mailbox interface and download the stored scan jobs right to their desktop. Users must select the template that contains the destination and other required settings from the template list found on the control panel. Once the job is scanned, users will be able to access the electronic version of the document at their workstations.

ROUTINE MAINTENANCE

Workgroup devices sold through retail and traditional IT distribution outlets usually are maintained by office workers who change the all-in-one cartridge units that encase the entire imaging system, including the toner cartridge (or the ink cartridges employed by ink-jet imaging systems). Units sold through resellers and dealers are usually maintained by office workers and/or trained service engineers. While separate long-life parts are more complex to install (i.e., separate toner cartridges, imaging drums, transfer belts), they tend to cost less than low- yield, all-in-one alternatives.

Toner or Ink Replacement

Changing the toner, imaging cartridge or ink cartridge is a necessary task that is traditionally avoided by some for fear of toner dust or ink leaking on clothing or hands, or the fear that it might be too complicated. However, most units today offer clean replacement of toner or ink supplies, and there is very little risk of toner or ink leakage. Usually the replacement process is typically easy.

Clearing Media Misfeeds

The main issue that office users attempt to avoid is the removal of an occasional media misfeed. As a general rule, the faster a device engine, and the more media handling and finishing options it has, the more complex is the process of removing media misfeeds.

Common media-misfeed sources involve the duplex unit and poor loading of media supplies. The position of the duplex unit may be a major factor in the removal of many media misfeeds. How easy or difficult it is to load media supplies can also be a factor in the overall number of misfeeds that may occur.

Loading Media

It goes without saying that loading media should be as easy as possible, but sometimes that is not the case. Among the factors that affect ease-of-use are:

- The user should be able to load an entire ream (500 sheets) in a single step.
- Mechanisms such as corner separators and ramps in the media drawer can impede loading media.

The most critical factor involved in ease-of-loading media is automatic media-size detection. Ultimately, the device should be able to recognize the new media size and reflect it on its control panel/touch screen and across the network in print drivers and printer-management software. Without automatic media-size detection, users must remember to program-in the new media size—something they often neglect to do, or do incorrectly. This can result in jobs printed on the wrong media size, backed-up job logs, etc.

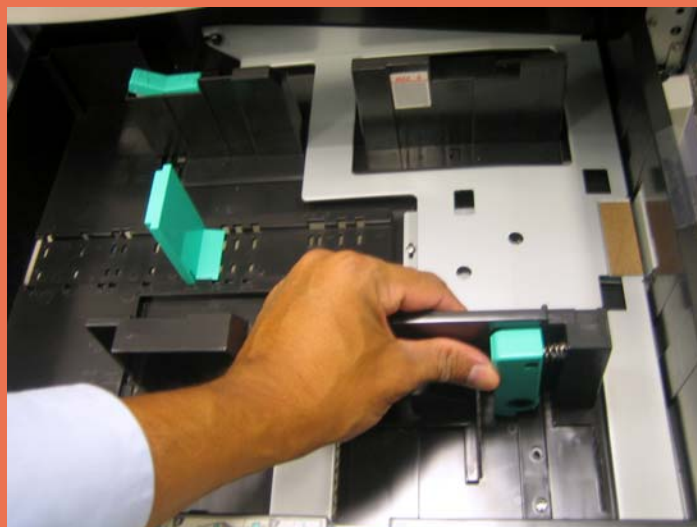
LOADING MEDIA

Paper Loading Checklist

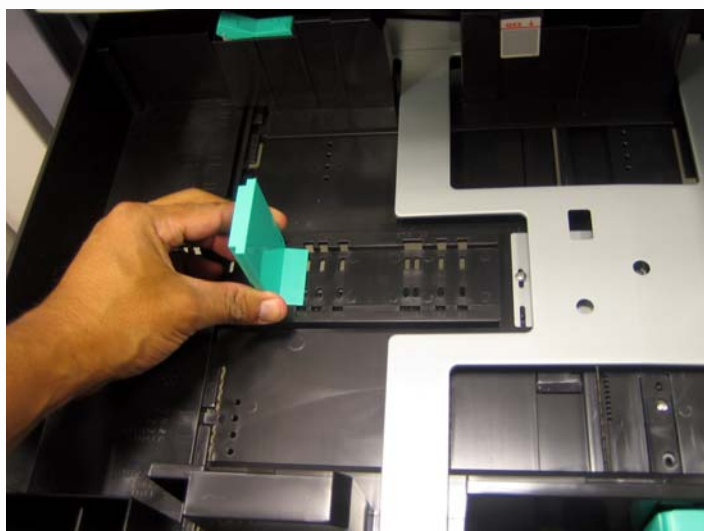
Maximum media weight from all media sources?	No
Drop-in loading of a full ream of paper?	Yes
Corner separators in paper trays?	No
Spring-loaded ramps in paper trays?	No
Geared media size side guides?	No
Captured rear media guide?	Yes
Automatic paper size detection?	No



Both tray 1 and tray 2 can each hold 550 sheets of 20 lb. Bond /80 gsm or 500 sheets (105 gsm or 28 lbs bond media (in from 5.5"x8.5"/A5-R up to 11"x17"/A3).



In order to adjust the paper drawers, the user must unlock the drawer by squeezing the lock on the top left. Once unlocked, the user squeezes the green lever on the bottom right and then slides the guide into place.



This paper tray is equipped with an end stop that the user must remove by squeezing the sides in order to adjust the paper drawer to accommodate the desired paper size. Overall, BERTL found adding paper and adjusting paper drawers to be relatively easy.



The Large Capacity tray can hold up to 2,500 sheets (89 gsm or 20 lb. Bond) or 2000 sheets (90 gsm or 28 lb. Bond) from 8.5"x11" up to 11"x17" paper.

ROUTINE MAINTENANCE-REPLACING TONER

Maintenance Checklist

Load ink/toner while running?	No
Requires rear access for access to maintenance items?	No
Requires side access for access to maintenance items?	Yes
All-in-one imaging units?	No
User-disposable waste item(s)?	No



BERTL Analyst found replacing the E-Studio 4520C's toner cartridge to be easy.

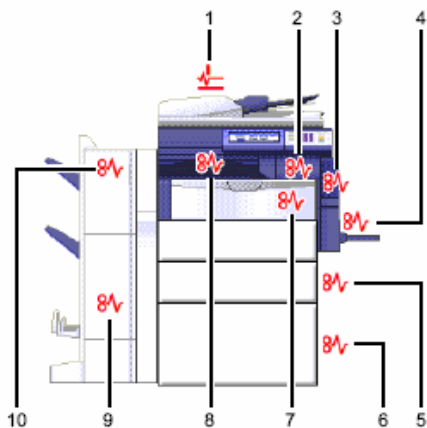


The user must first open the front cover of the machine and then lowers the door as shown above.

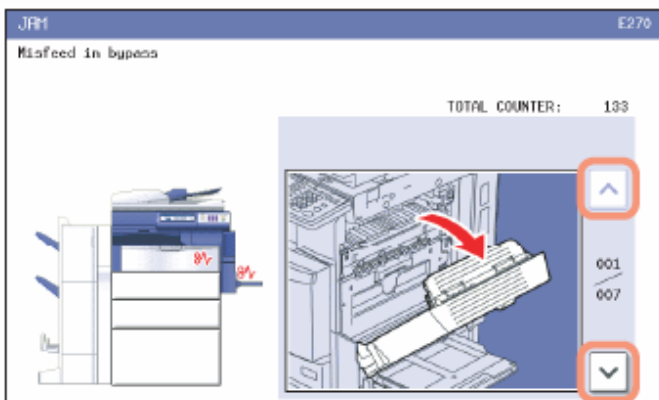


The user then simply slides out and removes the old cartridge, and slides in the new replacement cartridge.

MISFEED ACCESS



Above and below: The e-Studio 4520C's designated paper-misfeed access areas are highlighted in the above figure. If a misfeed occurs, it is indicated on the touch screen, which displays each step necessary to locate and correct the misfeed.



In order to access any misfeeds that may occur in the automatic document feeder, the user lifts up this cover and removes the jammed paper from under the guide plate.



To access the fuser and side misfeed-access area, the user first opens the automatic duplexing unit.



To remove a paper jam in the fuser unit the user must open both the automatic duplexing unit and the jam releasing cover.



If the paper jam occurs in the Reversing Automatic Document Feeder, the user must open the reverse cover and remove the original.



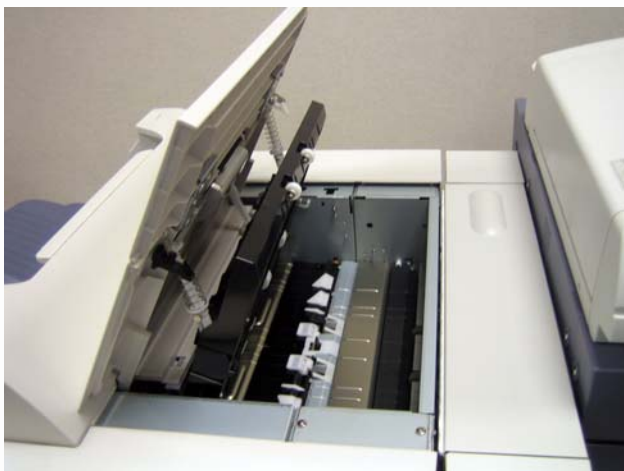
When the optional finisher is installed, the Bridge Unit cover can be lowered to remove any paper jammed between the fuser and the finisher.



Paper jams can occur in the large capacity feeder. When this occurs, users can simply open the large capacity paper feed cover and remove the jammed paper.



When a paper jam occurs in the Hole Punch unit, the user must open the front cover and turn the green knob so the punches are up and the paper can be released.



Above is the Saddle Stitch Finisher's misfeed-access area which can be accessed by opening the top cover and removing the jammed paper.

DEVICE MANAGEMENT

An efficient device-management software system is critical in order to take maximum advantage of a device's feature set, be it a printer, fax, scanner or multifunctional peripheral (MFP).

Device management is typically provided via a Web server on the device controller. This Web server is accessed using any desktop Web browser. The user simply enters the device's IP address into the address line of their Web browser. Note that administrators and office users have different management and monitoring needs.

General Office Users

As noted previously, end users want to know if a device is capable of handling a particular job, current status (such as "Ready"), and current supply levels (media, toner, ink), as well as if there are any other jobs waiting to be printed.

Administrators

The aim of most network administrators is to obtain greater control over networked devices without having to leave their own desk. From their computer desktop, they would like to be able to set up the device on the network, establish security for IP filter ranges, apply cost-control measures, check supply levels, and set up automated e-mail alerts for different staff members when problems occur or maintenance needs must be met.

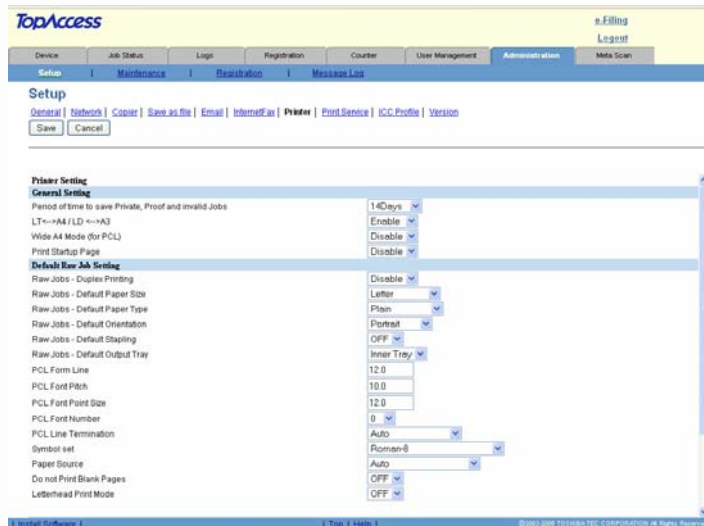
Due to the nature of a device's Web server, this capability is usually limited to an individual device. However, many manufacturers also include a network device- management fleet tool, which allows for the concurrent monitoring and management of multiple devices connected to the network. Many also provide plug-ins for the most popular IT device-management utilities in order to ensure that the maximum amount of information can be relayed from their device to the third-party application.



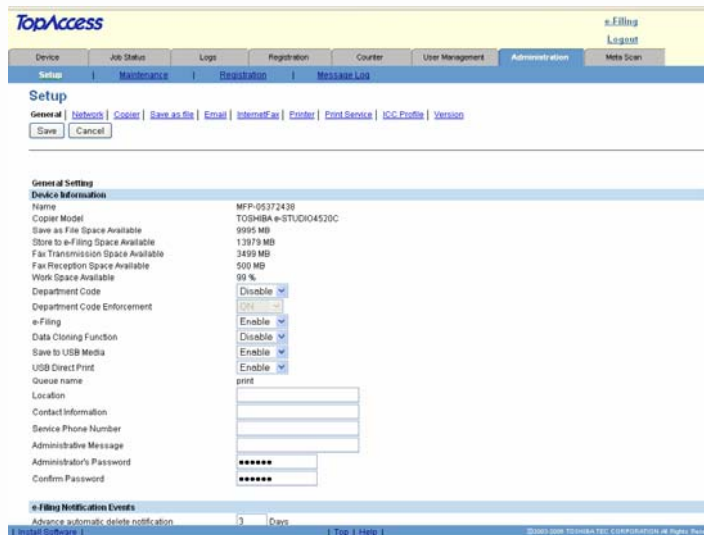
Toshiba provides a couple of solutions for monitoring the device and jobs. Among them is TopAccess, a web-based solution that enables clients to view device status and configuration, and enables administrators to manage and configure system and network settings.



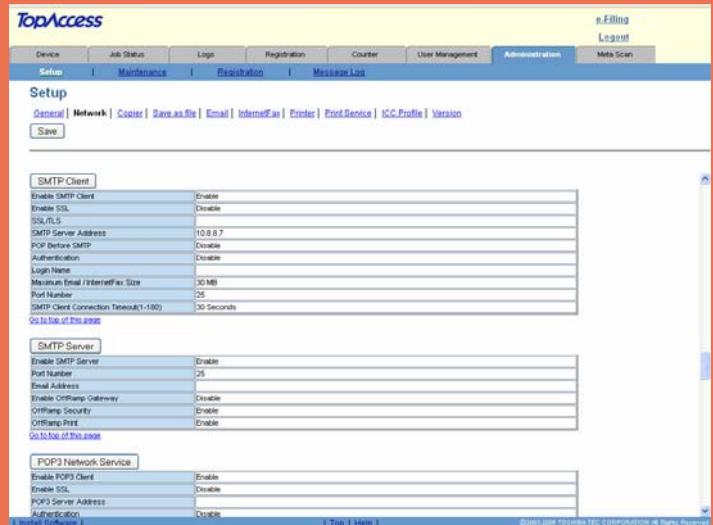
Toshiba also provides plug-ins for Web JetAdmin, which is considered a simple; print and imaging peripheral management software tool that helps optimize device utilization, control color costs, secure devices, and streamline supplies management by enabling remote configuration, proactive monitoring, security, troubleshooting, and reporting of printing and imaging devices.



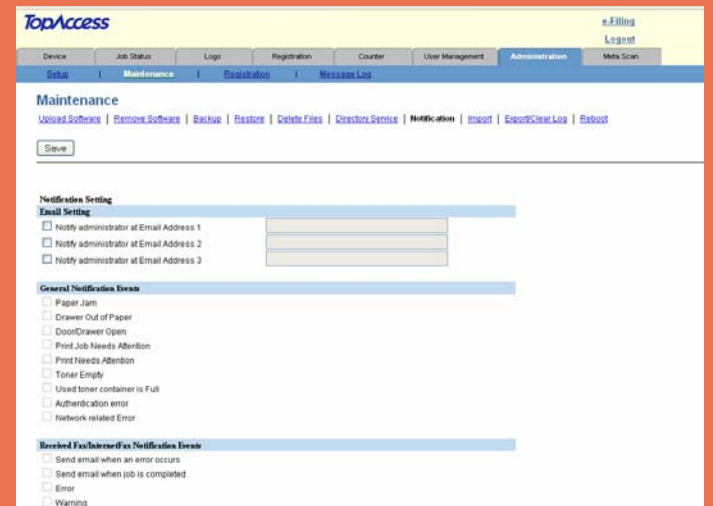
Administrators can modify the device's printer default settings and enable or disable the device to automatically print duplex mode, print startup pages, and set other basic print defaults.



Administrators can also change the device's general default settings and enable or disable the Department Code tracking, e-Filing, Save to USB Media, and USB Direct Print functions.



From TopAccess, administrators can set up authorized user lists and IP filters to limit access to the device from specific PC address ranges. They also can establish automatic routing of incoming faxes to lockable mailboxes or folder destinations. Administrators also have the ability of setting up the Simple Mail Transfer Protocol (SMTP) Service so that e-mail can be sent from the device.



An administrator can set up to three e-mail addresses to route specific notifications. Some other advanced systems offer unlimited e-mail addresses, but the TopAccess option is probably more than adequate for most environments. The administrator can set up a local office contact for easy fixes such as media and toner refill. More complex technical issues can be routed to tech support. E-mails automatically can be sent to the dealer for tasks like imaging drum replacement.

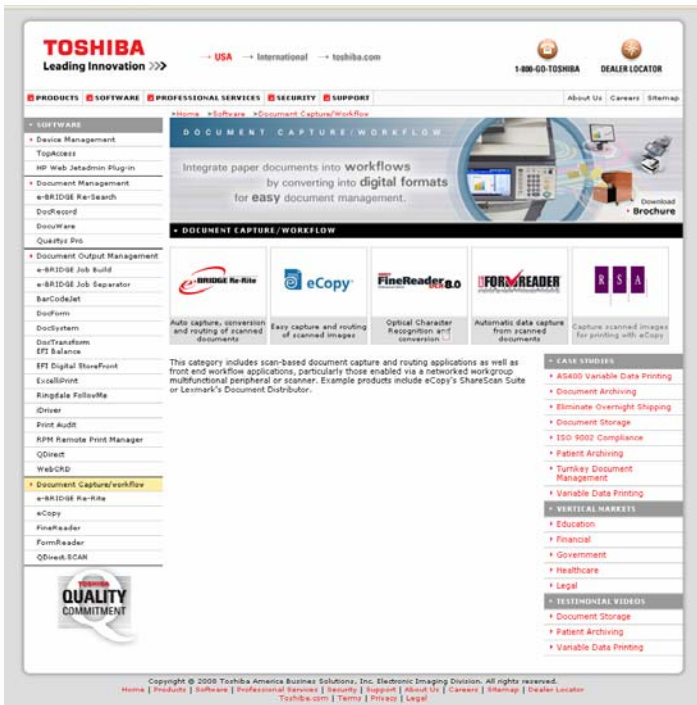
The screenshot displays the Toshiba e-STUDIO4520C website's Document Management section. The header includes the Toshiba logo, navigation links (USA, International, toshiba.com), and contact information (1-800-GO-TOSHIBA, DEALER LOCATOR). The main navigation bar lists PRODUCTS, SOFTWARE, PROFESSIONAL SERVICES, SECURITY, and SUPPORT. The left sidebar contains a list of software products including e-BRIDGE Re-Search, DocRecord, DocuWare, and Questys Pro. The main content area features a large banner for Document Management with the text: "Control the flow of information across the network, provide secure document storage, retrieval and optimized document distribution." Below this, there are four product tiles: e-Discovery & Records Management, Seamless electronic document integration, Fully scalable and new Web Client for easy use, and Windows Explorer-like DM loaded with extras. A "CASE STUDIES" section lists various applications like AS400 Variable Data Printing, Document Archiving, and Patient Archiving. The bottom of the page includes a "QUALITY COMMITMENT" logo and copyright information.

Toshiba also provides several document management software solutions some of which include e-BRIDGE Re-Search, DocRecord, DocuWare, and Questys Pro.

Some of these document management solutions are used as workgroup document repositories with searching, indexing, retrieval, and other baseline document management and records management capabilities.

The screenshot displays the Toshiba e-STUDIO4520C website's Document Output Management section. The header is identical to the previous screenshot. The main navigation bar lists PRODUCTS, SOFTWARE, PROFESSIONAL SERVICES, SECURITY, and SUPPORT. The left sidebar contains a list of software products including e-BRIDGE Job Build, e-BRIDGE Job Separator, BarCodeJet, DocForm, DocSystem, DocTransform, DocuWare, and Questys Pro. The main content area features a large banner for Document Output Management with the text: "Produce the best print jobs, protect against unauthorized use, track usage and charge-backs, and control costs." Below this, there are four product tiles: e-BRIDGE Job Build, e-BRIDGE Job Separator, BarCodeJet, and DocForm. A "CASE STUDIES" section lists various applications like AS400 Variable Data Printing, Document Archiving, and Patient Archiving. The bottom of the page includes a "QUALITY COMMITMENT" logo and copyright information.

Toshiba provides a host of solutions for document output management, as well as solutions for tracking, measuring, and monitoring document output from the 4520C. Some of the solutions also provide security features and functions that prevent unauthorized access.



Toshiba offers several integration options with many of today's most popular document capture / workflow solution providers. Sample products include eCopy's ShareScan Suite, ABBY FineReader, and RSA Qdirect. Scan.

WHAT WE LIKED

- The control panel's hard keys are large, well-organized and clearly labeled, while the touch screen features large text for easy viewing, as well as a simple design for easy navigation. The touch screen is virtually the same as other Toshiba E-Studio devices' touch screens, which will make it especially easy for E-Studio users to quickly acclimate to it.
- The e-Studio 4520C's LCD-color touch screen provides easy access to several common and frequently used copier settings on the Basic Copying screen. This enables copy users to quickly and easily make typical settings without having to navigate through to many sub-menus, and significantly reduces the time to make copy-job settings. BERTL was able to make frequently used copier settings in a matter of only 2 or 3 key presses (see "Selections Required for Frequently Used Copy Functions" chart on page 18).
- For network and device management, Toshiba provides its TopAccess Web Software Suite. TopAccess Internet Services provides an easy-to-use Web-based interface, and can be used to view detailed system and consumables' status. It also enables administrators to manage and configure device and network settings. This Web-based solution enables

administrators to monitor and manage a fleet of devices from any workstation on the network.

- TopAccess Internet Services provides automatic e-mail alerts when the system requires attention.
- Both PCL and PostScript drivers are relatively easy to use and logically organized. Both drivers have nearly the same exact user interface. This will enable users to quickly and easily switch between drivers and allow them to find the settings they need from one driver to another with ease.
- Very easy toner and paper replacement. Ability to change paper while in use.
- Misfeed-access areas are easy to locate and access. Correcting paper jams can be easily accomplished by following the step by step guide displayed on the control panel.

WHAT WE WOULD LIKE TO SEE

- Overall, BERTL found the e-STUDIO4520C very easy to use and maintain, we would have liked to have seen device status and consumable levels communicated using the print driver.
- Despite the fact that the e-STUDIO4520C offers users the ability to print to Front and Rear Covers, the e-STUDIO4520C only allows users to copy to the Front Cover and not the Rear Cover.

MEDIA INPUT

Substrate (media) handling is a core requirement of every device. If a device cannot print a file on specific media desired by the user, it hardly matters how fast the print engine is, or how many pages it can produce.

A device's media-handling capability basically concerns how it can handle two key criteria: the media size and media weight it can feed, as well as the maximum number of pages that can be loaded in the device's drawers, trays, etc. The greater the media capacity, the less time users will spend reloading media.



The e-STUDIO4520C shown above equipped with two standard 550-sheet paper drawer, 100-sheet bypass tray, and optional 2,500-sheet tandem large-capacity feeder.

Media Handling Checklist

Minimum Media Weight	17 lb. bond (64 gsm)
Maximum Media Weight	100 lb. cover (280 gsm)
Feeds maximum media weight from all sources?	No
Offset Stacker	Optional
Finisher	Optional
Hole Punch	Optional

Saddle-Stitch Finisher	Optional
Post-Process Insertion (PPI)	No
Trimmer	No
Folder	No
Mail Bins	No
Booklet Maker	Optional

MEDIA OUTPUT AND FINISHING

Office workgroup devices' media-output handling options range from duplex printing to saddle-stitch booklet making. Many devices offer a choice of finisher/staplers, which provide a low-cost, minimum footprint solution, or a high-capacity, fully featured solution such as multi-position stapling, saddle-stitch booklet maker and/or document hole puncher.

BERTL evaluates these functions looking at how the same job outputs at different speeds when different finishing options are specified. The impact of the finishing selection is determined by timing jobs that are sent to a device with various finishing settings.

Stapling

Lower-cost finisher/stapler units often have a 15- to 30-sheet maximum stapling capability and are often limited to corner stapling. Floor-standing, higher-cost finishers typically provide 50-sheet capability and provide both corner and double stapling.

Saddle-stitch booklet making allows users to create folded, center-stapled booklets. Some saddle-stitch finishers only handle 10 sheets (for producing 40-page booklets), while others handle up to 15 sheets (for producing 60-page booklets).

Mail Bin Units and Offset Output

Many workgroup devices provide offset stacking (each set is offset from the next) to make it easier to separate jobs. Some also provide physical mailbox units that allow each user to send jobs to their own mailbox tray. However, most mailbox units do not accept finished (such as stapled) jobs. A multi-tray finisher can also offer some form of job separation typically used to separate different types of jobs (fax, print, copy) for easier identification.

Post-Process Insertion (PPI)

A post-process insertion unit can be used to automatically insert pages into completed print or copy jobs. These inserts can include chapter covers, color pages and heat-sensitive media.

ORIGINAL HANDLING

While scanning speeds and duty volumes may be based on perfect, standard letter/A4 size office-grade laser printer media, a much wider range of media substrates is commonly used and handled in the office world every day.

Scanning Speed

Obviously, the faster a scanner can scan originals, the faster the user can retrieve those originals and return to their desk, the sooner the device is available for someone else to use. Slower scanning means diminished productivity.

Document Feed Speed			
# of originals	MONOCHROME MODE	Time In Seconds	OPM*
10	Simplex Originals	16.72	35.9
5	Duplex Originals	31.94	9.4
10	Mixed-Size Originals	24.53	24.5
COLOR MODE			
10	Simplex Originals	16.97	35.4
5	Duplex Originals	32.06	18.7

*Originals per minute.

WHAT WE LIKED.

- Versatile media handling, as all paper drawers accept up to 11"x117" paper, while the bypass tray accepts 3"x5" index cards up to 12" x 47" banner size. Banners can be used for signage and promotional materials.
- The multipurpose tray can also be used to print on heavy stock up to 100 lb. cover (280 gsm).
- Paper capacity can be expanded to a substantial 3,700 sheets.
- Optional Multi-Position Finisher: 2000-sheet stacker with 50 sheets stapling capacity and with optional Multi-Position Hole punch;
- Saddle-Stitch Finisher: 2000-sheet stacker (1,000 per tray), 50 sheets stapling capacity and optional Multi-Position Hole punch.

WHAT WE WOULD LIKE TO SEE

- Overall, BERTL was very satisfied with the E-Studio 4520C's paper-handling capabilities.

Summing Up

Positioned very near the top of Toshiba's office-color MFP lineup, the e-STUDIO4520C is designed for businesses with less demanding print volume needs, multi-user offices and mid-sized workgroups and enterprises. Toshiba rates the e-STUDIO4520C at a substantial 45/45 (monochrome/color) ppm and in testing the system was able to match these speeds:

As with all devices, customers should note that BERTL has found that PostScript emulations, such as the one employed by the e-Studio 4520C, may not provide the same degree of precision and predictability when printing very complicated data as a genuine Adobe PostScript print driver.

- Reflecting the efficiency of its e-Bridge controller architecture, the e-STUDIO4520C proved very productive in network-printer mode:
 - Tested FPOT was fast as 17.82 seconds in network-printer mode.
 - Tested simplex network-print speed was fast as up to 44.1 ppm, matching Konica's rated print speed of up to 45 ppm, while tested duplex network-print speed was fast as up to 40.8 ppm.
- Productivity in copier mode was also good. Tested copier FPOT was fast as 14.78 seconds while tested copier speed was as fast as up to 46.6 ppm.
- Overall, the e-STUDIO4520C produced good image quality in testing. In both print and copy modes, output displayed very good print density and good halftones. It also produced output that displayed very good resolution in copy mode and very good resolution in printer mode. Its output also displayed excellent line and dot control, which is essential for producing fine detail.
- The e-STUDIO4520C was exceptionally easy to use and maintain, from the large and easy-to-navigate touch screen to using the print drivers and device-management software. The system's control panel can also be tilted and rotated to eliminate glare and make it easier for wheelchair users to access.
- Paper and toner were easy to replenish.
- Toshiba's TopAccess Internet Services, which provides detailed device and consumables' status, and provides network configuration, job template management, access management and accounting controls for administrators, is easy to use and very capable. Toshiba also provides compatibility with Hewlett-Packard's Web JetAdmin network-management solution.
- Toshiba's Job Scanning Templates offer users an easy way to automate routine scan-and-distribute workflows by recalling a set of preferred scan settings right from the control panel.

At its list price of \$20,999 (which includes standard copier and printer controller), the E-STUDIO4520C is economically priced for a mid-size workgroup office color MFP. No device is perfect, document feed speeds could be better as, competitive units routinely scan at or near manufacturer's rated speed. Despite the fact that the e-STUDIO4520C offers users the ability to print to Front and Rear Covers, the e-STUDIO4520C only allows users to copy to the Front Cover and not the Rear Cover. Additionally, we would have liked to have seen device status and consumable levels communicated using the print driver.

Overall, the e-STUDIO4520C proved to be a highly-competitive workgroup office-color system in testing. BERTL found the e-STUDIO4520C consistently productive no matter the application and feels that it will make short work of mid-volume business-color workloads, while not sacrificing usability, ease-of-use, versatility or image quality. Therefore, BERTL highly recommends the e-STUDIO4520C for offices, mid-size workgroups and enterprises that require a fast and reliable business color and black-and-white digital imaging system.

OFFICE

WHAT WE LIKED

- Tested black-and-white simplex and duplex network-printer speeds in both PCL and PostScript modes were up to approximately 45 ppm, matching Toshiba's rated print speed of up to 45 ppm.
- Tested color network print speed was up to 20.5 ppm in PCL and 36.1 ppm in PostScript mode.
- Tested network-printer First Page Out Time (FPOT) was as fast as 17.82 seconds in PostScript mode and up to 19.35 seconds in PCL mode.
- Tested black-and-white FPOT as fast as 14.78 seconds in simplex copier mode, and as fast as 18.20 seconds in duplex copier mode.
- Tested black-and-white copier productivity was up to 46.6 ppm in simplex mode and up to 27.1 ppm in duplex mode.
- Tested color copier productivity was up to 45.7 ppm in simplex mode and up to 26.7 ppm in duplex mode.
- Minimal document-finishing penalty when applying document finishing options to copy jobs.
- Fast document-feeder speeds of up to 35.9 opm in monochrome simplex mode and up to 35.4 opm in color simplex mode.
- Users can copy and store files as a digital image via the e-Studio 4520C's standard USB flash memory drive.
- Images can be scanned, printed and faxed directly to the device's hard drive and stored in e-Filling boxes. Scanned images stored in the e-Filling boxes can then be printed at any time (print-on-demand) e-mailed, sent via fax, sent via Internet fax, routed to a computer workstation, an FTP or SMB server, etc.
- Support for several file formats that include TIFF Multi/Single Page, PDF Multi/Single Page, Secure PDF, Slim PDF, JPEG, and XPS Multi/Single Page. Support for additional formats can be expanded up to 17 file formats with e-Bridge Re-Rite.
- LDAP compatibility enables users to access the network address book, making destination-management chores easier for network administrators.
- Users can scan hardcopy documents, converting it into electronic format, and then send the files to a USB flash memory device for storage via the device's standard USB flash memory drive.
- The control panel's hard keys are large, well-organized and clearly labeled, while the touch screen features large text for easy viewing, as well as a simple design for easy navigation. The touch screen is virtually the same as other Toshiba E-Studio devices' touch screens, which will make it especially easy for E-Studio users to quickly acclimate to it.
- The e-Studio 4520C's LCD-color touch screen provides easy access to several common and frequently used copier settings on the Basic Copying

screen. This enables copy users to quickly and easily make typical settings without having to navigate through to many sub-menus, and significantly reduces the time to make copy-job settings. BERTL was able to make frequently used copier settings in a matter of only 2 or 3 key presses (see "Selections Required for Frequently Used Copy Functions" chart on page 18).

- For network and device management, Toshiba provides its TopAccess Internet Services Suite. TopAccess provides an easy-to-use Web-based interface, and can be used to view detailed system and consumables' status. It also enables administrators to manage and configure device and network settings. This Web-based solution enables administrators to monitor and manage a fleet of devices from any workstation on the network.
- TopAccess Internet Services provides automatic e-mail alerts when the system requires attention.
- Both PCL and PostScript drivers are relatively easy to use and logically organized. Both drivers have nearly the same exact user interface. This will enable users to quickly and easily switch between drivers and allow them to find the settings they need from one driver to another with ease.
- Very easy toner and paper replacement. Ability to change paper while in use.
- Misfeed-access areas are easy to locate and access. Correcting paper jams can be easily accomplished by following the step by step guide displayed on the control panel.
- Versatile media handling, as all paper drawers accept up to 11"x117" paper, while the bypass tray accepts 3"x5" index cards up to 12" x 47" banner size. Banners can be used for signage and promotional materials.
- The multipurpose tray can also be used to print on heavy stock up to 100 lb. cover (280 gsm).
- Paper capacity can be expanded to a substantial 3,700 sheets.

WHAT WE WOULD LIKE TO SEE

- Overall, BERTL found the e-STUDIO4520C very easy to use and maintain, we would have liked to have seen device status and consumable levels communicated using the print driver.
- Despite the fact that the e-STUDIO4520C offers users the ability to print to Front and Rear Covers, the e-STUDIO4520C only allows users to copy to the Front Cover and not the Rear Cover.
- We would like to see faster document-feed speeds.

About BERTL

The success of an organization depends on its ability to manage its information and assets. An effective workflow process requires the complex integration of information, devices, software and people.

IT managers, office managers, and other knowledge-management professionals need to know what digital imaging devices would best serve their specialized workflow processes.

BERTL's services are designed around this real-world framework, delivering business consumers the independent analysis and insight needed to make critical decisions about digital imaging's role in their organization.

Independent Analysis and Insight

BERTL's reports, comparative data, and strategic guides look at digital imaging through the eyes of the business user. The research examines not only the technical features, but also vertical market applications, and business benefits. The impact on worker productivity is a primary concern.

BERTL is 100 percent independent. It receives no funding from manufacturers and all product evaluations and reports are published at BERTL's own expense for its subscribers. Business users worldwide trust BERTL for objective, unbiased analysis of digital imaging systems.

BERTL Services

Reports and Star Ratings

BERTL analysts provide detailed reports on the technical and practical benefits of thousands of color and monochrome workgroup, office, graphic arts, and production devices.

Product Specifications

DataCheck Gen II provides the most current competitive data on printers, copiers, MFPs, fax devices, wide format printers, scanners, and more.

News, Interviews, and Analysis

The ITchat online magazine provides insight into the dynamics and trends of the digital imaging marketplace through interviews, feature articles, and software reviews.

BERTL Awards

BERTL analysts recognize the leading devices and software solutions in the annual BERTL's Best awards. BERTL also honors the performance of manufacturers in the annual Readers' Choice selections.

Contact BERTL

BERTL Inc.
363 Route 46 West, Suite 100
Fairfield, NJ 07004
Phone: 1-973-882-0200
Fax: 1-973-882-0201
Email: info@bertl.com
www.BERTL.com