

BERTL

EXCEPTIONAL



Toshiba e-STUDIO455



45-ppm Monochrome

Print • Copy • Scan • Fax

Key Buyer Benefits

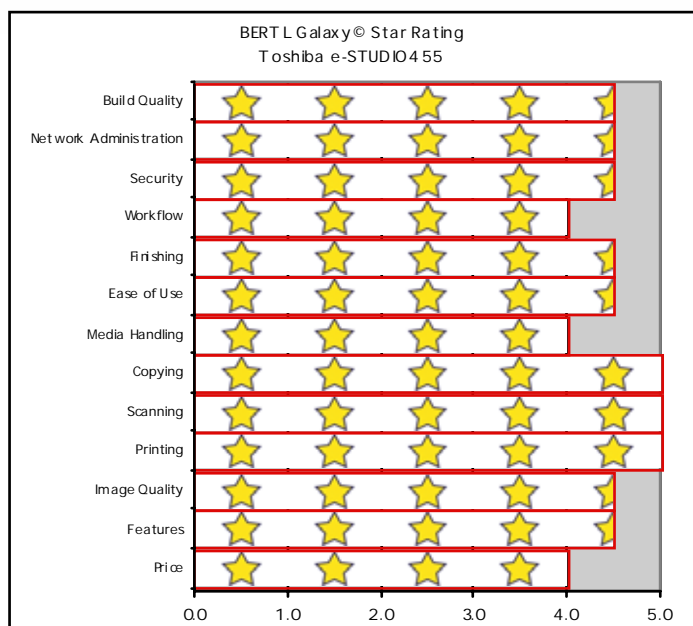
- Energy Star Tier Level II and RoHS compliant
- Superior print and copy productivity
- Good image quality creates professional presentations, graphics and office documents
- Control Panel displays animated step-by-step procedures for device maintenance
- Great design and ease-of-use with the PCL6, PostScript and XPS drivers
- Professional finishing options including saddle stitching, booklet making, stapling and hole punch
- Outstanding ease-of-use for clearing misfeeds, loading paper, and changing toner
- Paper can be added on the fly without any interruptions
- Flexible desktop and network utilities via TopAccess Internet service delivers exceptionally easy to use device monitoring
- Scan to and Print from USB Flash Drives
- Security features include; scrambler board, advanced encryption standard (AES) hard disk encryption, IPv6, IPSec, SNMPv3 and 802.1x network authentication, secure PDF scanning and an optional Data Overwrite kit

100% INDEPENDENT ANALYSIS

TABLE OF CONTENTS

BERTL Galaxy® Star Rating	3
About BERTL's Galaxy® Star Rating	3
Introduction	4
Device Features Summary	4
Print	5
Bandwidth	5
Print Productivity	5
What We Liked/Would Like To See	6
Copy	7
Copy Productivity	7
What We Liked/Would Like To See	8
Scan	9
What We Liked/Would Like To See	9
Image Quality	10
Density	10
Resolution	10
Halftones	10
Negative/Positive Lines	11
Negative/Positive Dots	11
What We Liked/Would Like To See	11
Ease of Use	12
Programming the Control Panel	12
Print Drivers	13
Routine Maintenance	16
Client Utilities and Device Management	17
What We Liked/Would Like To See	20
Media Handling	21
Media Input	21
Loading Media	21
Media Output and Finishing	22
What We Liked/Would Like to See	22
Summing Up	23
About BERTL	24

OFFICE



ABOUT BERTL'S GALAXY® STAR RATING

BERTL understands how difficult it is to choose one office-imaging device over another and exists to make this an easier choice for the consumer. That said, how does a consumer decide between two or more devices that carry the same BERTL 3-, 4- or 5-star rating?

Category-Criteria

Build Quality - An analysis of the construction quality of the major components that the user must interact with on a regular basis (e.g.: paper trays, access covers, supplies, etc.).

Network Administration - The quality of administrative and management utilities (both executable and Web-based) when compared to that of a sliding scale benchmark based on the network administration feature set of other vendors.

Security - A security feature-set analysis (removable hard disk, hard-disk overwrite, encryption, IP filtering, Microsoft Windows NT Authentication and LDAP lookup) when compared to a sliding scale benchmark based on the security feature set found on other devices.

Workflow - The quality of the network scanning, job submission, document management, sharpening and enhancement, file conversion and job layout tools based on a sliding scale benchmark when compared to the workflow tools employed by other devices.

Finishing - The productivity penalty (punch, staple, booklets) based on tests and finishing specifications and effectiveness based on a sliding scale benchmark when compared to that of other finishing systems found on other devices.

Ease of Use - Ease of maintenance (adding paper, toner, misfeeds, cleaning) and ease of using the documentation, help, control panel, print drivers and client utilities when compared to a sliding scale benchmark based on the ease of use of other devices.

Media Handling - Throughput specifications and evaluations based on a sliding scale benchmark when compared with the handling of special media (e.g.: oversize, thick or coated stock) found on other devices.

Copying - Copy productivity based on tests and a feature-set analysis when compared to a sliding scale benchmark based on the feature set found on other devices.

Scanning - Simplex and duplex scan productivity and quality based on tests and a comparison of the overall scan and send feature set when compared to a sliding scale benchmark based on the feature set found on other devices.

Printing - Duplex and simplex print productivity based on tests and a printing feature set analysis when compared to a sliding scale benchmark based on the feature set found on other devices.

Image Quality - The quality of business color images (text, dot, line, halftone and solid quality) based on tests and a subjective rating on the quality of continuous tones (photos) when compared to a sliding scale benchmark based on the continuous tone quality produced by other devices.

Features - The feature set compared to a sliding scale benchmark based on the feature set found on other devices.

Price - MSRP of a system configured with network printing, copying, scanning, and two media trays/rolls (wide format) configuration.

In June 2009, Toshiba America Business Solutions announced the expansion of its monochrome MFP product line e-STUDIO205L/255/305/355/455. This series comes with a host of powerful features for businesses of all sizes. Features include: print and scan as a standard function; a full-color 8.5" WVGA touch-screen; scan-to and print-from-USB and an impressive monthly duty cycle of 150,000 pages. These versatile monochrome multifunction products (MFPs) also offer enhanced productivity and superior image quality. Furthermore, color scanning is a large improvement from previous models and a valuable cost-saving feature for businesses that may need color scanning but do not require full-color output.

BERTL recently tested the Toshiba e-STUDIO455, which has a rated print speed of up to 45 ppm monochrome and has high toner yields of 30,000 impressions per bottle and a drum and developer yield of 150,000 pages. The e-STUDIO455 has flexible media capabilities with a maximum paper capacity of 3,200 pages, the ability to print on stock as heavy as 110lbs (bypass tray) and paper sizes up to 11"x 17".

The new e-STUDIO455 monochrome MFP is designed to be easy on the environment and offers the following features:

- Energy Start Tier Level II and RoHS compliant
- Standard Automatic Duplexer
- High quality output with 2,400 x 600 dpi resolution
- Paper can be added to the Large Capacity Feeder during operation
- 1 GB RAM and a standard 60 GB Hard Disk Drive
- Standard 10/100BaseT Ethernet, 802.11b/g Wireless LAN, USB, Bluetooth (HCRP) and USB 2.0 connectivity
- View job queues and check supply levels remotely with Toshiba's Web-based interface TopAccess
- Private Printing feature provides extra security to help ensure files are safe
- Features Toshiba's third generation e-BRIDGE controller with Open Platform architecture. This technology allows third-party software applications, such as Microsoft SharePoint and Exchange, to integrate directly with the e-STUDIO device
- The Data Disk Overwrite option automatically overwrites hard drive data after each copy, scan, fax and print job
- Superior finishing options including saddle stitching, booklet making, stapler and hole punch

This series is available in five different models/configurations and sold exclusively through Toshiba authorized providers. Pricing for each model in the series is as follows:

- | | |
|----------------|----------|
| • e-STUDIO205L | \$5,095 |
| • e-STUDIO255 | \$6,650 |
| • e-STUDIO305 | \$8,050 |
| • e-STUDIO355 | \$8,625 |
| • e-STUDIO455 | \$10,799 |

In the following test report, BERTL takes an in-depth look at the Toshiba e-STUDIO455, testing and evaluating its productivity, image quality and ease-of-use.

Toshiba e-STUDIO455 Features Summary	
List Price	\$10,799
Imaging Technology	IEPM (Dry Process) Laser
Standard Functions	Print, Copy, Scan, Document Filing
Optional Functions	Fax
Maximum Monthly Print Volume	150,000
Mono Print Speed	45 ppm
Mono First Page Out Time	3.7 seconds
Automatic Duplex	Yes
Network Scanning	Yes
Color Scanning	Yes
NT Authentication	Yes
LDAP Compatibility	Yes
Hard Disk Overwrite	Yes



The Toshiba e-STUDIO455 as tested by BERTL.

PRODUCTIVITY

Evaluating print productivity is not as simple as timing copy jobs. The printing process involves several steps and can be affected by a variety of factors along the way.

The document must first be spooled by the print driver into a PCL or PostScript file. The PCL or PostScript file is then sent to the printer where it is raster image processed (Ripped) into image data by the device processor. The image data is then sent to the marking engine and output as printed pages.

There are three obvious factors highlighted above (spool time, RIP time, and print engine speed), which can all make or break a device's overall productivity. Other factors that could affect productivity and print speed of the device are the use of other device functions such as scanning and faxing.

It is possible to time and compare these factors through the use of careful preparation, conditioning and testing. Following are charts that show printing performance when tested under controlled conditions.

PRINT DRIVERS (PDLs)

+ The e-STUDIO455 also delivers multiple Page Description Languages (PDLs) including the following; PCL6, PostScript 3 and XPS.

+ The PostScript and PCL6 drivers offer bidirectional communication with the device with its user-selectable interface for all of the Windows base operating systems.

+ Driver supports the following OS's; Windows 2000/XP/2003/Vista/2008, Mac X OS 10.2.4/10.3/10.4/10.5 (OS 10.4 PPD) UNIX, Linux, AS/400, and SAP R/3

OPERATING SYSTEMS SUPPORTED

+ The e-STUDIO455 offers support for a wide array of operating systems such as the following

- Windows 2000/XP/2003/Vista/2008
- Mac X OS 10.2.4/10.3/10.4/10.5
- UNIX
- Linux
- CUPS

NETWORK PROTOCOLS

+ Supported Network Protocols include: IPX/SPX, TCP/IP (IPv4/V6), EtherTalk, AppleTalk PAP, LPR/LPD IPP w/Authentication, Port 9100 Bluetooth, SMB and Netware.

CONNECTIVITY

+ Connectivity options for the e-STUDIO455 include Ethernet 10/100BaseT, USB 2.0, 802.11b/g Wireless LAN and Bluetooth (HCRP).

TESTING RESULTS

Network-Bandwidth/Print File Sizes			
	Native File Size	PCL6	PostScript
1-page Digital Photo PDF	4.48 MB	4.18 MB	5.62 MB
4 page Passport Form PDF	0.08 MB	277 KB	369 KB
16-page Magazine in PDF	1.78 MB	4.74 MB	3.30 MB
22-page Excel Worksheet	0.12 MB	255 KB	143 KB
32-page Text-Based PowerPoint	0.23 MB	1.99 MB	2.05 MB
32-page Graphic Intensive PowerPoint	4.20 MB	6.58 MB	6.21 MB
38-page Form Word Document	0.91 MB	3.29 MB	3.34 MB
50-page Text-Based PDF	0.17 MB	693 KB	1.50 MB

Print Productivity (seconds)			
# of Originals	Mode	PCL Driver	PostScript Driver
50	Simplex	44.6	44.6
50	Duplex	44.2	44.5

			First Page Out Time (seconds)		Job Time (seconds)	
Job List	Media Size	Mode	PCL6	PostScript	PCL6	PostScript
1-page Digital photo print original	Letter	1:1	17.12	18.24	17.12	18.24
4-page Passport Form PDF	Letter	1:1	12.74	12.90	17.55	18.19
16-page Magazine PDF	Letter	1:1	17.02	13.62	36.98	34.84
22-page Excel Worksheet	Letter	1:1	16.84	16.68	46.52	46.83
32-page Text-Based PowerPoint	Letter	1:1	25.02	25.83	68.49	69.05
32-page Graphic Intensive PowerPoint	Letter	1:1	16.77	16.27	62.62	67.01
38-page Form Word Document	Letter	1:1	15.55	15.74	66.32	66.15
50-page Text-Based PDF	Letter	1:1	24.05	24.60	94.17	94.05
50-page Text-Based PDF (duplex)	Letter	1:2	27.08	27.67	94.92	94.19

WHAT WE LIKED

- Tested simplex network-print speed with the PostScript driver was as fast as 44.6 ppm, closely matching Toshiba's rated speed of 45 ppm.
- Tested simplex network-print speed with the PCL6 driver was as fast as 44.6 ppm.
- Tested duplex network-printer productivity was extremely productive up to 44.5 ppm with the PostScript driver and 44.2 ppm with the PCL6 driver.
- Tested First-Page-Out-Time was 12.74 seconds with the PCL6 driver and 12.90 seconds with the PostScript driver.
- In BERTL's job stream test the PCL6 driver completed the stream job test in 5 minutes and 23:13 seconds, running at 43 ppm, which translates to an efficiency rate of 95%. Using the PostScript driver the efficiency rate was up to 90%.

WHAT WE WOULD LIKE TO SEE

- BERTL was extremely satisfied with the Toshiba e-STUDIO455's performance in network-printer mode.

PRODUCTIVITY

Advertised speeds are always quoted using the simplest route—in-and-out of a device. Of course, users often apply finishing options, incorporate different media sizes and types into the document, print in duplex, and add other elements that can affect speed. In the chart below, BERTL tests how different modes—mixed-size original mode and duplex mode—affect document-feeder productivity.

To assess copier productivity, BERTL ran copy jobs in order to determine document-feeder scanning speed, the affect of the first set out on overall engine speed, and whether specific job attributes affect engine throughput capability. Each job was set up by feeding media from the shortest media route to the shortest available output destination. A separate test examines how adding finishing/output destinations affects productivity.

COPY FEATURES

- + Optional Reversing Automatic Document Feeder (RADF) with capacity for up to 100-sheet.
- + Users can submit jobs that require single or duplex copying. The e-STUDIO455 supports copy jobs that require 1:1, 1:2, 2:2 and 2:1 side printing.
- + Users can make copies that range from 1 to 999 in quantity.
- + Toshiba's Rated Output Speed is up to 45 cpm.
- + Toshiba's Rated First-Copy-Out Time (FCOT) is as fast as 3.7.
- + Copy Resolution is set at 2400 x 600 dpi (with Smoothing).
- + The Toshiba's can simultaneously copy, fax and scan.
- + Users can use the variable zoom to scale from 25% to 400% in 1% increments.

First Copy Out Time Using the Automatic Document Feeder	
	Monochrome Mode
Number of Originals	Time In Seconds
1 Simplex Original	4.43
1 Simplex Original (Duplex Model)	12.81

First Copy Out Time Using the Platen Glass	
	Monochrome Mode
Number of Originals	Time In Seconds
1 Simplex Original	3.65

Copy Job Time			
# of originals	Monochrome Mode	Time In Seconds	CPM
10	1 sided to 1 sided	15.56	38.6
10	1 sided to 2 sided	22.90	26.2
10	2 sided to 1 sided	52.90	11.3
10	2 sided to 2 sided	55.35	10.8

Copy Productivity (seconds)		
# of Originals	Mode	Monochrome
50	Simplex	45.7
50	Duplex	45.5



Above and next page: The Toshiba e-STUDIO455 platen glass and automatic document feeder (ADF).



Document Finishing Penalty				
# of originals	Finishing Selection	Time In (Sec)	1 Set Time (Sec)	Penalty (Sec)
10/5	Corner Staple	83.31	25.83	0.09
10/5	Side Staple	84.66	26.10	0.07
8/5	Saddle-Stitch Booklet	348.78	78.92	5.35
10/5	Covers and Inserts	187.76	46.72	4.26



The "Copy" touch screen is clearly labeled and easy to read and can be adjusted to avoid any glares.

WHAT WE LIKED

- Copy touch screen is clearly labeled and easy to use.
- Tested copy First-Page-Out-Time was 3.65 seconds off the platen glass and 4.43 seconds using the automatic document feeder.
- Tested total job time in simplex mode was 45.7 cpm; matching Toshiba's rated copy speed of up to 45 ppm.
- Very productive duplex copier productivity—up to 45.5 cpm.

WHAT WE WOULD LIKE TO SEE

- BERTL was extremely satisfied with the Toshiba e-STUDIO455's performance in copier mode.

Document Feeder Productivity

BERTL also takes the user into account and looks at how document-feeder productivity affects the amount of time a user has to wait at the device before they can walk away with their originals.

Document Feed Speed			
# of originals	Monochrome Mode	Time In Seconds	OPM*
11	Simplex Originals	14.16	42.4
6	Duplex Originals	29.38	10.2
11	Mixed Originals	15.23	39.9

*Originals per minute.

Scanning Features

+ The e-STUDIO455 offers users the option to scan their jobs in using Grayscale, Black and White and Color Scanning.

+ Users can scan while the system is copying, printing or while it is transferring scan to network or fax jobs.

+The input scanning speed for the e-STUDIO455 is 57 spm using letter-size paper at 300 dpi in B&W mode.

+Authentication include; LDAP, SMTP and Windows Server Domain

Resolution

+ This device offers several resolution options aimed at satisfying the most demanding customers. Options include the following:

- 150 dpi
- 200 dpi
- 300 dpi
- 400 dpi
- 600 dpi

File Formats

+ Toshiba provides users with a multitude of file format options which include;

Standard Features;

- PDF
- Single Page (i.e. Batch mode)
- Multi-Page
- Secure PDF
- TIFF
- JPEG

Advance Scanning Options;

- XPS
- Automatic OCR
- MS Word
- MS Excel
- Searchable PDF w/Adv. Scanning option

These options are sure to meet the needs of the most demanding user.

Scan to E-mail

+ The e-STUDIO455 supports Scan to Email. Users can direct their document destination directly from the device.

+ Users can easily look up and search for a destination or e-mail address by accessing LDAP address directly from the control panel.

Scan to USB

+ By using this feature, users will be able to scan their original documents and save the documents in electronic format into a USB memory device.

WS-Scanner

+ This feature is compatible with the WSD (Web Services for Devices) specifications introduced with the Microsoft Windows Vista. Allowing the user to make preconfigured settings on their client PC and be able to scan documents to their client PC under those specified settings. The benefit for using this function is that it would allow the user to be able to use the settings of their choice without having to create the settings each time in front of the MFP device, which improves workflow and productivity.

Scanning Productivity Test (Pages Per Minute)

Res (DPI)	Scan Color	File Type	Scan Time (sec.)	File Size (MB/KB)	Scans per Minute
200	Black	PDF	13.56	223 KB	44.25
300	Black	PDF	13.56	335 KB	44.25
200	Grayscale	PDF	13.46	2,601 KB	44.58
300	Grayscale	PDF	13.60	4,435 KB	44.12
200	Photo	Color	17.72	2,692 KB	33.86
300	Photo	Color	17.56	5,033 KB	34.17
200	Black	PDF	13.59	347 KB	44.15

*Scan productivity is evaluated based on a test of 1-10 letter sized pages.

WHAT WE LIKED

- Images can be scanned, printed and faxed directly to the device's hard drive and stored in e-Filing boxes. Scanned images stored in the e-Filing boxes can then be printed at any time (print-on-demand) e-mailed, sent via fax, sent via Internet fax or routed to a computer workstation.
- No print slowdown when scanning in jobs or when scan-date transfer is underway.
- LDAP compatibility enables users to access the network address book, making destination-management chores easier for network administrators.
- Scan-to-USB feature allows users to scan documents to a USB memory device for instant portability.
- In BERTL's scan productivity test the e-STUDIO455 produced 33.86 ipm using photo color mode at 200 dpi.
- The smallest file size achieved was 223 KB using black text mode at 200dpi, while the largest file size obtained was 5,033KB using color photo mode at 300 dpi.

WHAT WE WOULD LIKE TO SEE

- BERTL was very satisfied with the Toshiba e-STUDIO455's scanning capabilities.

IMAGE QUALITY

BERTL evaluates the output of several “test targets” in order to determine image quality. Following are descriptions of key elements of image quality. Note the numbered examples on each of the test targets shown in the right column.

Office Color Image Quality

1. **Density of Solid Areas** - Better contrast; more vivid overall images
2. **Line Work** - Better production of lines and text
3. **Halftones** - Better production of photographic and screened images
4. **Negative/Positive** - Better production of fine detail

Photographic Color Image Quality

5. **Flesh tones** - Better production of portraits
6. **Banding** - Better solid and dithered fill
7. **Low Contrast** - Better production of dark images
8. **Saturation** - Better production of bright colors
9. **Caste** - Better color fidelity
10. **Fine Detail** - Better reproduction of fine details

Density of Solid Areas*		
	Copy Density	Print Density
Black	1.35	1.50

*Density is on a scale of 0 to 2.5, with 2.5 being the best possible.

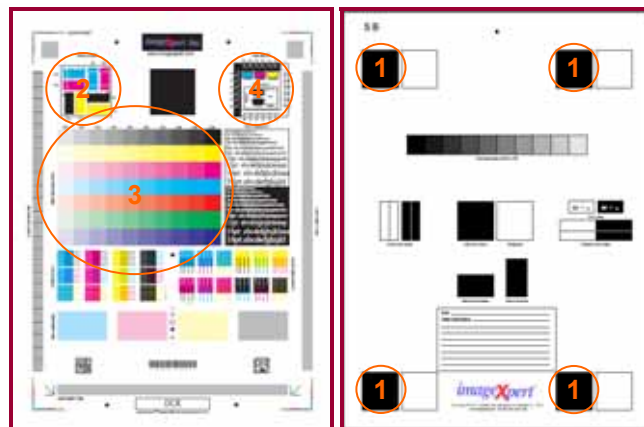
Copy & Print Resolution*				
	Copy Resolution		Print Resolution	
	Vertical	Horizontal	Vertical	Horizontal
Black	3.6	3.6	2.0	2.0

*Line Pairs per Millimeter. For copy resolution, higher is better (range, 2.0-8.0); for printer resolution, lower is better (range, 1.0-5.0).

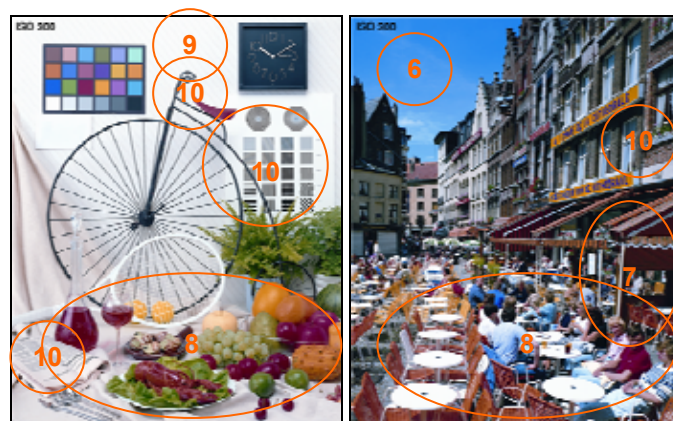
Copy Halftones		
	Min. Gradation*	Max. Gradation**
Black	10	100
Print Halftones		
	Min. Gradation*	Max. Gradation**
Black	10	100

*Minimum gradation is on a scale of 10 – 100 percent in 10 percent increments. The best possible minimum gradation is 10 percent.

**Maximum gradation is on a scale of 10 – 100 percent in 10 percent increments. The best possible maximum gradation is 100 percent.



BERTL uses ImageExpert printer test targets for the evaluation of printed image quality. BERTL technicians measure image density and evaluate the device's ability to produce a full range of halftones and various sizes of negative/positive text, dots and lines in each primary printing color (CMYK).



BERTL uses synthetic (photographic) test images obtained from ISO International Standard 12640--Graphic Technology--Prepress digital data exchange--CYMK Standard Color Image Data (CYMK/SCID) in order to evaluate the ability to print photographic images.

IMAGE QUALITY

Negative/Positive Lines*				
Line Width (points)	Negative		Positive	
	Vertical	Horizontal	Vertical	Horizontal
1	√	x	√	x
2	√	√	√	√
3	√	√	√	√
4	√	√	√	√
5	√	√	√	√
6	√	√	√	√

A "√" mark indicates the device was able to print the line width correctly.
*Chart cells containing an "x" indicate that the printer was not able to print the line width correctly. Overall, the fewer "x's," the better the image quality. If no cells are marked with an "x," then the device was able to print all line widths correctly.

Negative/Positive Dots*	
Line Width (points)	% of Dots Printed
1 pixel Black	100
1 pixel Black Neg	60
2x2 pixel Black	100
2x2 pixel Black Neg	100
Checkerboard apparent?	No

*On a scale of 0 – 100%. The higher the percentage, the better.

WHAT WE LIKED

- Great print and copy density.
- Excellent resolution in both copy and printer modes.
- Great halftone reproduction in printer and copier modes when printing all grayscale shades.
- Output displayed good line control, printing nearly all of BERTL's negative/positive test lines correctly.
- Text was bold, crisp and cleanly formed.
- Excellent production of business charts and graphs.
- 2,400 x 600 dpi resolution (with Smoothing).

WHAT WE WOULD LIKE TO SEE

- BERTL was satisfied with the Toshiba e-STUDIO455's image quality.

PROGRAMMING THE CONTROL PANEL

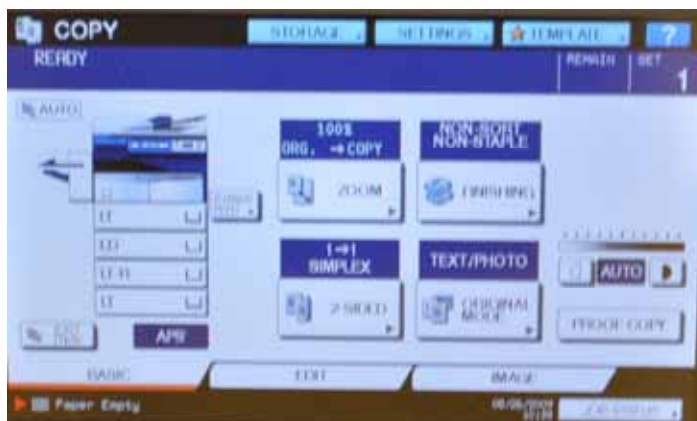
A control panel's ease of use—or lack of—can often have a significant effect on user productivity. The harder it is to select frequently used options such as duplexing, document finishing, etc., the more time the user has to spend programming the device and the less productive they are. Toshiba e-STUDIO455's control panel has a large full color 8.5" WVGA touch screen and several hard keys. On the right side of the control panel users can select different function keys such as Copy, e-Filing, Scan, Print and Fax. Also contributing to this device is the ability to Scan-to and Print from a USB flash drive instantly allowing users a more portable way of accessing their documents.

BERTL was exceptionally impressed with its animated step-by-step instructions for device management and error recovery.

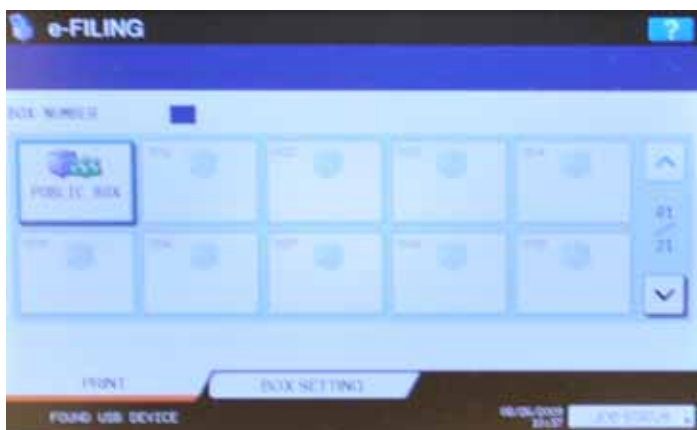


In the chart below, BERTL assesses how many steps are required to make common place settings.

Selections Required for Frequently Used Copy Functions	
Photo Mode	2
Corner Staple	2
1:2	2
2:2	2
Front and Rear Covers	3



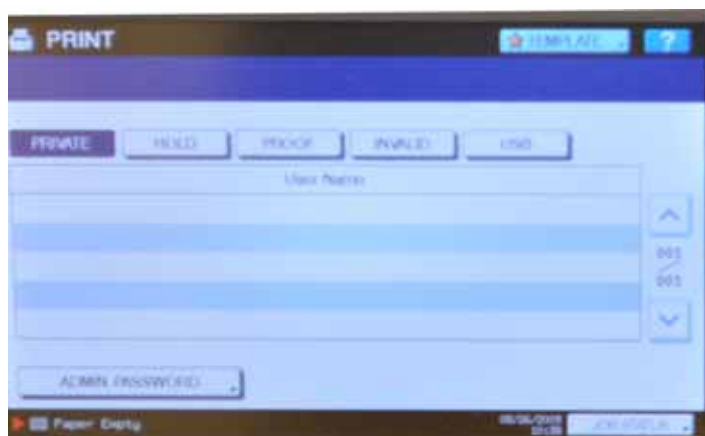
The Copy touch screen's main menu displays the most common copying choices. The blue highlighted buttons on the touch screen display currently selected settings.



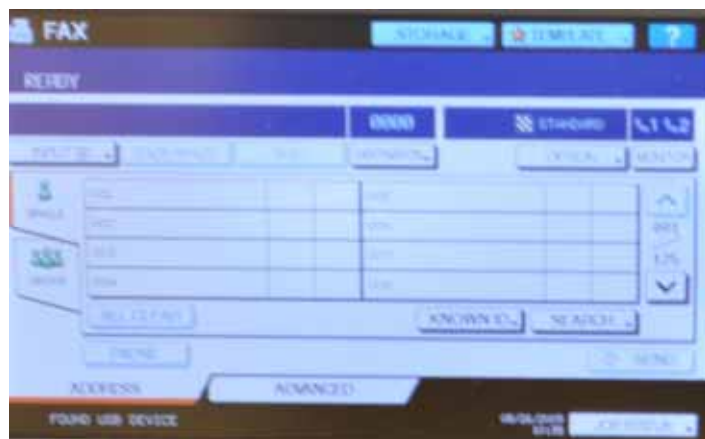
The e-Filing system has 1 Public box and 200 private user boxes in which can electronically store up to 400 documents pre folder for on-demand reprinting



In the Scan screen users have the option to scan to the following destinations; e-Filing, File/USB, Scan-to-Email and WS Scanning.



In the Print options screen users have the ability to view submitted print jobs and reset jobs.



Users can send faxes with a Super 3G fax modem with a transmission speed of approximately three seconds per page. Memory transmission has up to 1,000 destinations.



Users can take and print files with them instantly by scanning to and printing from USB flash drives. This port is located on the front and left of the control panel.

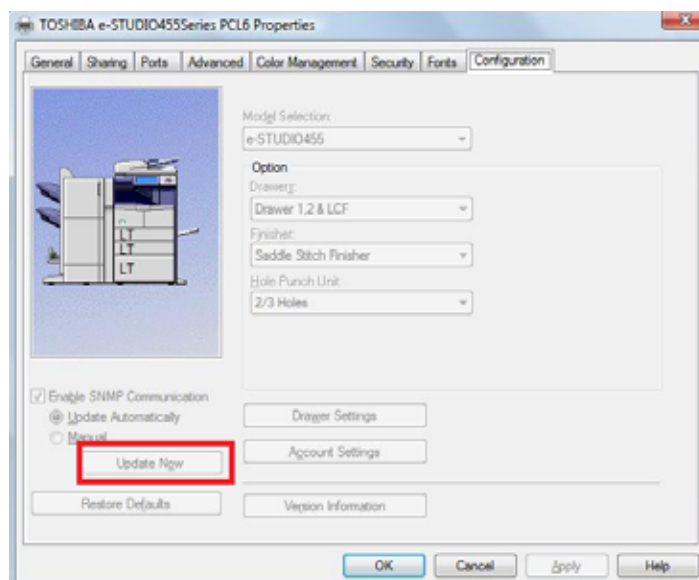
PCL AND POSTSCRIPT DRIVERS

As with control panels and touch screens, print-driver design can vary enormously from manufacturer-to-manufacturer. Toshiba has made it a simple process with their design of the PostScript and PCL drivers. The drivers are the same as other Toshiba device drivers, which will make it especially easy for Toshiba users to quickly acclimate to it.

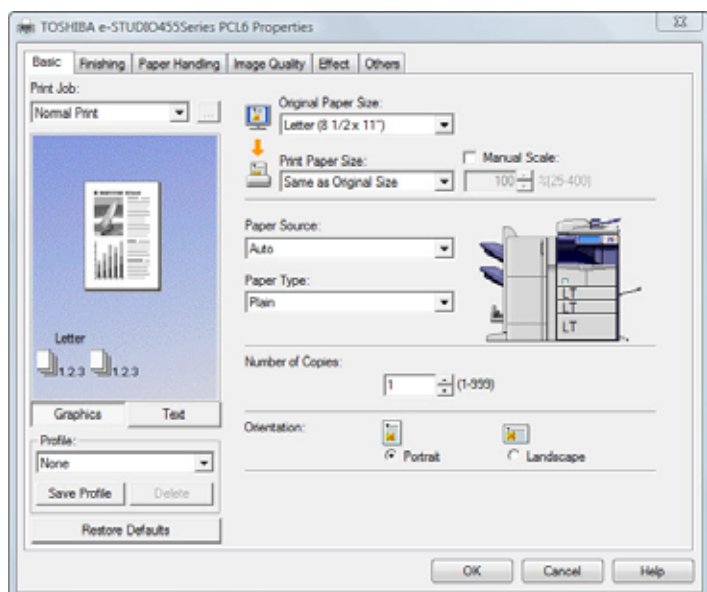
Print-Driver Checklist

Do print drivers have identical user interfaces?	Yes
Are print drivers interfaces identical to other models from this vendor?	Yes
Bidirectional communication within print drivers?	Yes
Auto device configuration from within print driver?	Yes
Does print-driver installation require rebooting of the workstation?	No
Are print-driver deployment processes included?	Yes
Are print-driver deployment guidelines and procedures included?	Yes

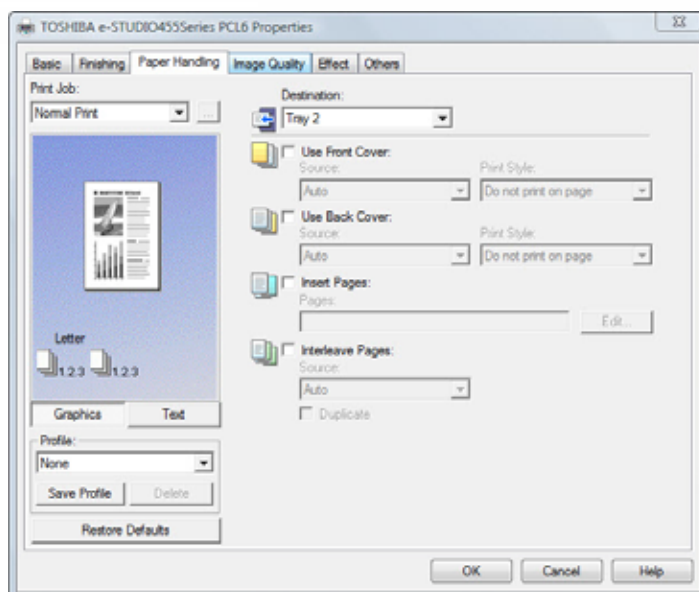
PCL6 PRINT DRIVER



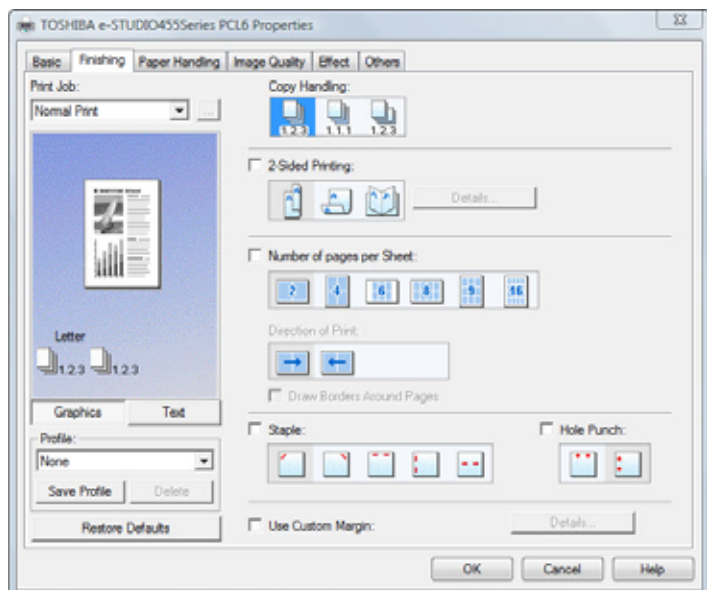
In order to specify which options have been installed, as well as specify system defaults, administrators first access the "Printers and Faxes" folder via the Microsoft Windows' Start menu, and then select the e-Studio455 PCL or PostScript driver. Administrators can "manually" specify which options are installed, or they may simply enable "Update Now" between the device, and the driver automatically indicating the options shown above are available for use.



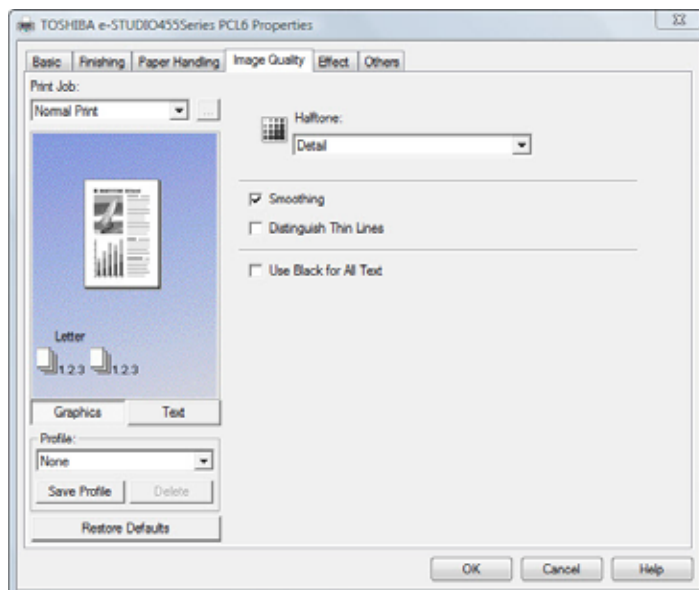
The driver's first tab, Basic, contains basic print operation settings, such as original paper size, print paper size, paper source, paper type, orientation, and number of copies. The Image on the on the left side indicates the currently selected options.



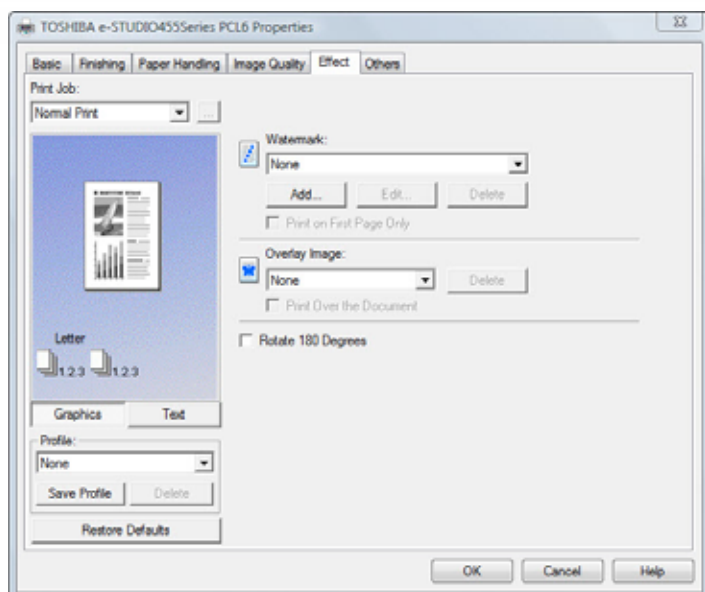
The Paper Handling tab on the e-STUDIO455 provides several options to enable Front Cover printing, Back Cover printing, Inserting Pages, and Interleaving Pages.



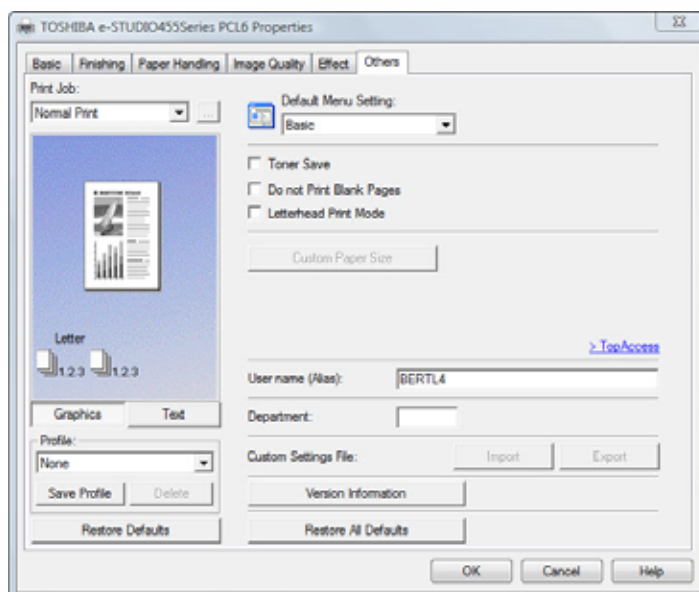
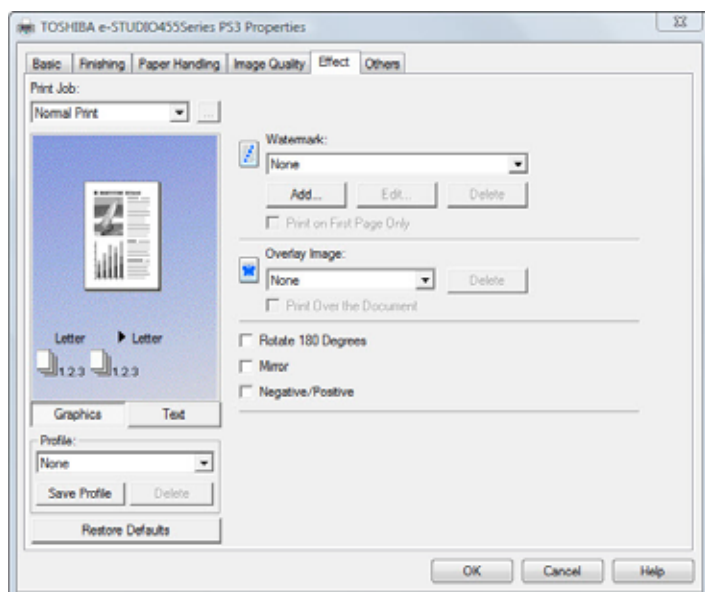
The Finishing tab allows users to enable sort printing, 2-sided printing, N-up printing, stapling and punching.



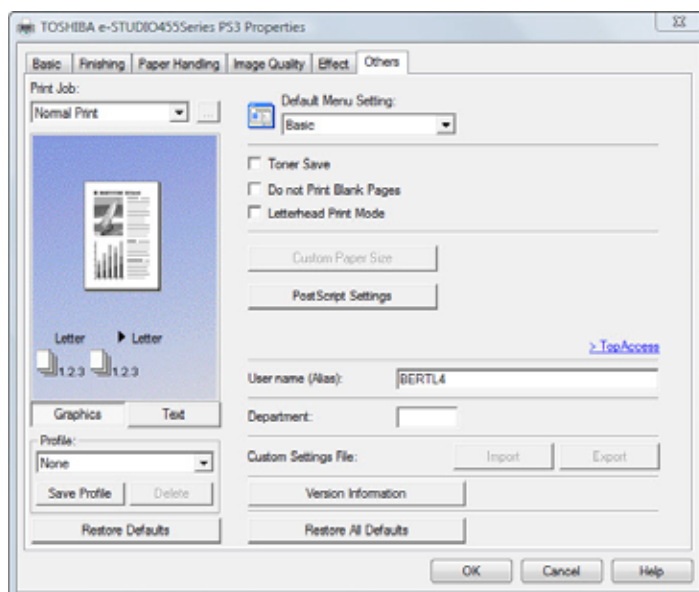
The Image Quality tab allows users to select how images are printed. Users can easily select the appropriate image quality depending on the type of document being printed out.



Above and below: The Effect tab contains print options that add effects to your print jobs such as Watermarks, Overlay Image printing, and Rotate printing. The PostScript drivers added features are Mirror and Negative/Positive.



Above and below: The Others tab contains print options such as Toner Saving, Do not Print Blank Pages and custom paper sizes. PostScript s added feature has PostScript settings that allow users to print error information, enable compress bitmap and use PostScript pass through.



MAINTENANCE

The Toshiba e-STUDIO455 displays animated, step-by-step instructions for routine tasks, such as clearing paper misfeeds or replacing toner. BERTL found these animated screens very helpful when performing these routine maintenance tasks.

The e-STUDIO455 uses 5 Service Modules (Fuser, Transport Belt, Drum, Charge Corona and Developer Unit). By utilizing these modules, a routine PM can be performed in minutes, effectively changing out all of the items that affect image quality. These modules then can be taken back to service and rebuilt in a controlled environment eliminating any downtime for the user. This is good for the customer since they can get a PM done quickly, getting the MFP back to work and alleviating less pressure for a dealer since they will not have to send a specialist to a customer site having them tied up rebuilding the modules.

Maintenance Checklist	
Load ink/toner while running?	No
Requires rear access for access to maintenance items?	No
Requires side access for access to maintenance items such as toner cartridge?	No
All-in-one imaging units?	No
User-disposable waste item(s)?	No

ROUTINE MAINTENANCE—REPLACING TONER

Below and next column: In order to replace the e-STUDIO455's toner, the user must first open the front panel door. Once open, the user can then replace the toner bottle by pushing the green lever downwards and sliding the unit out. BERTL found replacing the toner cartridge to be very easy.



MISFEED ACCESS



The document feeder's misfeed access area is accessed by lifting up the RADF cover.



To clear misfeeds in the bridge unit, the user pushes down on this lever and removes any jammed paper.



All misfeeds can be easily cleared from the automatic duplexing unit by lowering the right side panel door.



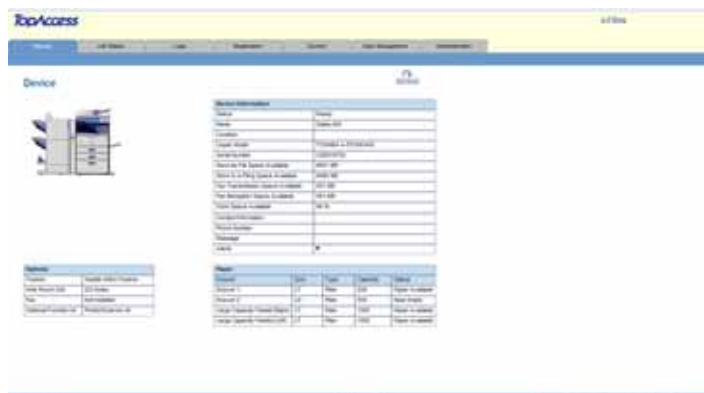
The e-STUDIO455 as shown above has two paper transport misfeed areas.



When a finisher is attached all misfeeds can be cleared by opening the finisher door and following the animated instructions on the control panel or panel door.

CLIENT UTILITIES AND DEVICE MANAGEMENT

In order to take the best and most efficient advantage of a device and its capabilities, as well as ensure maximum uptime, clients need an efficient way to access and monitor the device. Toshiba offers many features and options to help productivity for all users.



Users and administrators can view device settings and manage jobs using Toshiba's Web-based TopAccess management system. TopAccess provides a quick view of current device status, toner levels, installed paper sizes and media tray conditions and availability.

TopAccess a3 01/04

Home Log On Log Off Logout Log On Logout Log On Logout Log On Logout


Plan Counts

Plan	Count	Plan	Count	Plan	Count
Plan 1	100	Plan 2	10	Plan 3	10
Plan 1	100	Plan 2	10	Plan 3	10
Plan 1	100	Plan 2	10	Plan 3	10

Run Counts

Run	Count	Run	Count
Run 1	10	Run 2	10
Run 1	10	Run 2	10
Run 1	10	Run 2	10


TopAccess Internet Services provides detailed billing information and total impression counts.


TopAccess
4/2/2014

[Home](#)
[Join Email](#)
[Login](#)
[Registration](#)
[License](#)
[Site Management](#)
[Help/Support](#)

[Home](#)
[Registration](#)
[License](#)
[Site](#)

[Print Log](#)



Item Name	Accessed Date	Access Type	Type	Project	Pages	URL
00001	4/1/2014 11:59:59	Read	Read	17	1	1
00002	Access ID	00000000-1100-00	Read	17	1	1
00003	Access ID	00000000-1100-00	Read	17	1	1
00004	Access ID	00000000-1100-00	Read	17	1	1
00005	Access ID	00000000-1100-00	Read	17	1	1
00006	Access ID	00000000-1100-00	Read	17	1	1
00007	Access ID	00000000-1100-00	Read	17	1	1
00008	Access ID	00000000-1100-00	Read	17	1	1
00009	Access ID	00000000-1100-00	Read	17	1	1
00010	Access ID	00000000-1100-00	Read	17	1	1
00011	Access ID	00000000-1100-00	Read	17	1	1
00012	Access ID	00000000-1100-00	Read	17	1	1
00013	Access ID	00000000-1100-00	Read	17	1	1
00014	Access ID	00000000-1100-00	Read	17	1	1
00015	Access ID	00000000-1100-00	Read	17	1	1
00016	Access ID	00000000-1100-00	Read	17	1	1
00017	Access ID	00000000-1100-00	Read	17	1	1
00018	Access ID	00000000-1100-00	Read	17	1	1
00019	Access ID	00000000-1100-00	Read	17	1	1
00020	Access ID	00000000-1100-00	Read	17	1	1
00021	Access ID	00000000-1100-00	Read	17	1	1
00022	Access ID	00000000-1100-00	Read	17	1	1
00023	Access ID	00000000-1100-00	Read	17	1	1
00024	Access ID	00000000-1100-00	Read	17	1	1
00025	Access ID	00000000-1100-00	Read	17	1	1
00026	Access ID	00000000-1100-00	Read	17	1	1
00027	Access ID	00000000-1100-00	Read	17	1	1
00028	Access ID	00000000-1100-00	Read	17	1	1
00029	Access ID	00000000-1100-00	Read	17	1	1
00030	Access ID	00000000-1100-00	Read	17	1	1
00031	Access ID	00000000-1100-00	Read	17	1	1
00032	Access ID	00000000-1100-00	Read	17	1	1
00033	Access ID	00000000-1100-00	Read	17	1	1
00034	Access ID	00000000-1100-00	Read	17	1	1
00035	Access ID	00000000-1100-00	Read	17	1	1
00036	Access ID	00000000-1100-00	Read	17	1	1
00037	Access ID	00000000-1100-00	Read	17	1	1
00038	Access ID	00000000-1100-00	Read	17	1	1
00039	Access ID	00000000-1100-00	Read	17	1	1
00040	Access ID	00000000-1100-00	Read	17	1	1
00041	Access ID	00000000-1100-00	Read	17	1	1
00042	Access ID	00000000-1100-00	Read	17	1	1
00043	Access ID	00000000-1100-00	Read	17	1	1
00044	Access ID	00000000-1100-00	Read	17	1	1
00045	Access ID	00000000-1100-00	Read	17	1	1
00046	Access ID	00000000-1100-00	Read	17	1	1
00047	Access ID	00000000-1100-00	Read	17	1	1
00048	Access ID	00000000-1100-00	Read	17	1	1
00049	Access ID	00000000-1100-00	Read	17	1	1
0						

With TopAccess administrators can display logs of print jobs, fax transmissions, and Scan Job Logs performed on the e-STUDIO455. The log can be exported to the desktop for further evaluation by Excel or other cost accounting applications.

[illegible]

With TopAccess, users can easily set up job scan templates from the desktop. These templates will translate to a one-touch scan button on the unit's control panel. Instructions walk users through the process. Even multi-step functions were relatively simple to follow without a manual or online help. Templates can be stored in a public or private folder. Each user can have a private folder locked with a PIN so they can store scan to e-mail, fax, or folder templates in their own folder for fast retrieval rather than filtering through the shared address book.



The screenshot shows the TopAccess web application interface. The header is yellow with the 'TopAccess' logo on the left and 'v1.0.0' on the right. Below the header is a navigation bar with links: Home, Add Users, Add, Add Groups, Search, User Management, and Administration. The main content area has a blue header with the title 'Address Book'. Below this is a search bar with the text 'John Smith' and a 'Search' button. Under the search bar, there is a table with the following data:

No	Name	Actual Address	Fax Number
1	John Smith	1234 Main St, New York, NY 10001	212-555-1234

Users have the ability to log on to the TopAccess Internet Services, register a new contact, and enter their e-mail address, fax number, company name, and department code directly from the Web interface. Once created, users can easily lookup and select the contact from the address book so they can conveniently send a fax, e-mail or a scan.

[illegible]

Administrators can modify the device's printer default settings and enable or disable the device to automatically print duplex mode, print startup pages, and set other basic print defaults.



An administrator can set up to three e-mail addresses to route specific notifications. Some other advanced systems offer unlimited e-mail addresses, but the TopAccess option is probably more than adequate for most environments. The administrator can set up a local office contact for easy fixes such as media and toner refill. More complex technical issues can be routed to tech support. E-mails automatically can be sent to the dealer for tasks like imaging drum replacement.



Toshiba also provides several document management software solutions some of which include e-Bridge, Re-Search, DocRecord and DocuWare.

Some of these document management solutions are used as workgroup document repositories with searching, indexing, retrieval, and other baseline document management and records management capabilities.

Toshiba also provides a host of solutions for document output management, as well as solutions for tracking, measuring, and monitoring document output from the e-STUDIO455. Some of the solutions also provide security features and functions that prevent unauthorized access.



Toshiba offers several integration options with many of today's most popular document capture / workflow solution providers. Sample products include Re-Rite, eCopy, e-BRIDGE Sharepoint and Open Platform Exchange.

- Both PCL6 and PostScript drivers are relatively easy to use and logically organized. Both drivers have nearly the same exact user interface. This will enable users to quickly and easily switch between drivers and allow them to find the settings they need from one driver to another with ease.
- Both print drivers provide bi-directional communication, so users can quickly check device and consumables' status.
- Very easy toner and paper replacement.
- Misfeed-access areas are easy to locate and access. Correcting paper jams can be easily accomplished by following the step by step guide displayed on the control panel.
- Scanning and printing documents directly into and from a USB stick was very easy using the front USB port.

WHAT WE WOULD LIKE TO SEE

- BERTL believes administrators and users will find the Toshiba e-STUDIO455 exceptionally easy to use.

WHAT WE LIKED

- The control panel's hard keys are large, well-organized and clearly labeled, while the 8.5" WVGA touch screen features large text for easy viewing, as well as a simple design for easy navigation.
- The color touch screen provides easy access to several common and frequently used copier settings on the Basic Copying screen. This enables copy users to quickly and easily make typical settings without having to navigate through to many sub-menus, and significantly reduces the time to make copy-job settings. BERTL was able to make frequently used copier settings in a matter of only 2 key presses (see "Selections Required for Frequently Used Copy Functions" chart on page 12).
- For network and device management, Toshiba provides its TopAccess Web Software Suite. TopAccess Internet Services provides an easy-to-use Web-based interface, and can be used to view detailed system and consumables' status. It also enables administrators to manage and configure device and network settings. This Web-based solution enables administrators to monitor and manage a fleet of devices from any workstation on the network.
- TopAccess Web-based interface provides automatic e-mail alerts when the system requires attention.
- Features Toshiba's third generation e-BRIDGE controller with Open Platform architecture. This technology allows third-party software applications, such as Microsoft SharePoint and Exchange, to integrate directly with the e-STUDIO device.

MEDIA INPUT

The Toshiba e-STUDIO455 comes standard with two 550-sheet drawers and a 100-sheet stack feed bypass tray. For high-volume printing, a 2,000-sheet Large Capacity Feeder (LCF) option increases the total capacity to 3,200 sheets. A wide range of paper sizes and weights are supported. Paper sizes up to 11 x 17 inch are supported through all the trays except the LCF. Standard bond and post cards run easily with great dependability. The crown jewel of this device is its support for copying and printing on tab paper and the ability to print envelopes via bypass tray. Its capability to insert tabs into any job expands productivity for all users. Tab paper can be loaded via bypass tray and the second paper drawer. A tab sheet holder comes standard with every MFP.

Media Handling Checklist	
Minimum/Maximum Media Weight	550-sheet drawer (17lbs – 28lbs), Bypass (17lbs - 110lbs), LCF (17lbs – 28lbs)
Feeds maximum media weight from all sources?	No
Finisher	Yes
Hole Punch	Yes
Saddle Stitch	Yes



The Toshiba e-STUDIO455 shown here is equipped with two standard 550-sheet cassettes and an optional 2,000-sheet LCF.

LOADING MEDIA

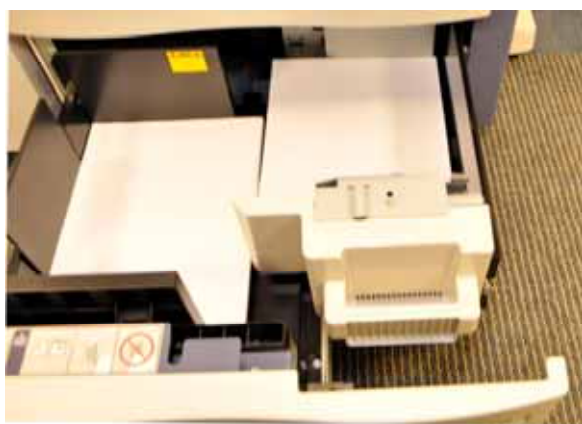
Media Loading Checklist	
Drop-in loading of a full ream of paper?	Yes
Spring-loaded ramps in paper trays?	Yes
Geared media size side guides?	No
Captured rear media guide?	No
Automatic paper size detection?	No



The 100-sheet bypass tray can be adjusted by sliding these levers into place. The feeder can be adjusted for envelope and tab printing.



Above and next column: In order to adjust the paper cassettes to accommodate different paper sizes, the user squeezes and slides these green guides into place. BERTL found it easy to adjust the paper cassettes.



The Large Capacity Feeder can hold up to 2,000 letter sized sheets. User can load paper during operation eliminating workflow interruption.

MEDIA OUTPUT AND FINISHING

Finishing Options	Job Separator; Work Tray; Bridge Kit for Finisher; 50-Sheet Staple Hanging Finisher; Saddle-Stitch Finisher; 50-Sheet Staple Console Finisher; 2 or 3 Hole Punch Unit for MJ1024; 2 or 3 Hole Punch Unit for MJ1101
Additional Paper Options	550-Sheet Paper Feed Pedestal 2,000-Sheet Large Capacity Feeder 550-Sheet Paper Feed Unit
Connectivity/Security Options	Fax Kit; 2 nd Line Fax; Data Overwrite Kit; IPsec Enabler; Wireless LAN Adapter; Bluetooth Module; antenna; Meta Scan Enabler; External Interface Enabler; Advanced Scanning
Miscellaneous Options	Smart Card HID; Smart Card Mifare; Accessible Arm Handle; Harness Kit for Coin Controller



The Toshiba e-STUDIO455 optional saddle stitch finisher can staple, saddle stitch and sort print jobs.

WHAT WE LIKED

- 100-sheet bypass tray is easily adjusted to accommodate different paper sizes including envelopes and supports tab printing.
- Paper capacity can be expanded up to 3,200 sheets for longer uninterrupted operation.
- Large Capacity Feeder can be opened and refilled during operation to eliminate workflow interruption.
- Easy to adjust and fill all paper cassettes.
- Finisher provides advanced finishing options such as stapling, booklet making, saddle stitching, etc.
- Versatile media handling and flexibility, with the ability to print on stock as heavy as 110lb (bypass tray) and paper sizes up to 11"x 17".

WHAT WE WOULD LIKE TO SEE

- BERTL was very satisfied with the Toshiba e-STUDIO455's media-handling capabilities.

Toshiba has done an excellent job with the design their e-STUDIO205L/255/305/355/455series. During BERTL's extensive testing of the Toshiba e-STUDIO455, this office-monochrome, toner-based MFP designed for mid-size to large workgroups performed exceptionally well. BERTL observed the following when testing the Toshiba e-STUDIO455:

- Tested simplex network-print speed with the PostScript driver was as fast as 44.6 ppm, closely matching Toshiba's rated speed of 45 ppm.
- Tested simplex network-print speed with the PCL6 driver was as fast as 44.6 ppm.
- Tested duplex network-printer productivity was extremely productive up to 44.5 ppm with the PostScript driver and 44.2 ppm with the PCL6 driver.
- Tested total copy time in simplex mode was 45.7 cpm; matching Toshiba's rated copy speed of up to 45 ppm.
- Photo prints and business charts displayed good image quality. Good resolutions in both copier and printer modes.
- Various Scan-to functions let users share information at the touch of a button. These include Scan-to-Email for rapid delivery, Scan-to-e-Filing for automated archiving, and Scan-to-File to minimize network traffic.
- The Scan-to-USB option lets users scan documents to a USB clip drive for instant document portability. Users can also print from a USB drive.
- With internet fax users can send documents to a remote fax machine without leaving their desk.
- The e-Filing option is a repository that allows documents such as forms, brochures, etc. to be printed on demand, which can be accessed from the control panel.
- In the software department's ease-of-use, the e-STUDIO455 print drivers and software were very easy to use, and TopAccess (Toshiba's embedded web server) provides very detailed device status, configuration and consumables status for clients and administrators.
- Versatile media handling and flexibility, with the ability to print on stock as heavy as 110lbs (bypass tray) and paper sizes up to 11"x 17".
- Multiple finishing choices, including the ability to staple, fold and saddle-stitch booklets, offer additional flexibility to get jobs done quickly and cost-effectively.
- Ability to expand paper supply to up 3,200 sheets.
- Duty Cycle up to 150,000 pages per month.
- Ease of maintenance is effortless, with front-loading toner, easy misfeed access, and paper tray loading. Users can replenish paper operation to eliminate downtime.
- Vast array of efficient features and options such as secure Bluetooth short range wireless printing, automatic status notification sent to IT, facilities, or dealers, and a fax feature that includes the option of a second line.
- Toshiba's e-BRIDGE controller takes document security to the next level by featuring integrated advanced encryption standard (AES) hard disk encryption, scrambler board meeting the EAL Level 3, IPv6, IPsec, SNMPv3 and 802.1x network authentication, secure PDF scanning, optional Data Overwrite kit protecting the document workflow all the way to the network.
- e-BRIDGE open platform has enabled this device to connect to MS Exchange and MS Office SharePoint among other third-party software.
- The Toshiba 8.5" full-color WVGA control panel makes it easy to program jobs in seconds.
- The Toshiba e-STUDIO455 has superior energy and supply-saving features, which include fast warm-up and first copy out times and are Energy Star Tier Level II and RoHS compliant. In addition, 100% of the base materials for their circuit boards are halogen-free, and 100% of the solder on the boards are lead-free.

Considering the Toshiba's e-STUDIO455 outstanding overall performance in testing, great ease of use, and exceptional office-monochrome image quality, BERTL awards the Toshiba e-STUDIO455 its Four and Half-Stars *Outstanding* rating and highly recommends the device for mid-size to large offices that require a fully functional monochrome MFP.

OFFICE

About BERTL

The success of an organization depends on its ability to manage its information and assets. An effective workflow process requires the complex integration of information, devices, software and people.

IT managers, office managers, and other knowledge-management professionals need to know what digital imaging devices would best serve their specialized workflow processes.

BERTL's services are designed around this real-world framework, delivering business consumers the independent analysis and insight needed to make critical decisions about digital imaging's role in their organization.

Independent Analysis and Insight

BERTL's reports, comparative data, and strategic guides look at digital imaging through the eyes of the business user. The research examines not only the technical features, but also vertical market applications, and business benefits. The impact on worker productivity is a primary concern.

BERTL is 100 percent independent. It receives no funding from manufacturers and all product evaluations and reports are published at BERTL's own expense for its subscribers. Business users worldwide trust BERTL for objective, unbiased analysis of digital imaging systems.

BERTL Services

Reports and Star Ratings

BERTL analysts provide detailed reports on the technical and practical benefits of thousands of color and monochrome workgroup, office, graphic arts, and production devices.

Product Specifications

DataCheck Gen II provides the most current competitive data on printers, copiers, MFPs, fax devices, wide format printers, scanners, and more.

News, Interviews, and Analysis

The ITchat online magazine provides insight into the dynamics and trends of the digital imaging marketplace through interviews, feature articles, and software reviews.

BERTL Awards

BERTL analysts recognize the leading devices and software solutions in the annual BERTL's Best awards. BERTL also honors the performance of manufacturers in the annual Readers' Choice selections.

Contact BERTL

BERTL Inc.
363 Route 46 West, Suite 100
Fairfield, NJ 07004
Phone: 1-973-882-0200
Fax: 1-973-882-0201
Email: info@bertl.com
www.BERTL.com