

# Multi Station Print

## Highlight Feature

---

- > A serverless printing solution that allows you to print from any of up to ten MFPs within your network.
- > Make last-minute changes to your print job directly at the MFP or re-print previous jobs.
- > Save valuable resources by reducing time to print as well as server maintenance costs.



### Your challenge

You urgently need to print some documents, but when you walk up to the MFP, you see that the system is busy with someone else's large print job. You lose valuable time because you have to return to your desk, delete the original print job and send a new one to another MFP before you can collect it.

### Our solution

Toshiba's e-BRIDGE Next systems come with the "Multi Station Print" option. This solution allows you to collect your print job from any of up to ten different MFPs within your network, irrespective of which MFP you sent it to. And all this without having to install a server.

With Multi Station Print you can also change the printer settings at the MFP itself before releasing the print job. This allows you to quickly modify settings, without having to re-send the print job.

## MULTI STATION PRINT

### Your benefits

The Multi Station Print feature is a serverless printing solution that saves you time and resources. Not only do you save the cost of installing and maintaining a server, your office will also benefit in many other ways.

This solution allows you to release your print job at up to any of ten MFPs within your network, irrespective of which MFP it was originally sent to. Simply authenticate at the MFP of your choice - either by card or pin - to collect your documents. If necessary, you can even make some last-minute changes to the print settings directly at the MFP itself or simply re-print documents without having to re-send them. This saves you time and reduces print waste. Plus, your documents are safe as they cannot be printed without you first authenticating at a MFP.

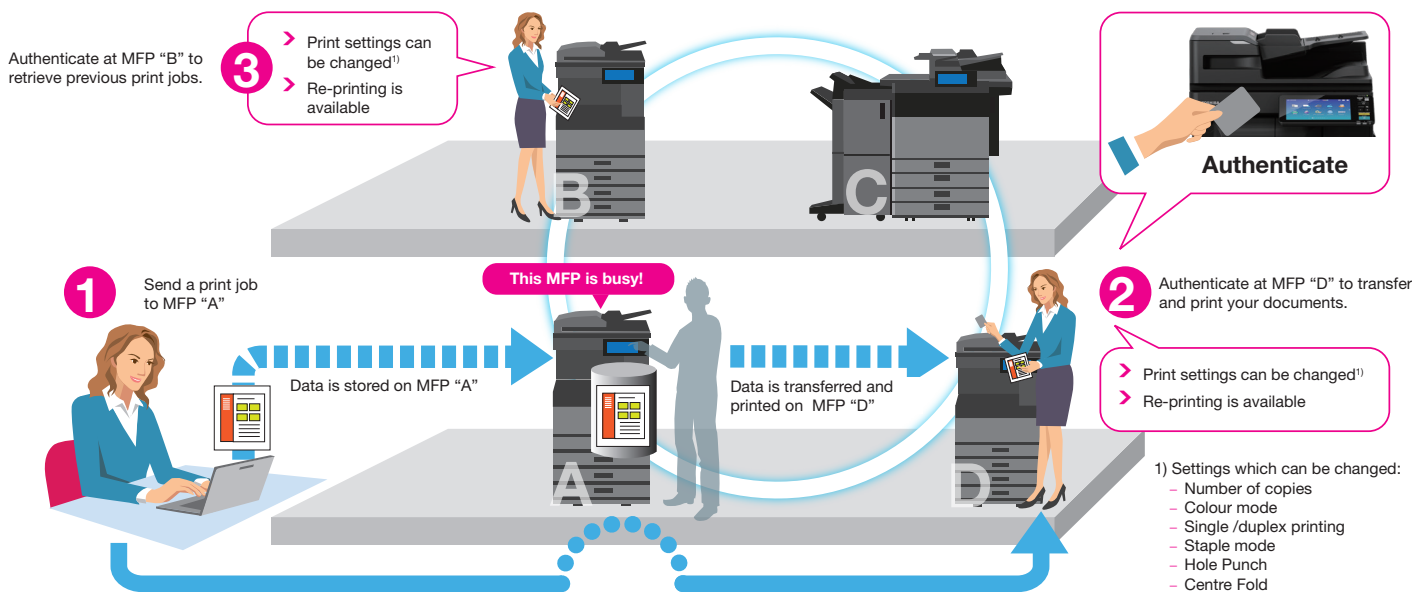
Multi Station Print does not require a special server and is easy to install, ensuring that user information and address books from one MFP can easily be cloned to others.

### Where to use

The Multi Station Print feature is an ideal solution for businesses and offices in which users share multiple MFPs.

- > Education
  - Increased efficiency as users don't have to wait when an MFP is busy
- > Government
  - Sharing devices among different departments helps optimise the print fleet
  - Document security is assured thanks to the need to authenticate before releasing a print job.
- > General office
  - Optimised usage of installed MFPs increases value for money ratio
  - Lower printing and paper cost as errors while printing are reduced

The Multi Station Print feature optimises the use of MFPs and increases the overall efficiency.



For more information and a complete list of MFPs with this feature please contact us:

**TOSHIBA (Australia) Pty Limited**  
Building C, 12-24 Talavera Road,  
North Ryde. 2113. Australia  
**Tel:** 1300 794 202  
[www.toshiba-business.com.au](http://www.toshiba-business.com.au)

**New Zealand**  
58 Lunn Avenue, Mt Wellington  
**Tel:** 09 570 8530  
[www.toshiba-business.co.nz](http://www.toshiba-business.co.nz)