



**TOSHIBA**

# ADDING A PRINT SCRIPT

PaperCut MF



## Purpose

This document will cover adding a specific print script to PaperCut MF V22.1.1 and later.

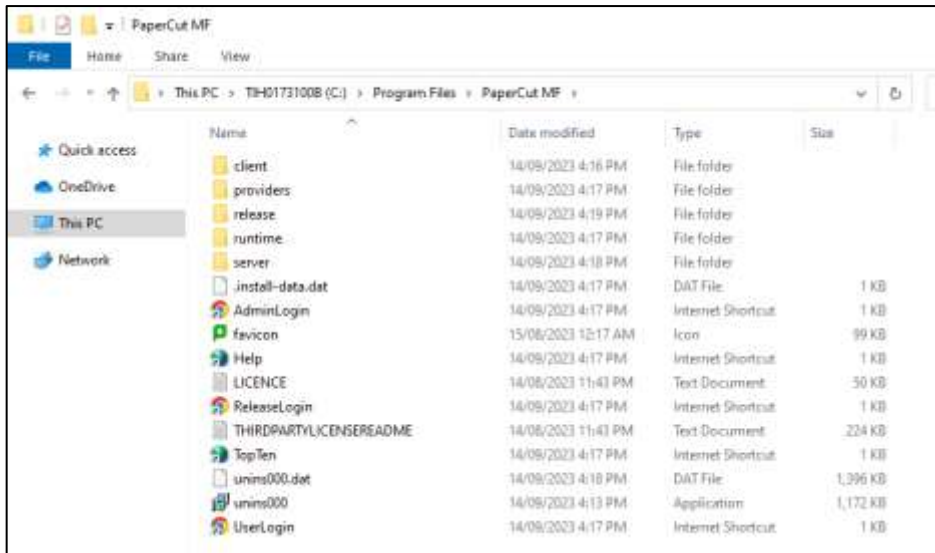
## Models Supported

e-Bridge Next Series III
Colour e-STUDIO 2020AC / 2525AC / 3025AC / 3525AC / 4525AC / 5525AC / 6525AC
Mono e-STUDIO 2528A / 5528A / 6528A / 7529A / 9029A
e-Bridge Next Series II
Colour e-STUDIO 330AC / 400AC e-STUDIO 2010AC / 2515AC / 3015AC / 3515AC / 4515AC / 5015AC / 5516AC / 6516AC / 7516AC
Mono e-STUDIO 2518A / 5518A / 7518A / 8518A
e-Bridge Next Series I
Colour e-STUDIO 2000AC / 2505AC / 3005AC / 3505AC / 4505AC / 5005AC / 5506AC / 6506AC / 7506AC
Mono e-STUDIO 2508A / 3508A / 4508A 3508LP / 4508LP / 5508A / 7508A / 8508A

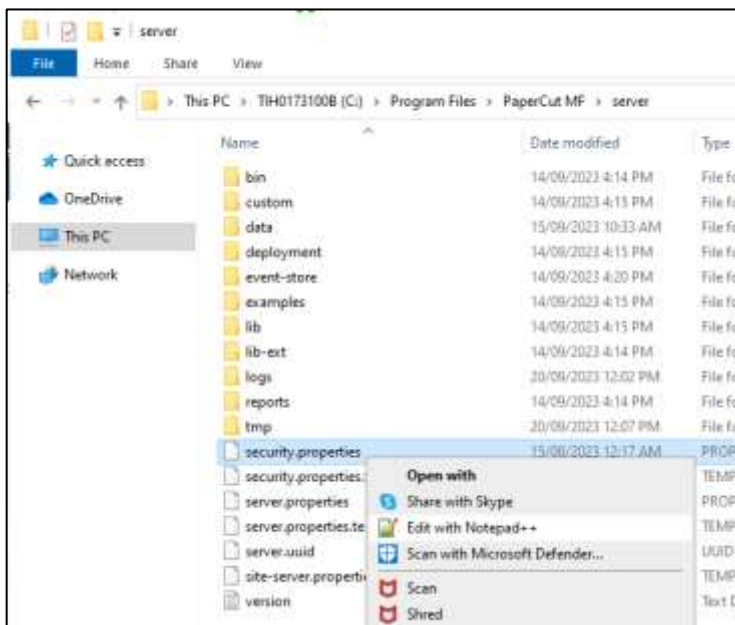
# Adding a print script to PaperCut

## Updating the security.properties file

1. From the PaperCut Application server, go to the PaperCut Install folder



2. Open the "server" sub-folder and open the security.properties file



Note: Administrator privileges is required to open and edit this file.

3. Search for "security.print-and-device.script.enabled" and set it to "Y"

```

12 # Controls if print scripts and device scripts are ena
13 # Set this key to Y to allow enabling print or device
14 security.print-and-device.script.enabled=Y
15

```

4. (optional) If your script will be using extended Java classes (i.e., outside of dates, numbers and strings), then you will need to also make the additional changes below

- security.print-script.allow-unsafe-code=Y
- security.device-script.allow-unsafe-code=Y

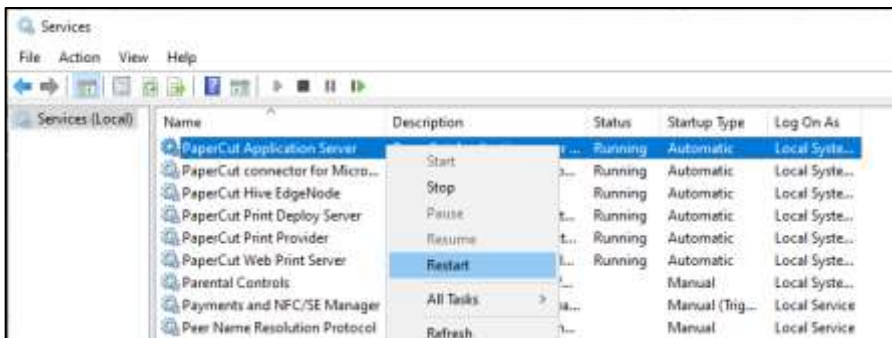
```

# Only enable the config key for the scripts you need it
security.print-script.allow-unsafe-code=Y
security.device-script.allow-unsafe-code=Y

```

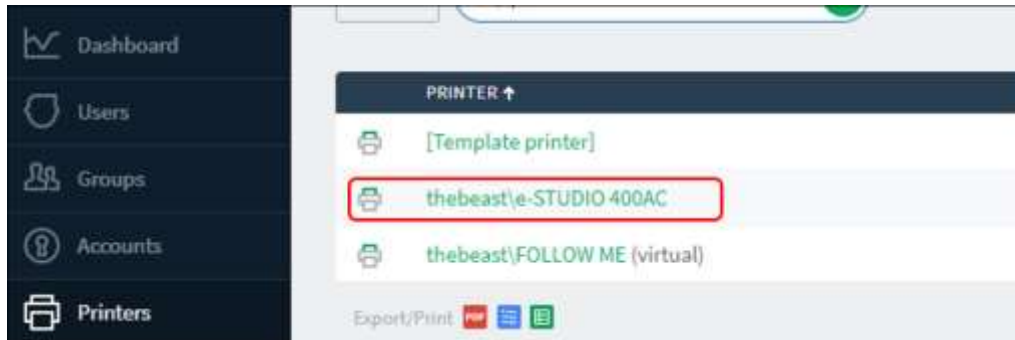
5. Save the changes

6. Restart the "PaperCut Application Server" service



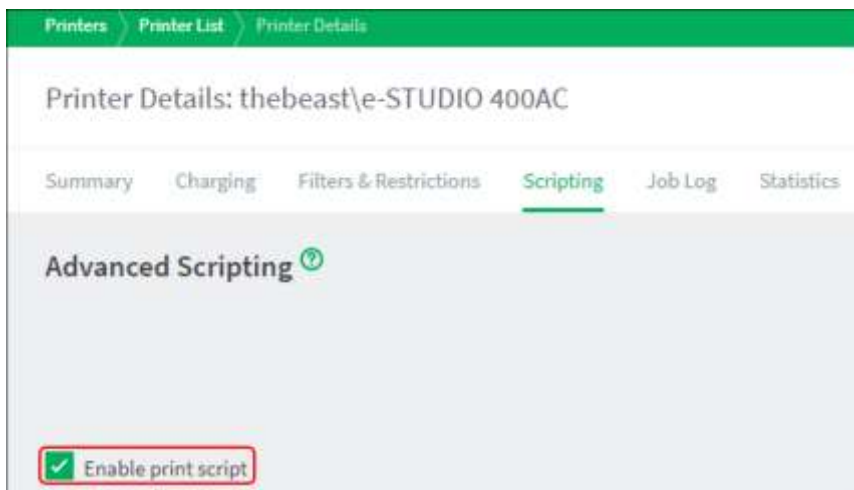
## Applying the script

1. On a browser, login to the PaperCut Web Server as an Administrator
2. Go to "Printers" and select the print queue that you would like to apply the script to

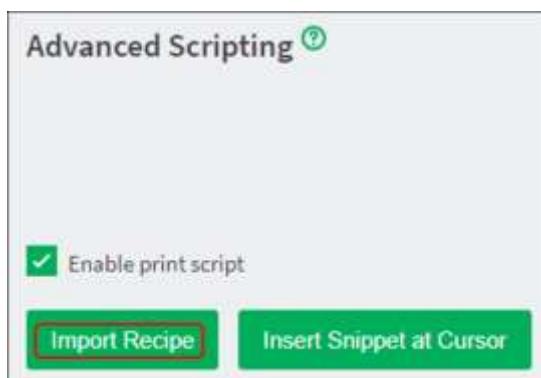


Note: Scripts can not be applied to Virtual Queues.

3. Click the "Scripting" tab and select the "Enable print script" tickbox

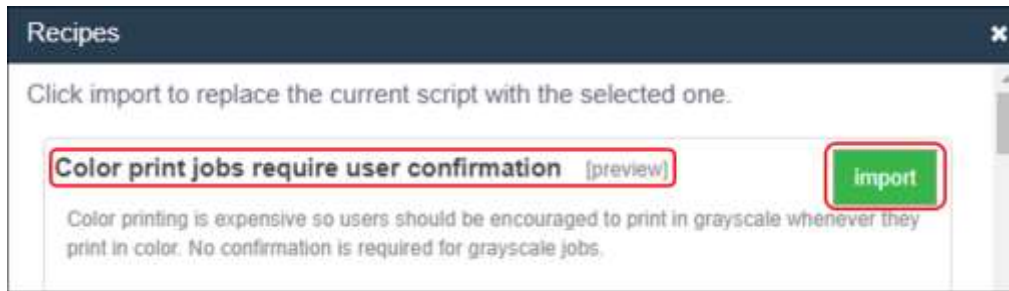


4. Click "Import Recipe"

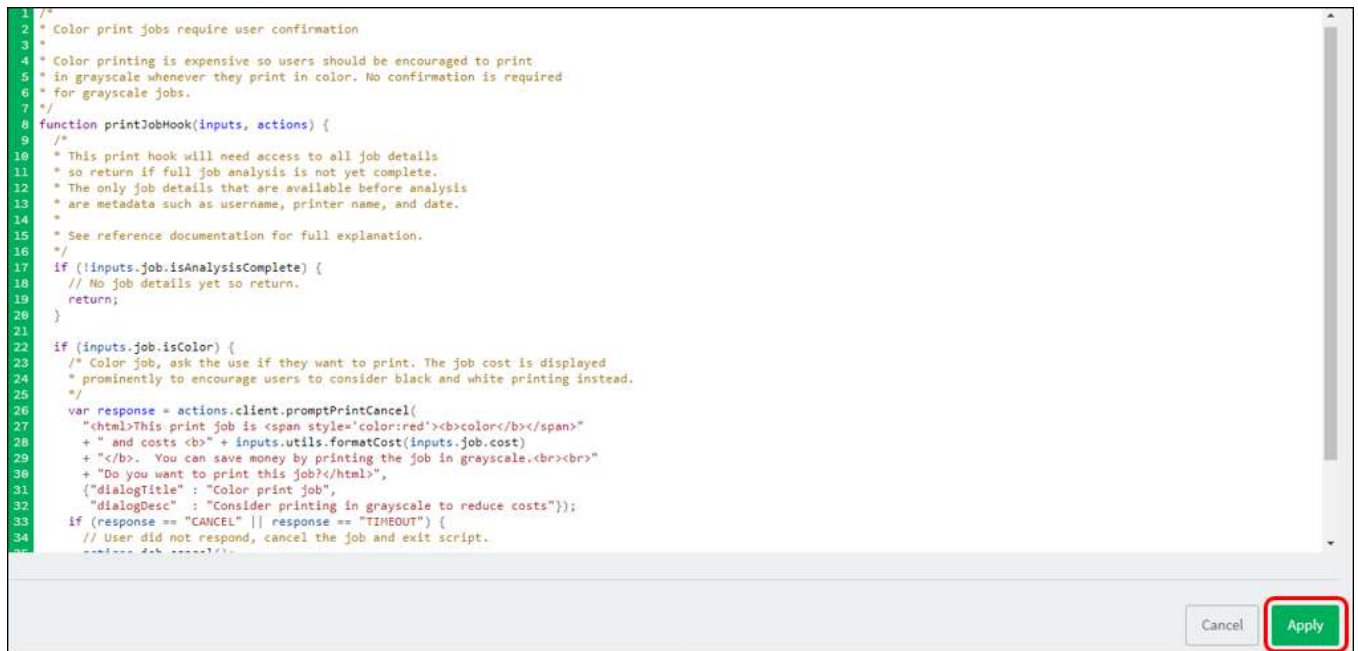


5. Select your script and click "Import".

For our example, we will be importing the "Color print jobs require user confirmation" script

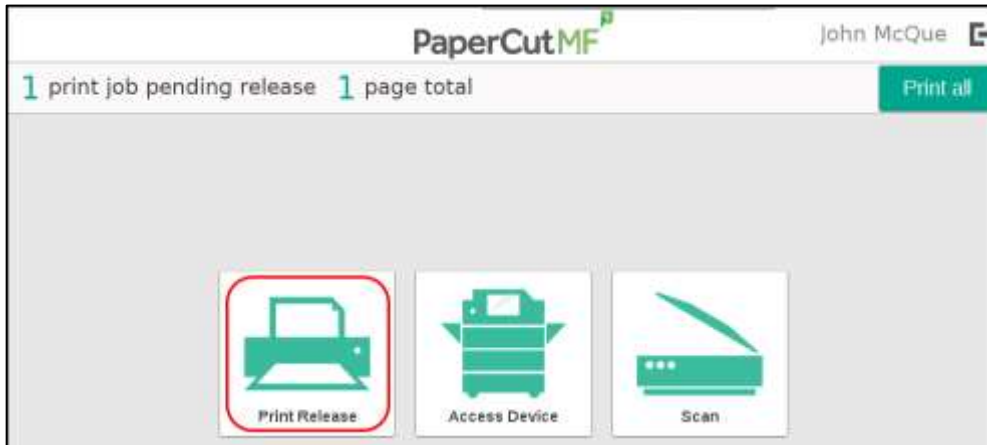


6. This will insert the script and add the feature. Click "Apply" to continue



## User Experience

1. From the Control Panel, login to your PaperCut account
2. Click on "Print Release"



**Note:** It is important that the user clicks on "Print Release" instead of "Print all" in order to use the script. If you would like to disable the "Print all" option, refer to the steps in "Removing "Print all" option"

3. You will now find additional options at the bottom of the screen to "Print as greyscale" and/or "Print as 2-sided"



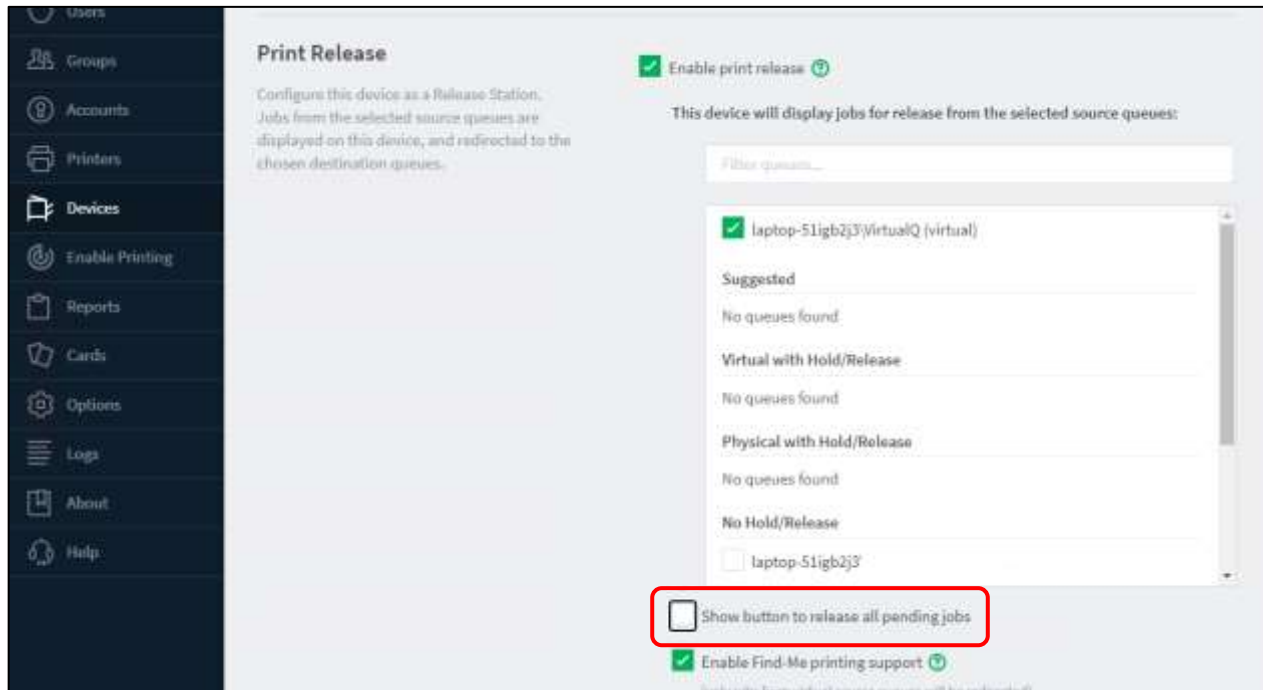
4. Select the "Print as grayscale" and print the job. Reports will also show you that your document was sent as a Colour job, but was printed in Greyscale

DATE ↓	USER	CHARGED TO	PRINTER	PAGES	COST	DOCUMENT NAME	ATTRIBS.	STATUS
May 16, 2023 6:41:24 PM	jock	jock	thebeast(e-STUDIO 400AC	1 (Color: 0)	\$0.01	Test Page	A4 (ISO_A4) Duplex: Yes Grayscale: Yes 4,493 kB JOHNS-LAPPY PostScript	Printed refund edit

## Removing "Print all" option

The steps in this procedure are optional and will remove the "Print all" button from the Print Release window on the Control Panel.

1. On a browser, login to the PaperCut Web Server as an Administrator
2. Go to "Devices" and select the device that you would like to apply the changes to
3. Scroll down to the "Print Release" section and untick the "Show button to release all pending jobs" tickbox



4. Click "OK" to save your changes