

SETUP OF SNMP V3

Ebn2 eBN3 Models



Scope of Disclosure	Public
Classification	Standard
Handling	Do not copy or transfer
Document Type	Guide

This page has been left intentionally blank

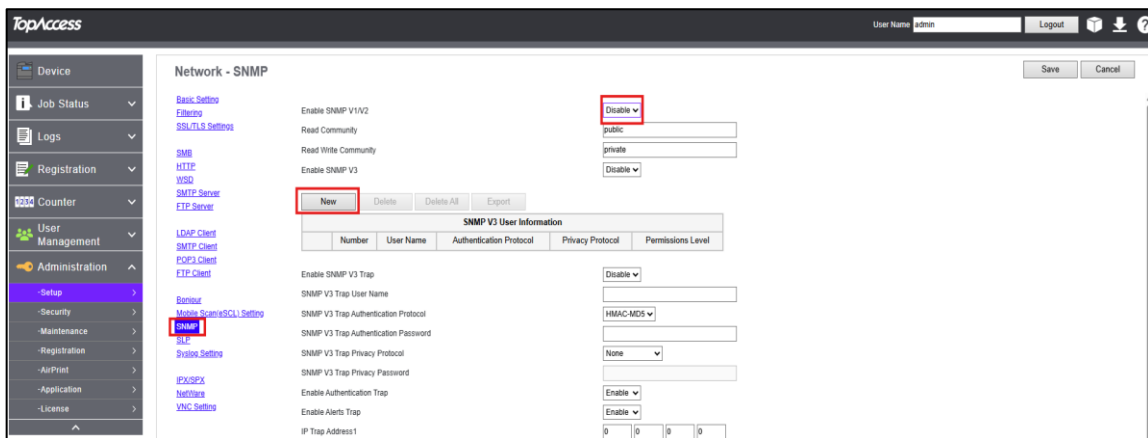
Device List

e-BRIDGE Next Series III	
Colour	
<ul style="list-style-type: none"> ▪ e-STUDIO2020AC / e-STUDIO2021AC ▪ e-STUDIO2525AC / 3025AC / 3525AC / 4525AC / 5025AC / 6525AC ▪ e-STUDIO5516AC / 6516AC / 7516AC ▪ e-STUDIO401AC / 331AC 	
Monochrome	
<ul style="list-style-type: none"> ▪ e-STUDIO2528A / 5528A / 6528A ▪ e-STUDIO7529A / 9029A 	
e-BRIDGE Next Series II	
Colour	
<ul style="list-style-type: none"> ▪ e-STUDIO2010AC ▪ e-STUDIO2515AC / 3015AC / 3515AC / 4515AC / 5015AC ▪ e-STUDIO5516AC / 6516AC / 7516AC ▪ e-STUDIO400AC / 330AC 	
Monochrome	
<ul style="list-style-type: none"> ▪ e-STUDIO2518A ▪ e-STUDIO5518A / 7518A / 8518A 	

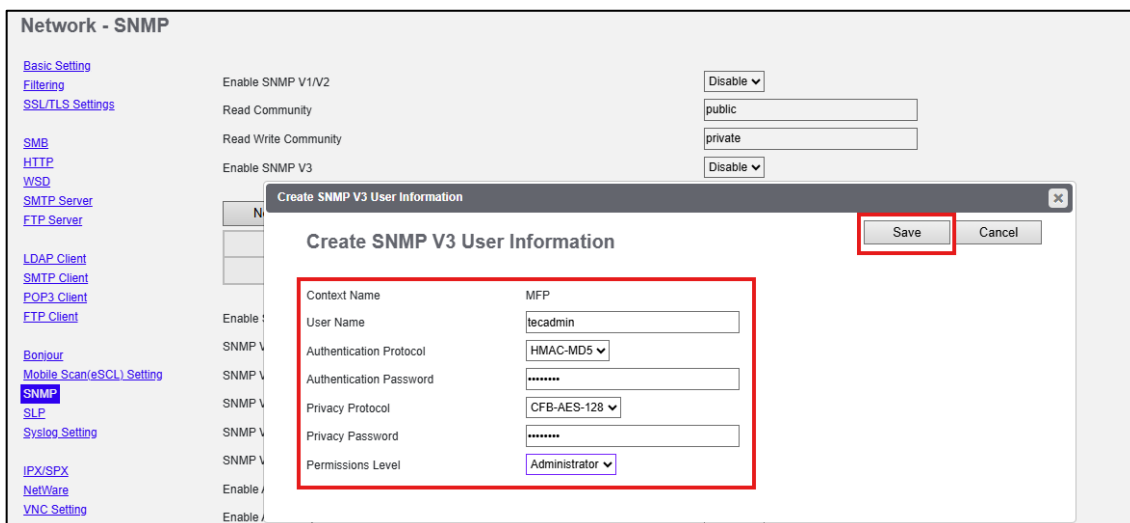
SNMP V3 Printer Driver Setup

TopAccess Setup

1. Open a web browser and enter the IP Address of the Toshiba Device
2. Log in to TopAccess
3. In Administration go to Setup→Network→SNMP
4. Disable SNMP V1/V2
5. Select New



6. Add a User Name
7. Select an Authentication Protocol by clicking the down arrow and enter an Authentication Password
8. Select a Privacy Protocol (if required) by clicking the down arrow and enter a Privacy Password
9. Select a Permission Level (Administrator or User) by clicking the down arrow
10. Click Save



11. Follow Steps 5 to 10 to add more Users
12. Enable SNMP V3 and click Save

Network - SNMP Save Cancel

[Basic Setting](#)
[Filtering](#)
[SSL/TLS Settings](#)
[SMB](#)
[HTTP](#)
[WSD](#)
[SMTP Server](#)
[FTP Server](#)
[LDAP Client](#)
[SMTP Client](#)
[POP3 Client](#)
[FTP Client](#)
[Bonjour](#)
[Mobile Scan/eSCL Setting](#)
SNMP
[SLIP](#)
[Syslog Setting](#)
[IPX/SPX](#)
[NetWare](#)
[VNC Setting](#)

Enable SNMP V1/V2

Read Community

Read Write Community

Enable SNMP V3

SNMP V3 User Information					
	Number	User Name	Authentication Protocol	Privacy Protocol	Permissions Level
<input type="checkbox"/>	1	lechadmin	HMAC-MD5	CFB-AES-128	Administrator
<input type="checkbox"/>	2	EC	HMAC-MD5	CFB-AES-128	General User

Enable SNMP V3 Trap

SNMP V3 Trap User Name

SNMP V3 Trap Authentication Protocol

SNMP V3 Trap Authentication Password

SNMP V3 Trap Privacy Protocol


SNMP V3 Trap Privacy Password

Printer Driver Setup

1. After installing the Toshiba Device driver using Standard TCP/IP
2. In Devices and Printers→Printers & scanners, select the Toshiba device
3. Select Printer Properties and the select the Device Settings tab

eS3025AC_SNMP_Test Properties

General



Location:

Comment:

Model: TOSHIBA Universal Printer 2

Features

Color: Yes Paper available:

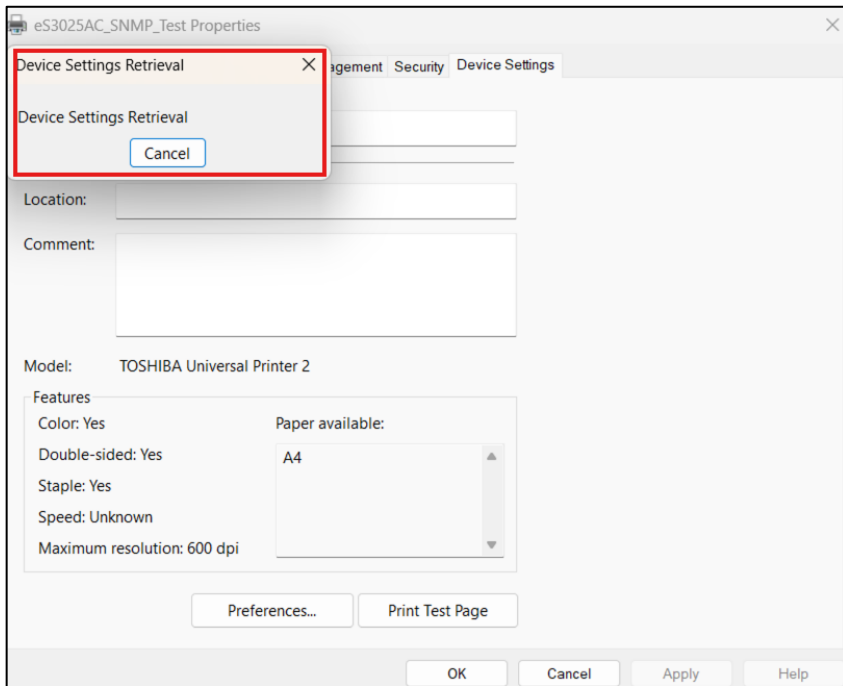
Double-sided: Yes

Staple: Yes

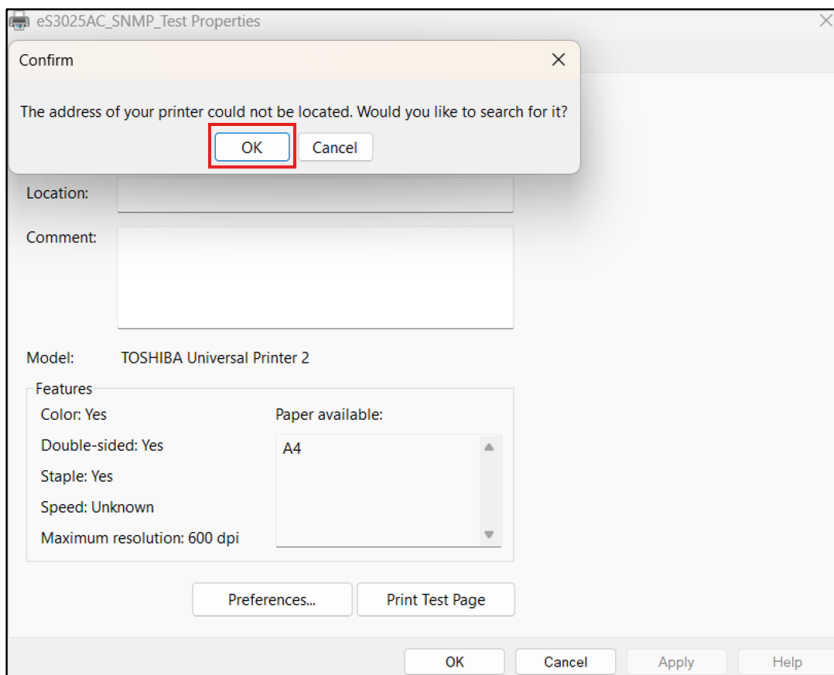
Speed: Unknown

Maximum resolution: 600 dpi

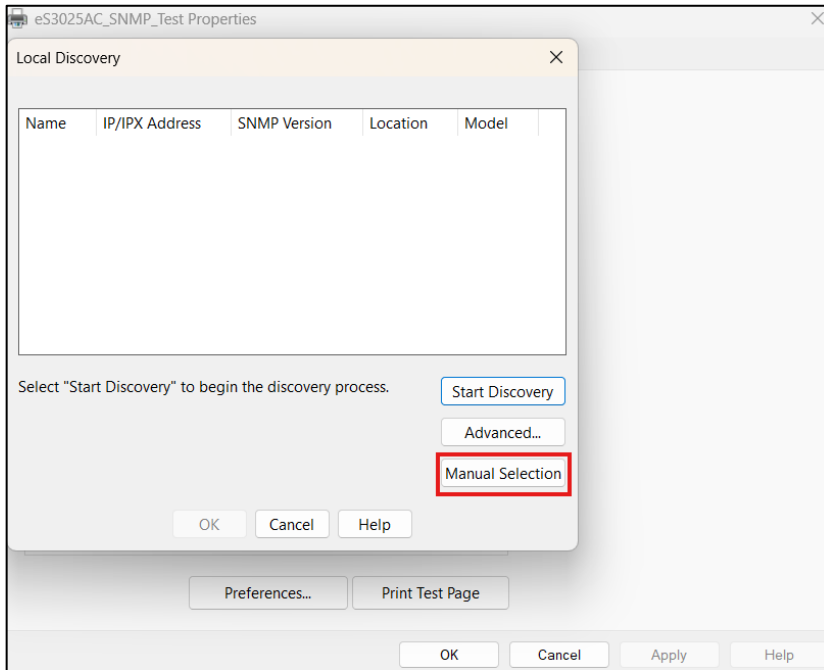
4. Device Settings Retrieval will commence



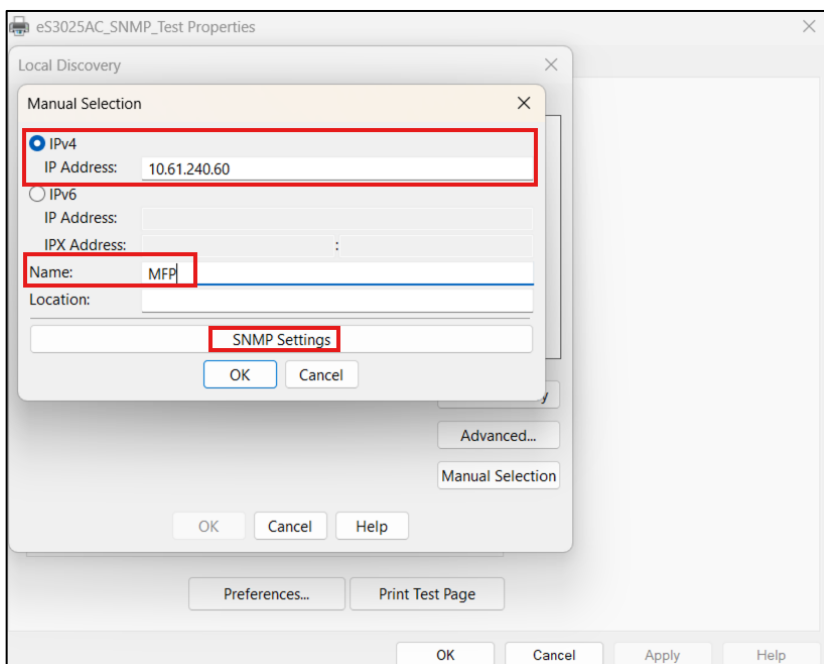
5. The Device Settings Retrieval will fail since the Toshiba device is now using SNMP V3
6. Select OK to search for the Toshiba Device



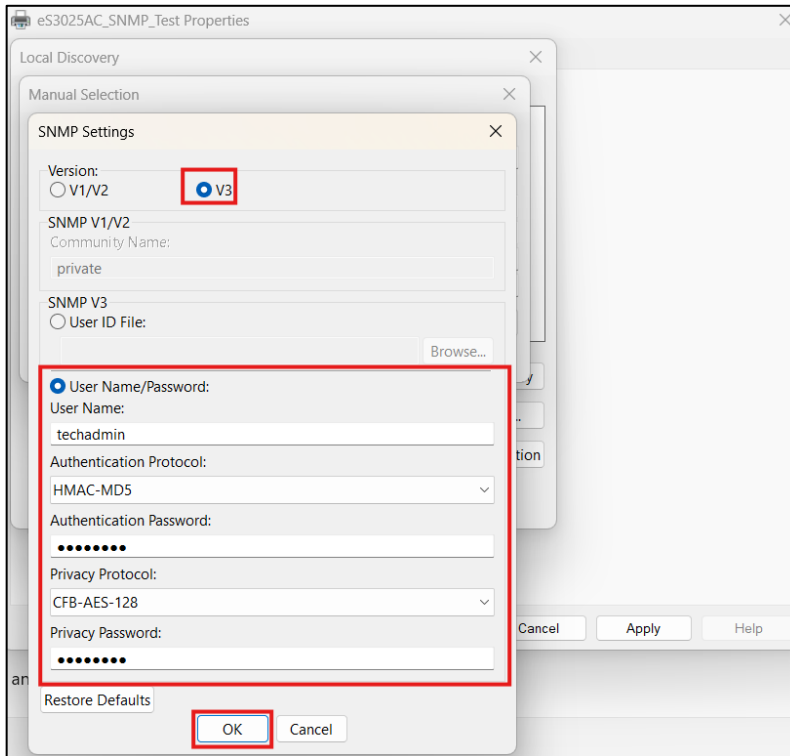
7. Select Manual Selection



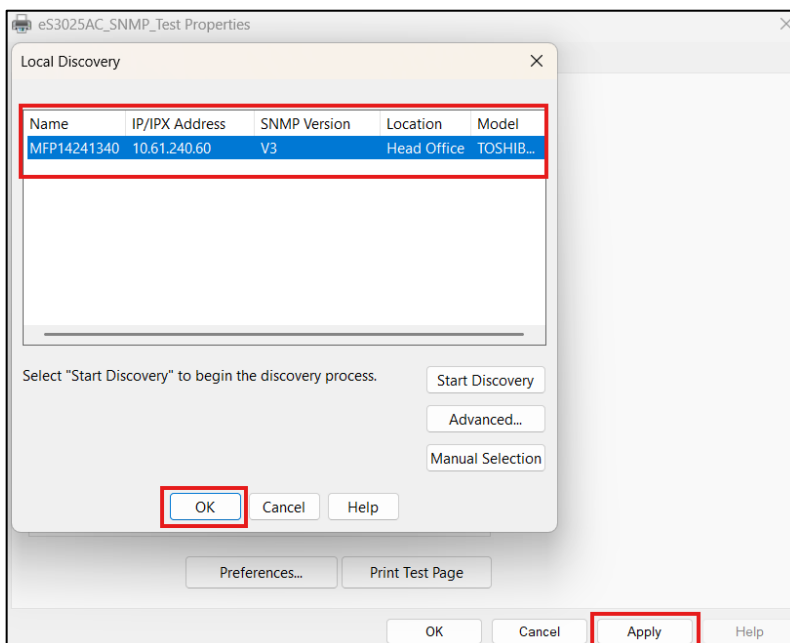
8. Enter the IP Address of the Toshiba Device, enter MFP in the Name section and select SNMP Settings



9. Select V3, then select User Name/Password and enter the User's credentials previously created in TopAccess then select OK



10. After Discover, select the Toshiba Device on SNMP V3, Select OK and select Apply when the Local Discovery screen closes



11. Repeat the Driver Setup on other Users PC