



**TOSHIBA**

# FINDING THE DEVICE IP ADDRESS

All current A4 and A3 Toshiba devices



## Purpose

This guide outlines the different methods to finding what the IP address of your Toshiba device is.

To keep this document uniform, it will focus on printing pages from your printer or MFD that will show all of your device's network information and configuration.

## Models Supported

<b>A4 Desktop Series I</b>
Colour e-STUDIO 305CS / 305CP  Monochrome e-STUDIO 385P / 385S / 525P
<b>A4 Desktop Series II</b>
Colour e-STUDIO 338CS / 388CS / 388CP / 389CS / 479CS  Monochrome e-STUDIO 408S / 408P / 409S / 409P / 478S / 528P
<b>e-BRIDGE Next Series III</b>
Colour e-Studio 2020AC / 2525AC / 3025AC / 3525AC / 4525AC / 5525AC / 6525AC  Mono e-Studio 2528A / 5525A / 6528A
<b>e-BRIDGE Next Series II</b>
Colour e-Studio 2010AC / 2515AC / 3015AC / 3515AC / 4515AC / 5015AC / 5516AC / 6516AC / 7516AC / 330AC / 400AC  Mono e-Studio 2518A / 5518A / 7518A / 8518A
<b>e-BRIDGE Next Series I</b>
Colour e-Studio 2000AC / 2505AC / 3005AC / 3505AC / 4505AC / 5005AC / 5506AC / 6506AC / 7506AC  Mono e-Studio 2508A / 3508A / 4508A / 3508LP / 4508LP / 5508A / 7508A / 8508A

## Finding your IP Address

### A4 Desktop Series II

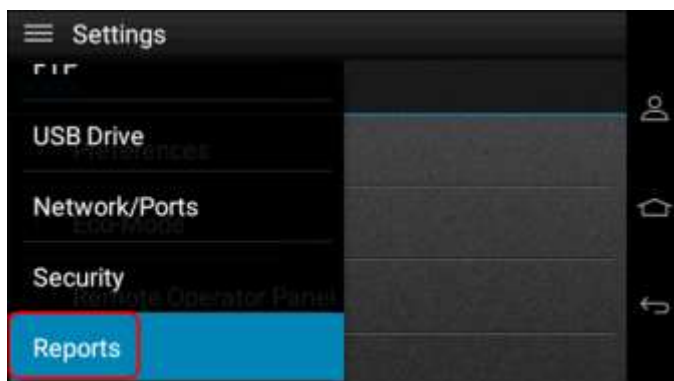
1. The device's IP Address will normally be set on Run up, and will appear at the top of the screen as shown below



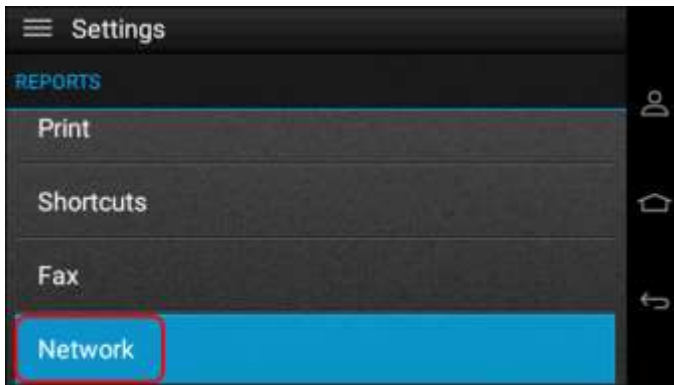
2. To print a Network report, press "Settings"



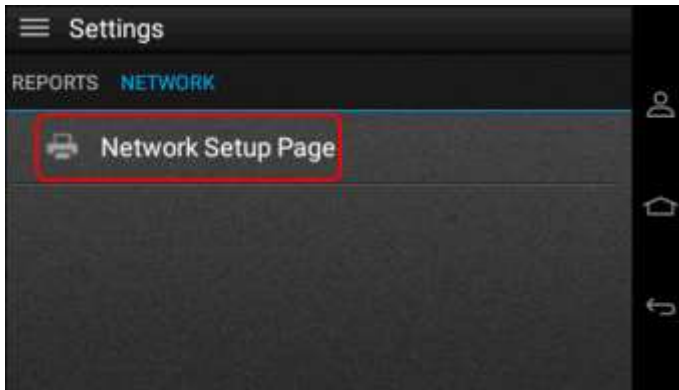
3. Scroll down until you see "Reports" and select



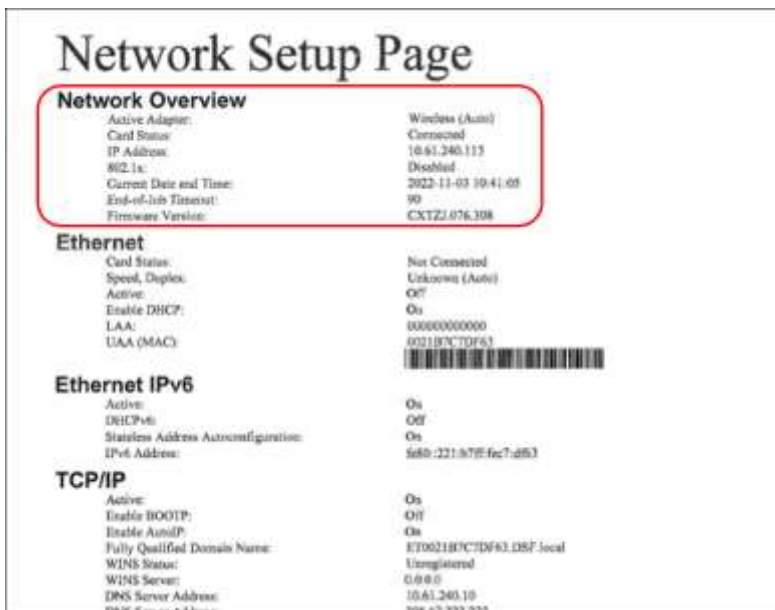
4. Then scroll down until you see “Network”, and select



5. Then print a “Network Setup Page”

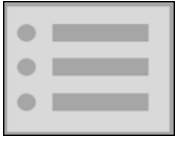


6. Network Setup Page sample below (If not connected to Network, this will not be shown)



## A4 Desktop Series I

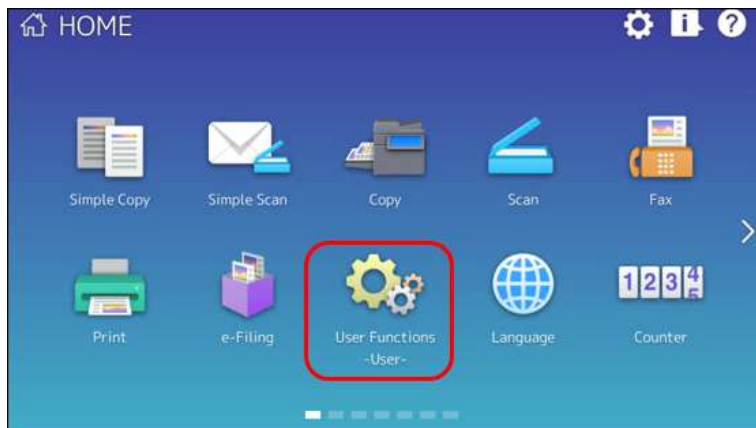
1. Like A4 Desktop Series II devices, the IP Address on A4 Desktop Series I models is displayed on the top of the screen
2. Press the “Menu” button on the bottom right-hand corner



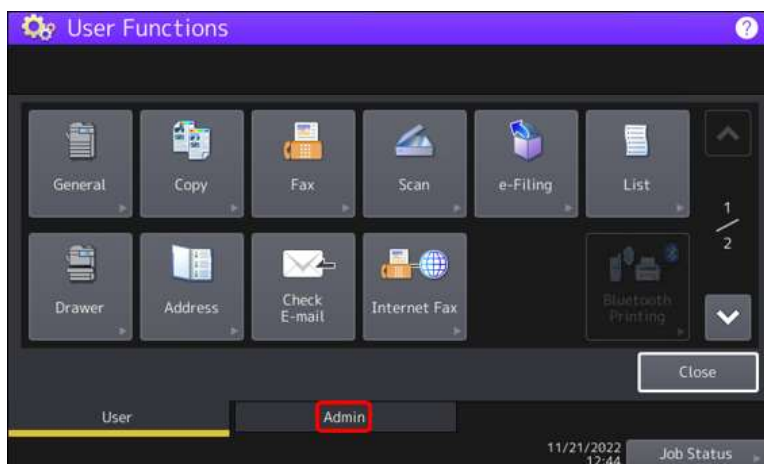
3. Scroll down to “Reports” and enter menu
4. Choose “Network Report” and then “Print Network Report”
5. These reports are identical between all A4 Desktop Series I and Series II models.

## e-BRIDGE Next Series I and II Models

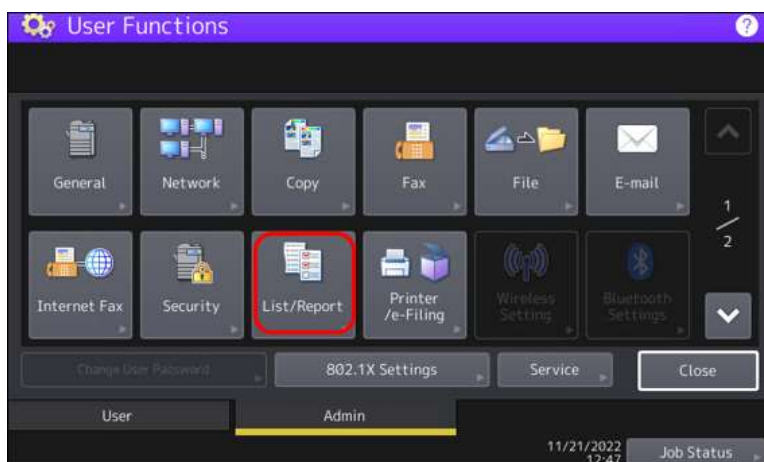
1. From the Control Panel, press "User Functions User"



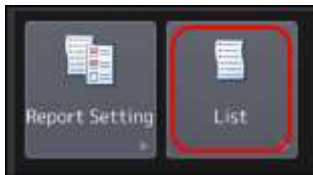
2. Press the "Admin" tab at the bottom. Login with the default password of "123456"



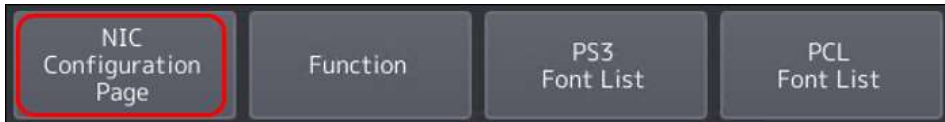
3. Choose "List/Report"



4. Under "List/Report" choose "List"



5. Choose "NIC Configuration Page"



6. This will give you the print-out below

```

=====
Interface          : Wired LAN                      Version      : TP01SY0W1800
Unit Serial No     : CRAL18397                                Connector   : RJ45
Network Address    : 00:80:91:d3:f6:bc
LAN Standard       : Ethernet
Network Mode       : Auto

Novell Network Information                                disable

TCP/IP Network Information for IPV4                      enabled
Address Mode       : Static IP
IP Address         : 192.168.0.70
Subnet Mask        : 255.255.255.0
Default Gateway    : 192.168.0.1
Primary DNS Server : 192.168.0.1
DNS Name           : modem
Host Name          : MFP13891260
Primary WINS Server : 0.0.0.0
NetBIOS Name       : MFP13891260

IPP Network Information                                  enabled
Internet Printing Protocol without SSL/TLS : http://MFP13891260.modem:631/Print
Internet Printing Protocol with SSL/TLS    : https://MFP13891260.modem:631/Print
=====

```

```

=====
TCP/IP Network Information for IPV6                      enabled
LLMNR              : enabled
Link local Address : fe80::280:91ff:fed3:f6bc
Address Mode       : Use Stateful Address
IP Address         :
Prefix Length      :
Default Gateway    :
DHCPv6 Server for IP Address : enabled
DHCPv6 Server for Option : enabled
Primary IPv6 DNS Server :
Secondary IPv6 DNS Server :
=====

```

## e-BRIDGE Next Series III Models

Follow the same steps as eBN I and II models, only the icons have been updated



If you have a Secondary NIC setup, this will be shown as in the print-out below. Example of eBN III NIC Configuration page

