



TOSHIBA

WINDOWS 10 DRIVER SETUP

Microsoft Windows 10



Microsoft Windows 10 Driver Installation

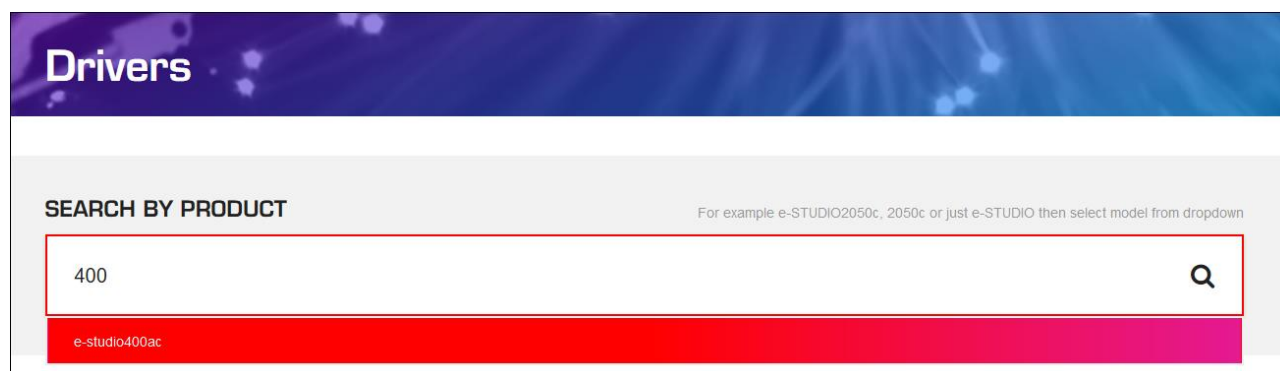
This guide was created to assist in the setup of your Printer or MFD. All guides were created using Windows 10

This document covers the following models

e-BRIDGE Next Series II
Colour e-STUDIO 2010AC / 2515AC / 3015AC / 3515AC / 4515AC / 5015AC / 5516AC / 6516AC / 7516AC / 330AC / 400AC Mono e-STUDIO 2518A / 5518A / 7518A / 8518A
e-BRIDGE Next Series I
Colour e-STUDIO 2000AC / 2505AC / 3005AC / 3505AC / 4505AC / 5005AC / 5506AC / 6506AC / 7506AC Mono e-STUDIO 2508A / 3508A / 4508A 3508LP / 4508LP / 5508A / 7508A / 8508A

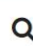
Downloading the Driver:

1. Find and download your driver at <https://www.toshiba-business.com.au/support/drivers>
search for your Toshiba MFD model in the Search bar. Putting in just the model number will show the full name of your MFD. Click on the red bar below at this point



Drivers

SEARCH BY PRODUCT For example e-STUDIO2050c, 2050c or just e-STUDIO then select model from dropdown


400 

e-studio400ac

- After searching, please select the driver of your choice and select “**Download**”

e-STUDIO400AC Download Details

Fast, compact A4 Colour printing with user-friendly set up and management and superior image quality.
Compatible with AquaAce Water-resistant paper. [Order now!](#)
[Read More >](#)



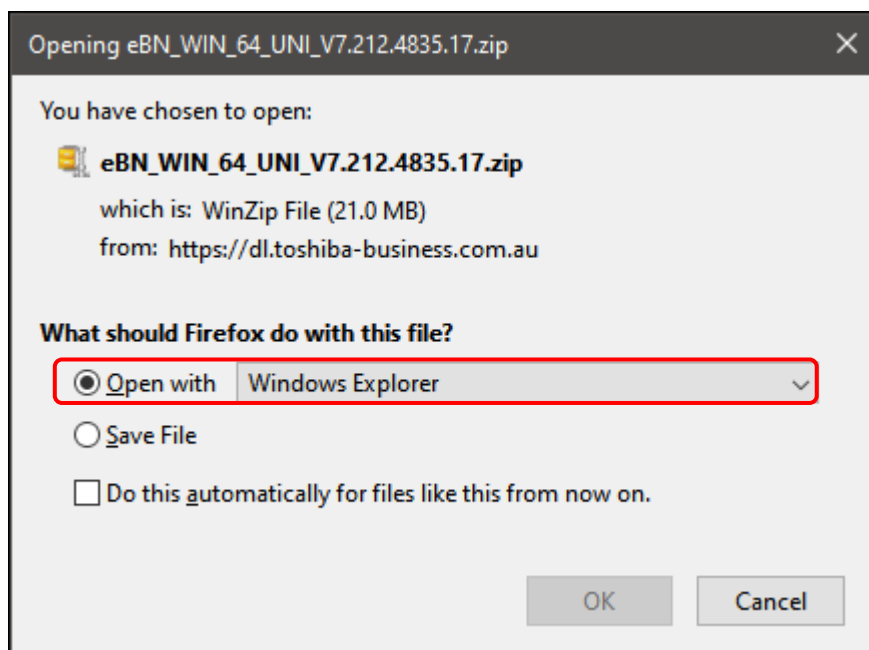
Find Another Product

DRIVERS

Operating System Windows 10

Driver	Version	Operating System	File Size	
Universal 2	7.212.4835.17	Windows 10 32 Bit	19.3 Mb	<input type="button" value="Download"/>
Universal PS3	7.212.4835.17	Windows 10 32 Bit	18.8 Mb	<input type="button" value="Download"/>
Universal XPS	7.212.4835.14	Windows 10 32 Bit	18.1 Mb	<input type="button" value="Download"/>
e-STUDIO Fax	4.1.18.0	Windows 10 32 Bit	4.7 Mb	<input type="button" value="Download"/>
Universal 2	7.212.4835.17	Windows 10 64 Bit	21 Mb	<input type="button" value="Download"/>

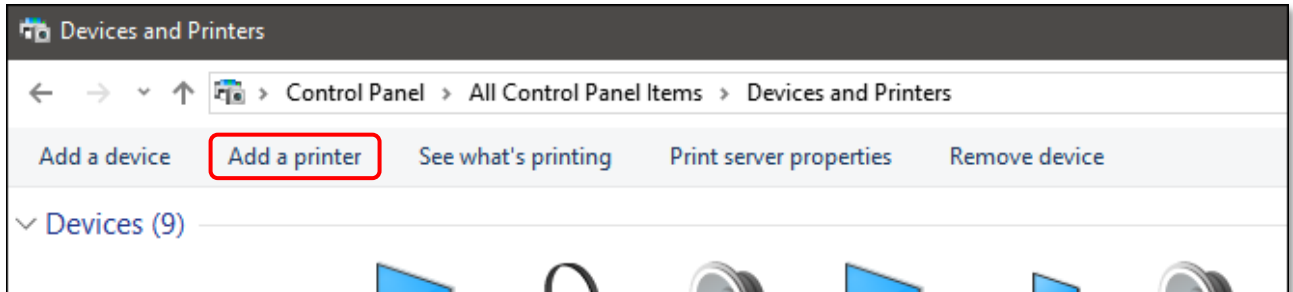
- Click “**Open**” once the file has downloaded.



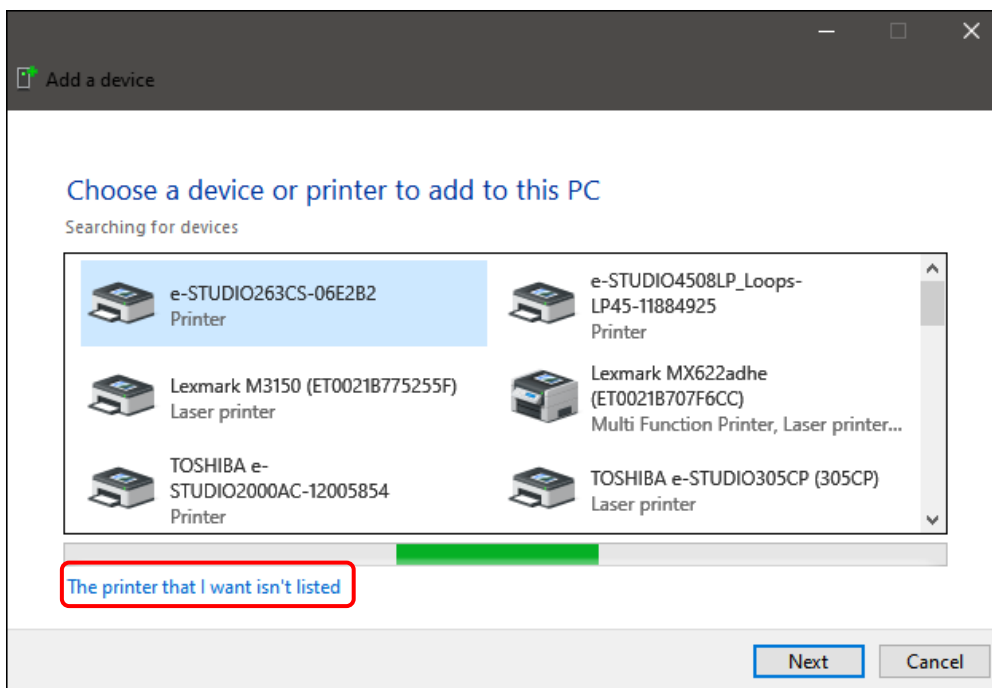
- Browse to the downloads folder, where you will see your zipped file. Unpack the zipped file, by double clicking on it. This will unzip it to your downloads folder

Installing the Printer Driver

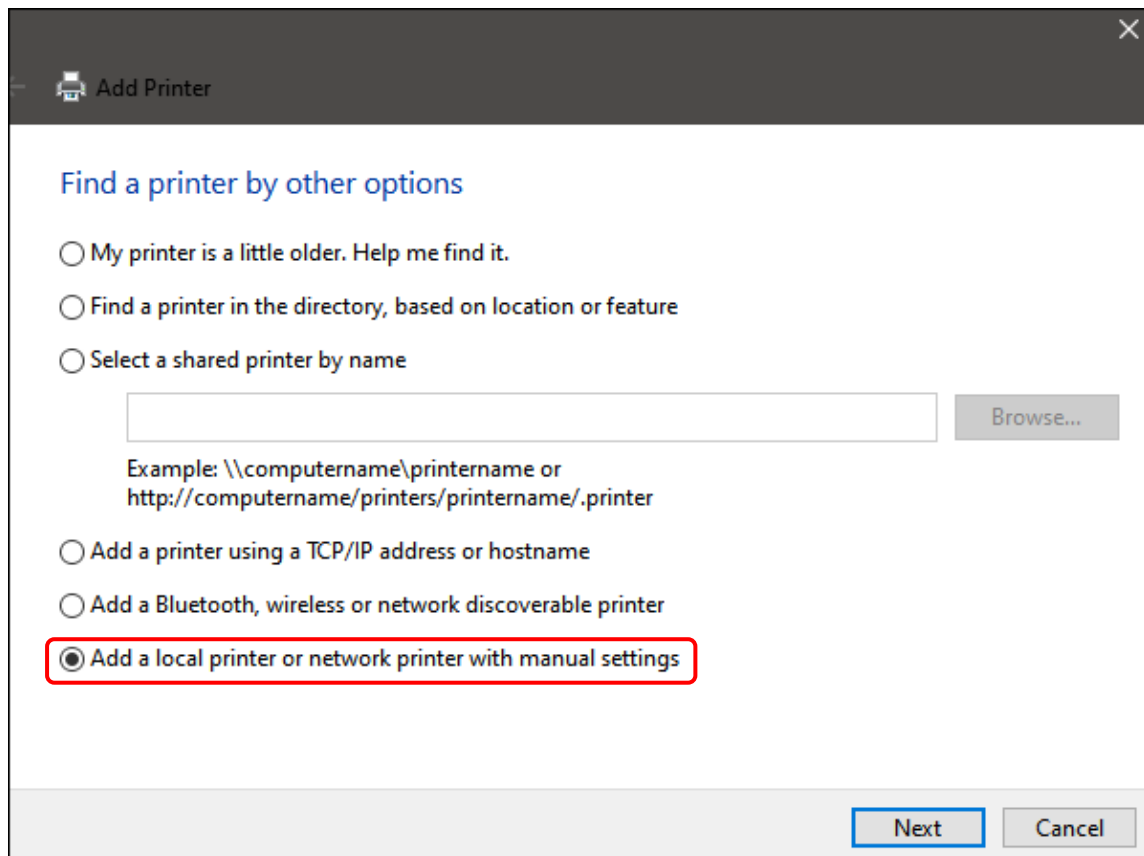
- 1 Then go to Control Panel, Devices and Printers. Here click **Add a Printer**



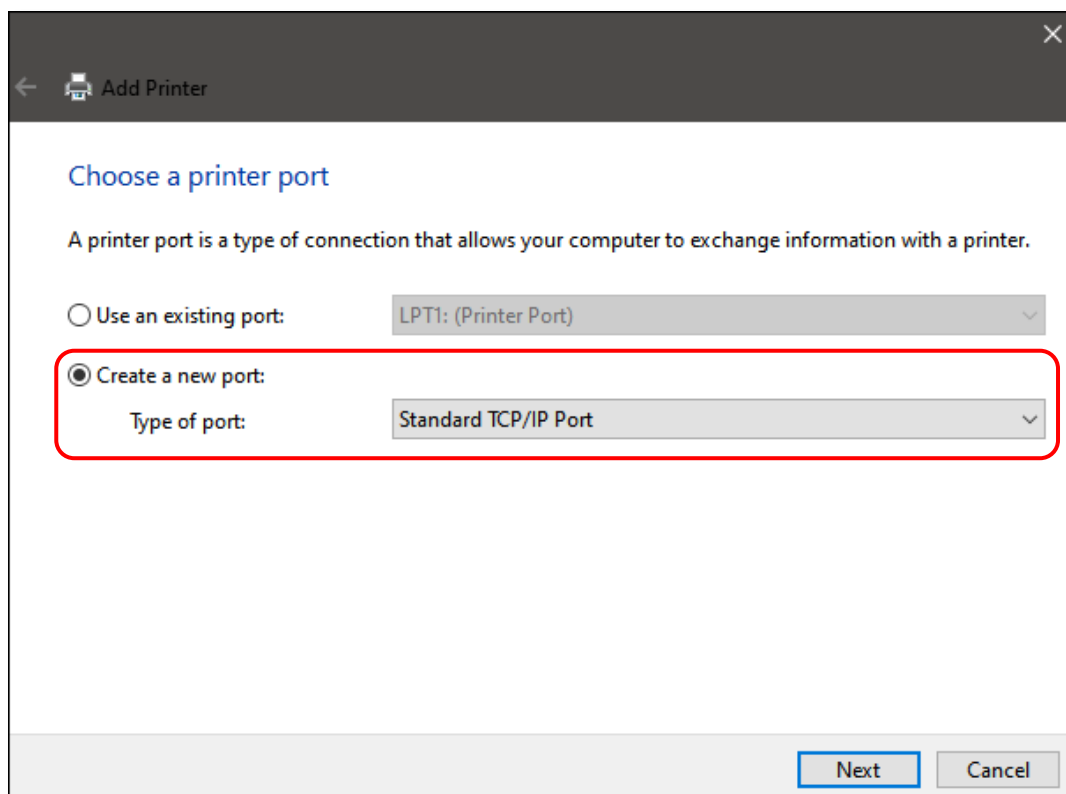
- 2 After you click on **Add Printer**, then choose **The printer I want isn't listed** then click "Next"



- 3 Choose **Add a local printer or network printer with manual settings** then click “Next”



- 4 Next chose **Create a new port**. Type of port, should be **Standard TCP/IP Port** and click “Next”



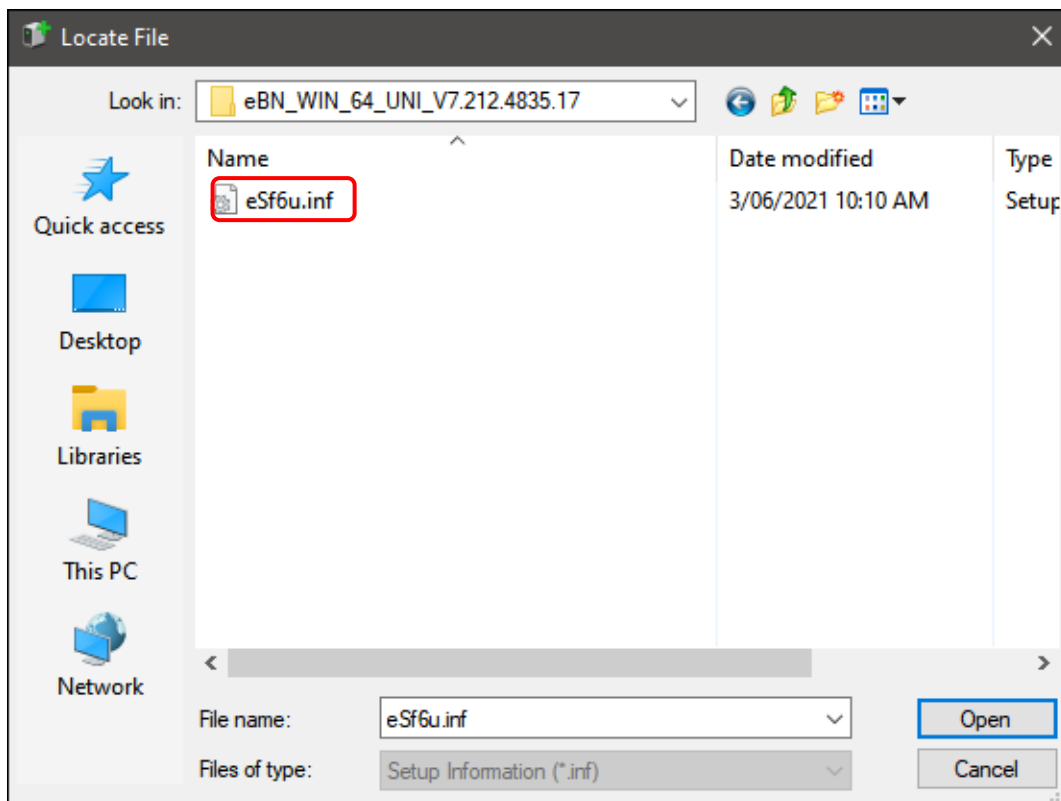
- 5 Next input your **Host Name** or **IP Address** then click “Next”

The screenshot shows the 'Add Printer' window with the title 'Add Printer'. Below the title bar, there is a back arrow and a printer icon. The main heading is 'Type a printer hostname or IP address'. Under this heading, there is a 'Device type:' dropdown menu set to 'TCP/IP Device'. Below that, there are two input fields: 'Hostname or IP address:' and 'Port name:'. Both fields contain the IP address '10.61.240.135'. A red rectangle highlights these two input fields. Below the input fields, there is a checkbox labeled 'Query the printer and automatically select the driver to use', which is currently unchecked. At the bottom right, there are two buttons: 'Next' and 'Cancel'.

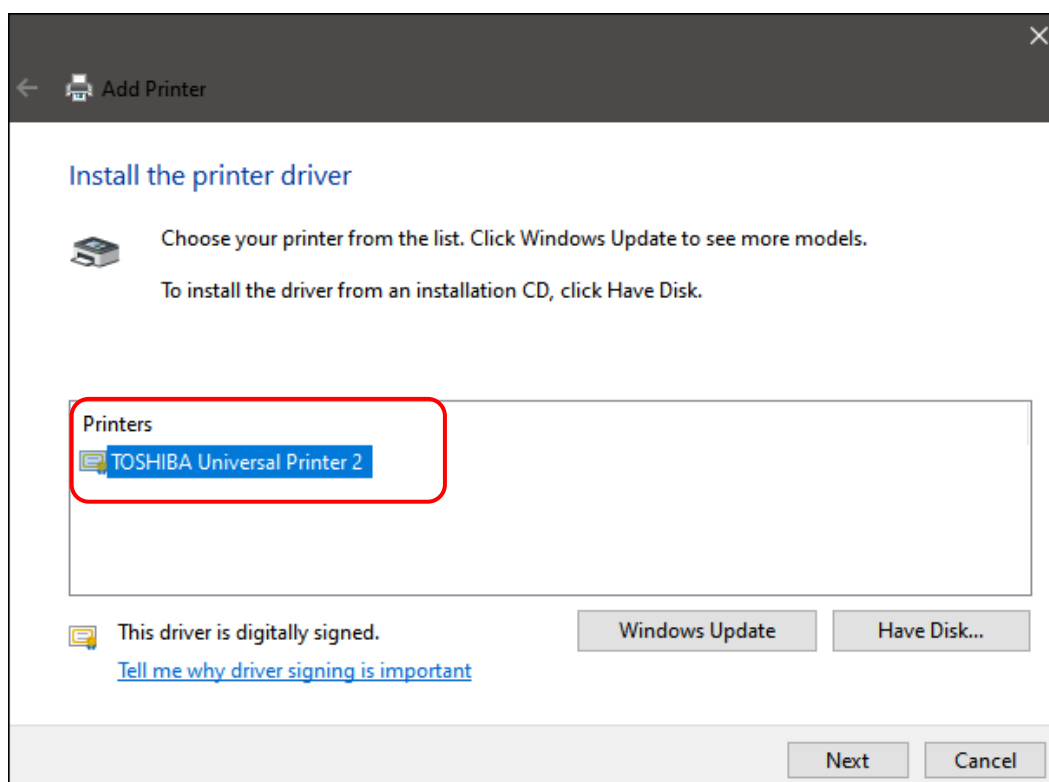
- 6 Here choose **Have Disk** then click “Next”

The screenshot shows the 'Add Printer' window with the title 'Add Printer'. Below the title bar, there is a back arrow and a printer icon. The main heading is 'Install the printer driver'. Below this heading, there is a printer icon and the text: 'Choose your printer from the list. Click Windows Update to see more models. To install the driver from an installation CD, click Have Disk.' Below this text, there are two list boxes. The left list box is labeled 'Manufacturer' and contains the following items: 'Google Inc.', 'Lexmark', 'Microsoft', and 'TOSHIBA'. The right list box is labeled 'Printers' and contains the following item: 'Google Cloud Printer'. Below the list boxes, there is a message: 'This driver has an Authenticode(tm) signature. Tell me why driver signing is important'. To the right of this message, there are two buttons: 'Windows Update' and 'Have Disk...'. The 'Have Disk...' button is highlighted with a red rectangle. At the bottom right, there are two buttons: 'Next' and 'Cancel'.

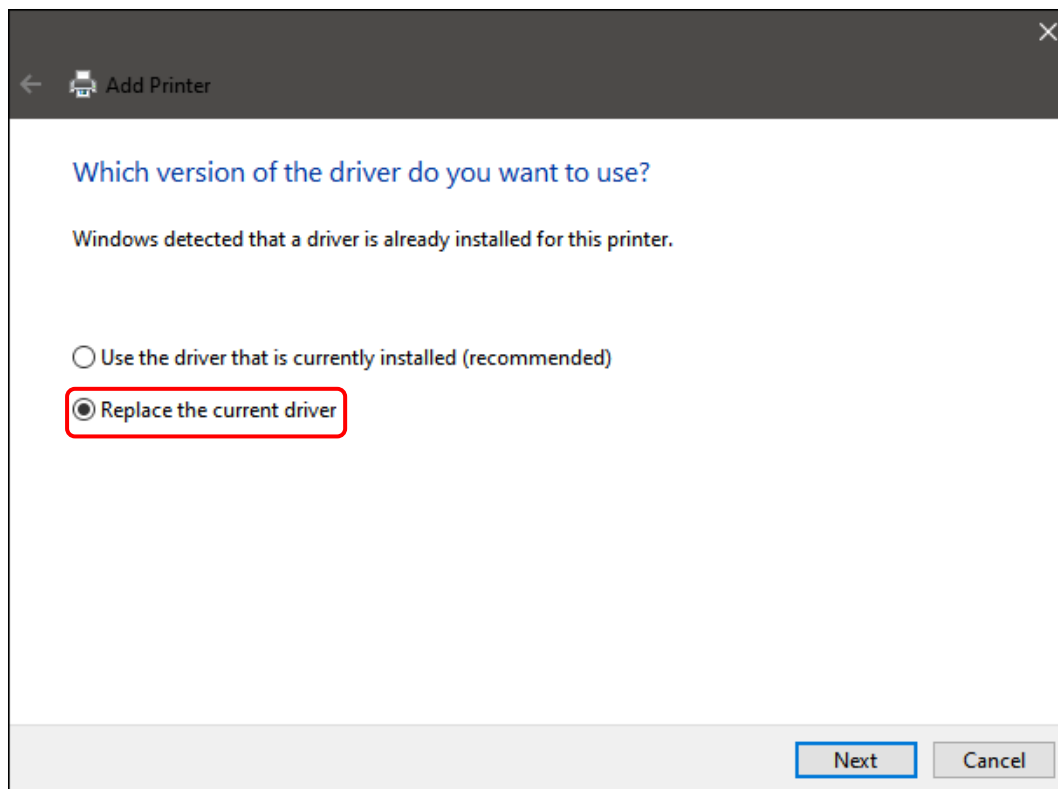
- 7 Now browse to your downloads folder where you dragged the driver to, select the Esf6h.inf file and click “Open”



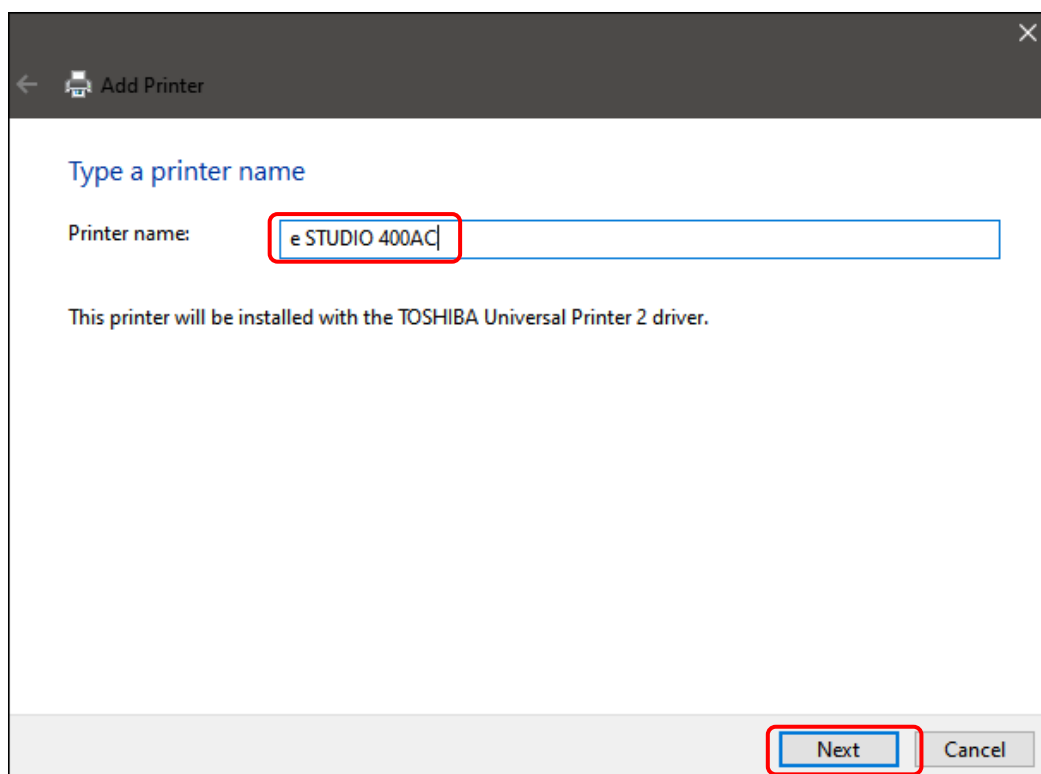
- 8 Here we chose to install the Universal 2 driver (recommended) then hit “Next”



- 9 You are either updating or installing a new driver. Here **Replace the current driver** and click “Next”



- 10 Next name your printer so it will be easy to find on your printer list.



- 11 Click on “Next” and this will install your printer driver

12 Here you can choose to Share your printer if on a server. Otherwise click "Next"

← Add Printer

Printer Sharing

If you want to share this printer, you must provide a share name. You can use the suggested name or type a new one. The share name will be visible to other network users.

☒ Do not share this printer

☐ Share this printer so that others on your network can find and use it

Share name:

Location:

Comment:

Next Cancel

13 The last step is to **set as the default** if required. Then hit **Finish**

← Add Printer

You've successfully added e STUDIO 400AC

☒ Set as the default printer

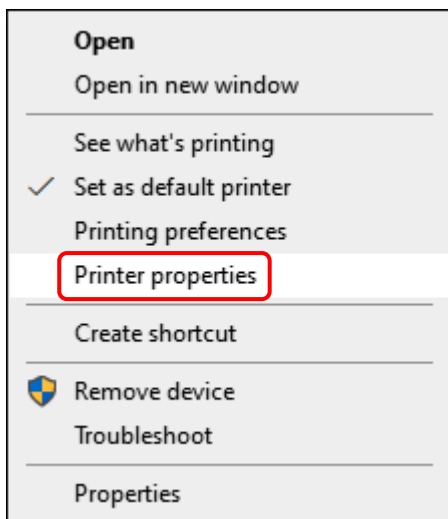
To check if your printer is working properly, or to see troubleshooting information for the printer, print a test page.

Print a test page

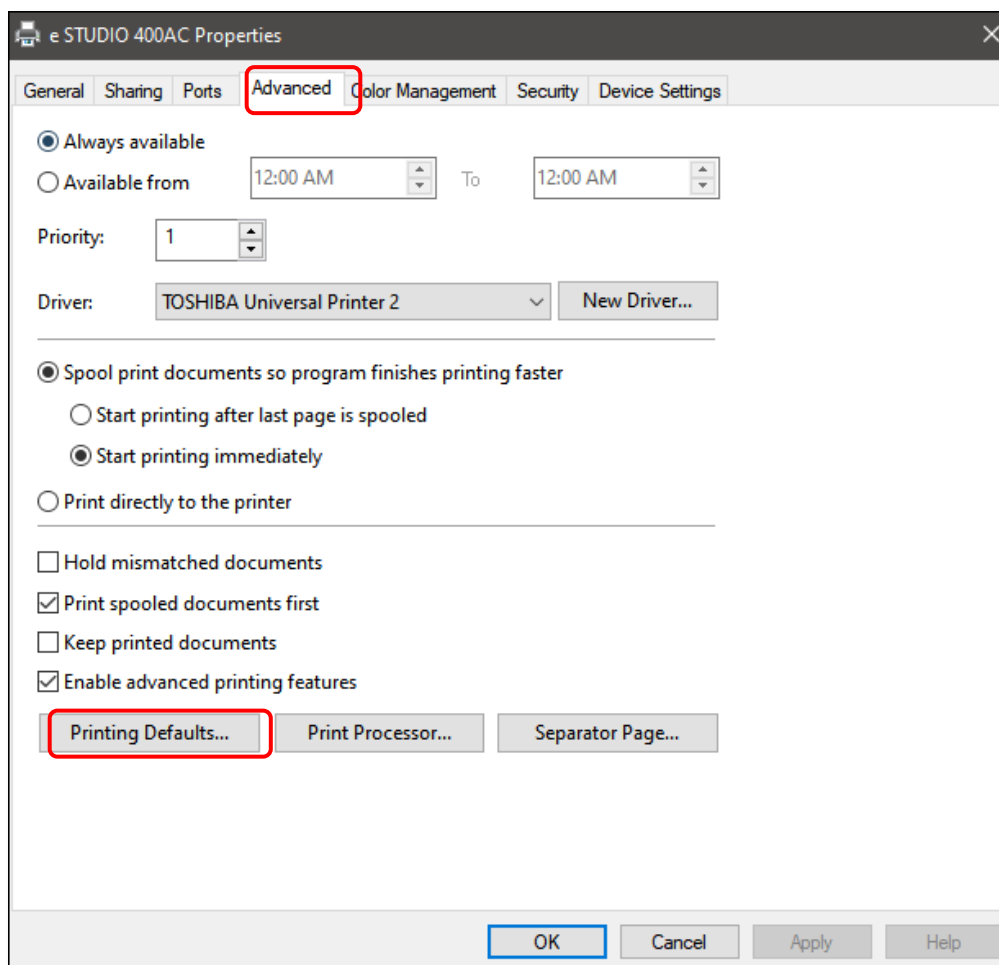
Finish Cancel

Printer Driver Configuration

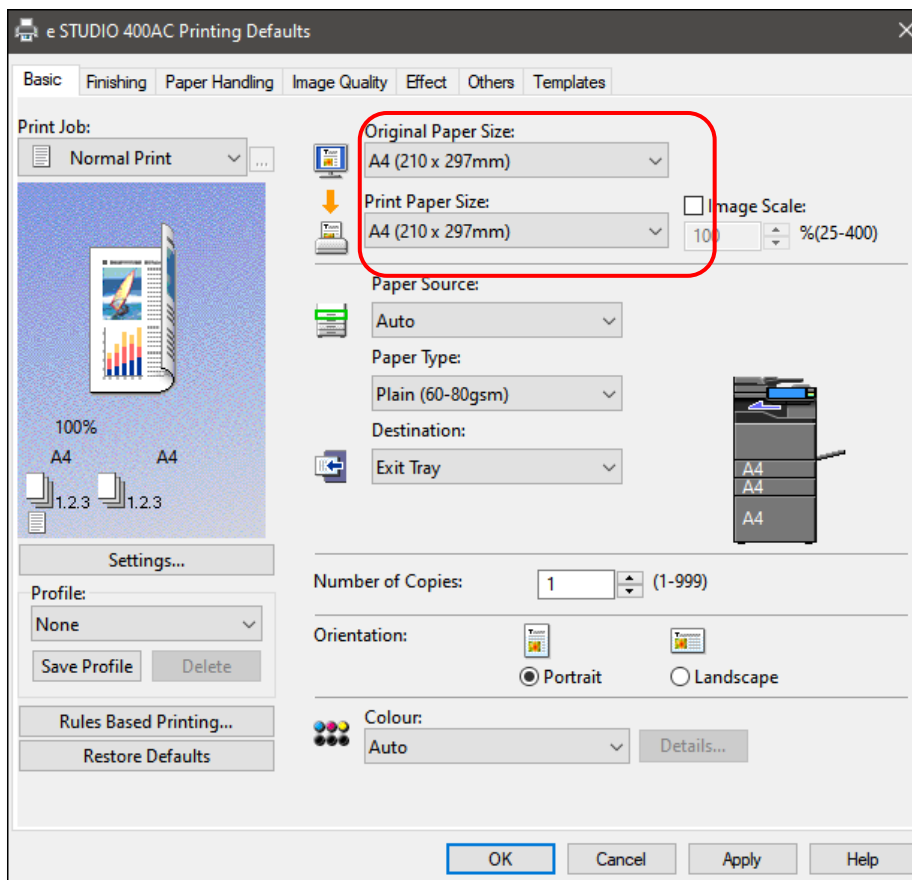
- 1 Next you need to **right click** on your printer driver and go to **Printer Properties**



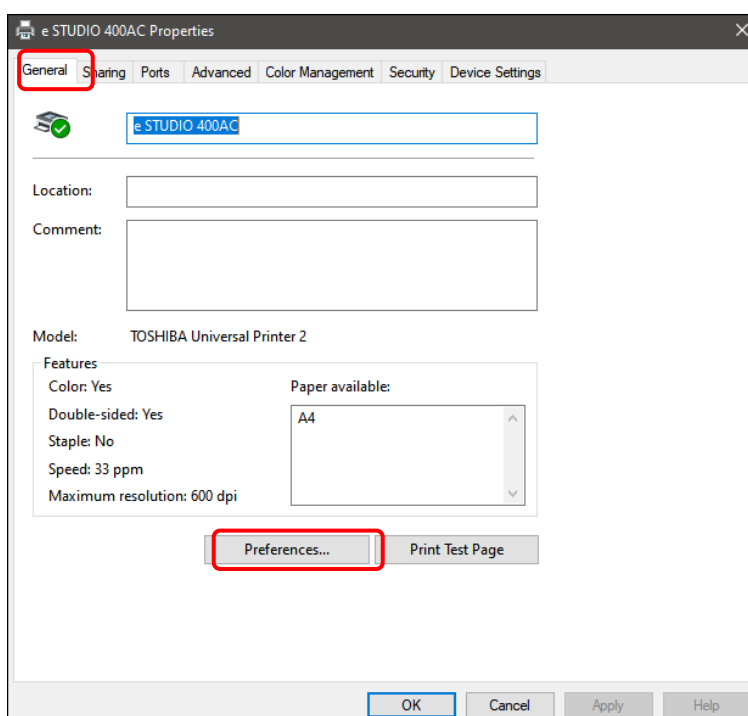
- 2 Then click on the **Advanced Tab** and go to **Printing Defaults**



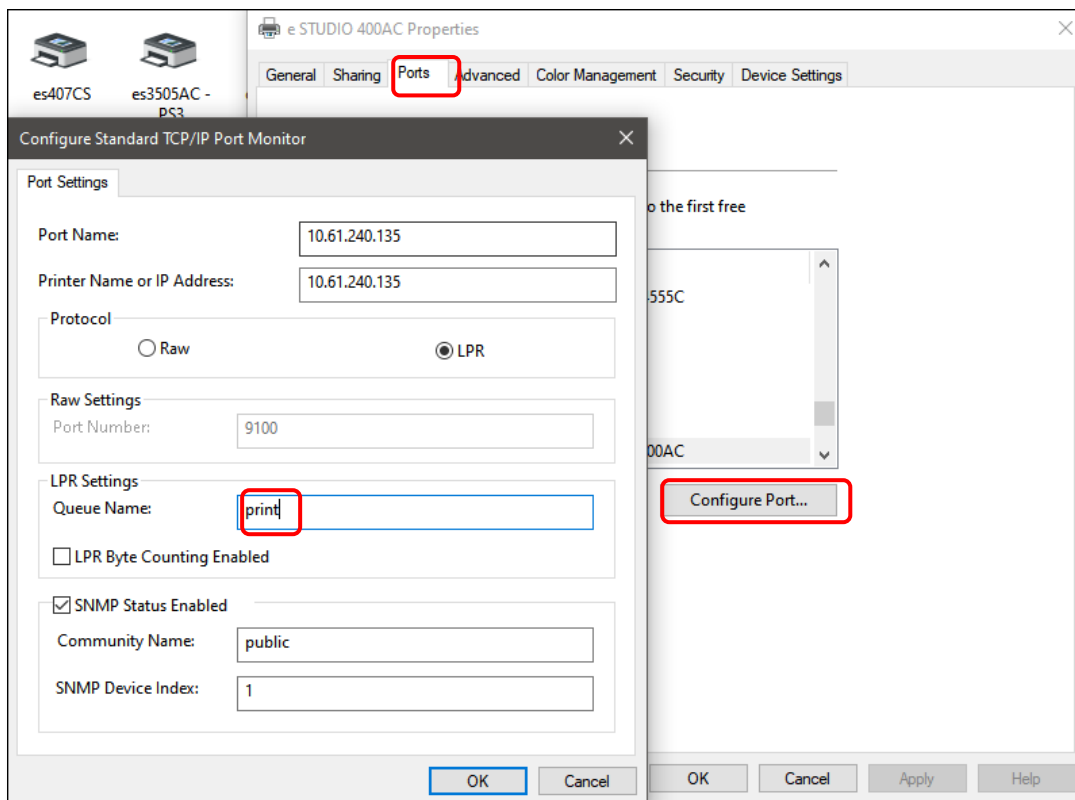
- Next ensure the MFD is setup for **A4**, as this will generally be set to US Letter



- Next from the **General** tab, click on **Preferences** ensure the A4 settings have been retained



5 Lastly set to print



6 Then click OK to complete the driver installation.