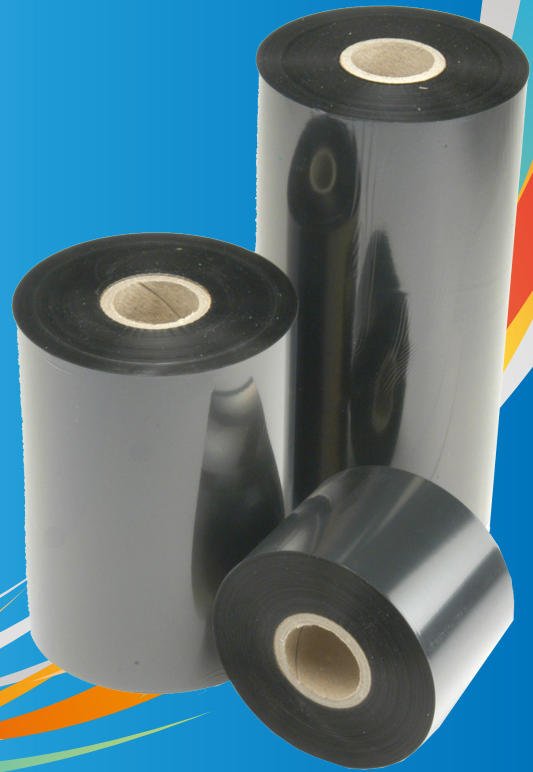


TOSHIBA

KANPEKI SERIES

P3



A CUT ABOVE THE REST

KEY CHARACTERISTICS

- High quality silicone backing protects your print head
- Superior performance on a wide range of labels
- Detailed fine printing
- Dark and dense barcodes



Medical



Inventory



Warehouse



Retail Tags

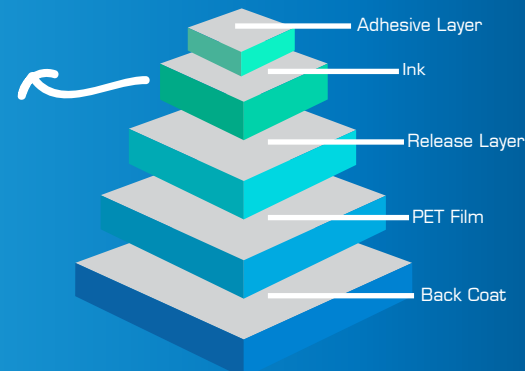


Pharmaceutical

Media	P3
Paper	
• Machine Coat	✓
• Semi Gloss	✓
• Gloss	✓
Synthetic	
• PE	✓
• PPE	✓
• PET	✓
Synthetic Tags	✓
Wash Care	✗
Flexible Film	✗

DID YOU KNOW?

P3 has a higher resin mix in the ink layer which enables aggressive keying.



CALL 1300 794 202
VISIT TOSHIBA-BUSINESS.COM.AU

TOGETHER
INFORMATION