

## PaperCut<sup>MF</sup>

### Product brochure

---

- Managing costs and reducing waste are two of the challenges businesses face today. One of the most effective ways to reduce costs and improve the productivity of network printing is with PaperCut MF.
- A scalable solution for all businesses from SME to enterprise which allows you to easily manage your print assets, collect usage data by location and device, identify inefficiency and implement cost recovery and allocation strategies to maximise your system productivity and return on investment.
- PaperCut MF also adapts to the size of your network. The modern design and architecture of the software provides full scalability. So it does not make a difference if your network consists of a single server and has only a few users or a multi-server network with a large number of users - PaperCut MF adapts to your needs.



# KEY FEATURES

- Print to a virtual queue and collect your print job from any networked Toshiba printer or MFP. Thanks to user authentication at the device, your sensitive data is protected from prying eyes.
- Control your device, paper and toner usage with intelligent printing policies to decide who prints what, where and how.
- Mobility Print allows you to print from any mobile or personal device for more flexibility. Multiple other mobile and BYOD solutions are also available.
- Installing and configuring PaperCut MF via the browser-based administrator interface is extremely easy. All Toshiba MFPs and printers on your existing print server will automatically be found and imported.
- You can also allocate print quotas to user groups. With the over 50 standard reports in PaperCut MF, you can track who, where and how much is being printed on all the printers on your network.
- Easy integration with popular payment gateways allow users to transfer funds from external accounts into their personal PaperCut MF account.
- Minimise waste with data visualisation and print controls. This not only helps you save money, it also saves resources.
- PaperCut MF Professional edition offers Law Firms, Accountancy Practices, Architecture Firms and some Higher Education the ability to bill their clients for Copy, Print, Fax and Scan via a simple popup for matter codes, client codes, job numbers, case numbers etc.
- To further streamline the experience an optional module is also available to exchange billing information automatically with popular practice management platforms such as Infinitylaw, Lexis Affinity, LEAP, MYOB Enterprise, Reckon, Xero and many others.

# REDUCE COSTS

## User Management

PaperCut MF automatically synchronises user accounts with leading directory services such as Active Directory, Open Directory, LDAP or eDirectory.

## One-click reporting

You can choose from more than 50 one-click reports in PDF, HTML or Excel format. Of course, you can also create your own reports by specifying date ranges or filtering and sorting the available data. Access these reports from any web browser or schedule them to be automatically generated and e-mailed.

## Page-level colour detection

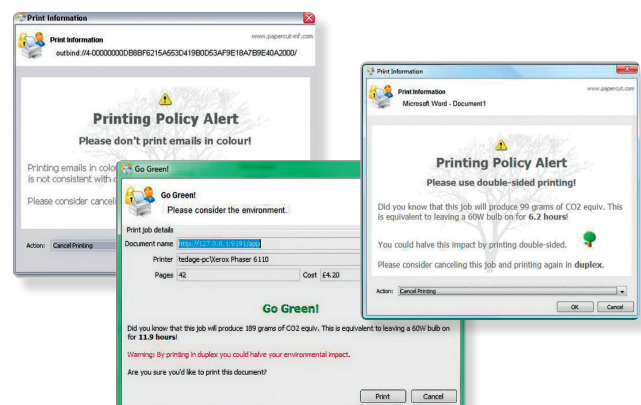
The page-level colour detection examines each page of a document and detects the use of colour. This allows a more precise analysis of the colour ratio per user, device or department.

## Advanced filtering and restriction

With PaperCut MF embedded filters, you can control and implement print policies to improve the device utilisation of your print fleet. Enforce duplex or greyscale printing, automatically detect and delete duplicate jobs, route large jobs to dedicated high-volume printers, ask users to confirm single-sided output or suggest alternative printers. Always print emails on your Toshiba Eco MFP and re-use paper, minimise the blocking of queues and avoid unnecessary print jobs.

With the advanced scripting interface you can create, fine tune and customise your own printing policies. While many settings are made via simple tick boxes, a little JavaScript will open up

a new world of opportunities to you. You can display pop-up messages to remind users to select the duplex option or prompt confirmation for large print jobs.



At a high level, advanced scripting provides the ability to:

- adapt logic based on print job attributes such as cost, pages, document name, time etc.
- modify job attributes and behaviour such as routing the job to another printer, influencing job cost and appending metadata such as comments.
- interact with the users via client messages and pop-ups or dialogue boxes.

# PRINT WHEREVER FROM WHATEVER YOU WANT

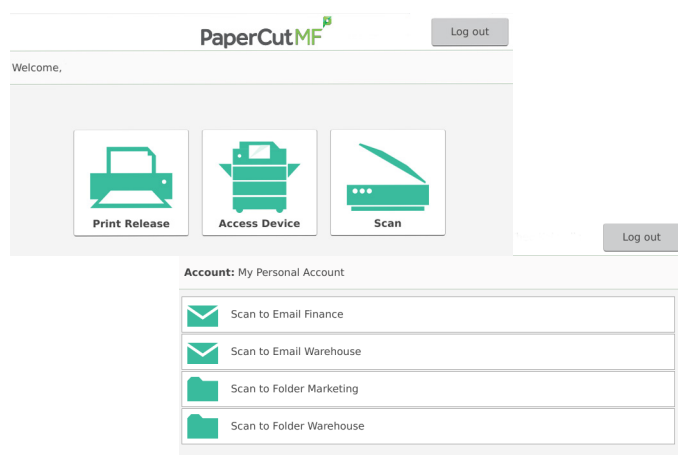
We know that in today's world you need to be flexible to be successful. PaperCut's "Mobility Print" feature provides the choice and freedom to print from whatever device you want. Setup is quick and easy with a few simple steps to get up and running and new printers are automatically published, so there's no need to know printer IP addresses or download print drivers or brand specific apps. Simply use the Mobility Print app on your device, print to Find-Me Printing or a local printer and print.

PaperCut's "Find-Me Printing" gives the modern, creative office worker the mobility and freedom they need. PaperCut MF deploys a Virtual Print Queue, so regardless of location, users can retrieve their print jobs from any device in the network, when and where they choose.

Many companies facilitate "Bring Your Own Device (BYOD)" policies and PaperCut caters to these needs with multiple mobile and BYOD solutions available. Devices not connected exclusively to existing print networks can still be used thanks to Web Print, e-mail-to-print, Google Cloud Print and iOS printing features.

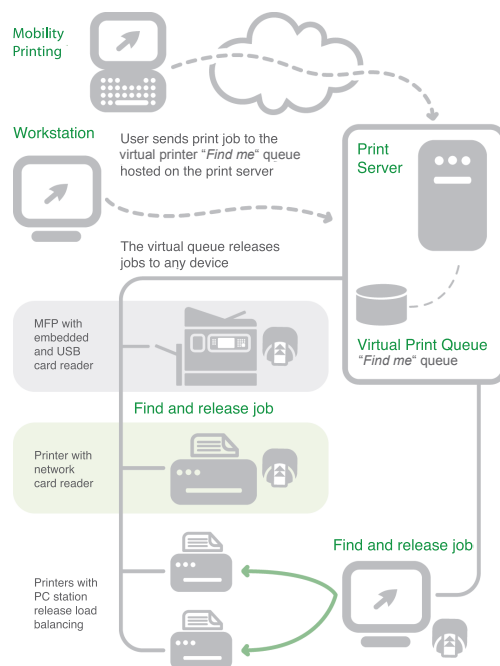
## INTEGRATED SCANNING

PaperCut MF's Integrated Scanning provides users seamless control of where and how their documents will be scanned, all within the one display. With user and group scanning permissions pre-configurable through the PaperCut MF web admin interface, users can quickly and easily scan to authorised email and folder destinations.



## RESILIENCY

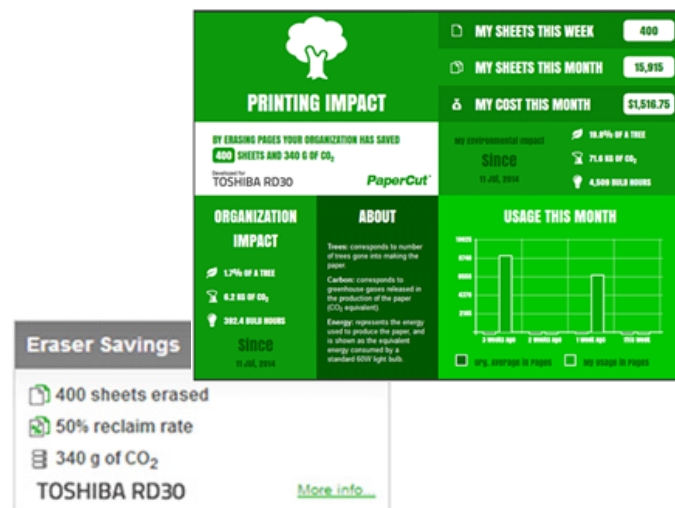
PaperCut MF provides uninterrupted printing with distributed deployments, considerations such as redundancy and resilience to network outages ensures total peace of mind for your organisation.



## A GREEN SOLUTION

Implementing printing policies and monitoring the usage of your print fleet offers you more than just the possibility to reduce costs. Today's environmentally conscious world demands ethical solutions. PaperCut MF has an in-built environmental impact reporting tool which delivers real, quantifiable data. It even records the number of pages erased on the e-STUDIO RD30, thus showing the benefits of Toshiba's Eco-MFP.

With this data you can draw the users' attention to their habits. Highlight the environmental impact of their activities to change their behaviour. The resulting reduction will not only help your company save money, it will also make you and your employees better corporate citizens.





## System Requirements

<b>Supported Operating Systems</b>	Windows 10/8/7/Vista/Server 2008 (32/64 bit), Windows Server 2012 R2/Server 2008 R2 (64 bit), Mac OS X 10.4 - El Capitan, Linux, Novell
<b>Memory</b>	Required: 768 MB Recommended: 1 GB or more
<b>Free Disk Space</b>	Required: 300 MB When using Print Archiving then a minimum of 100 GB of free disk space is recommended.

For detailed system requirements and a complete list of compatible MFP, printers and barcode printers, please contact your local Toshiba partner.

For more information go to [www.papercut.com/toshiba](http://www.papercut.com/toshiba)



## About Toshiba

Toshiba (Australia) Pty Limited is part of the globally operating Toshiba Tec Corporation, active in various high-tech industrial sectors.

Toshiba is a leading provider of information technology, operating across multiple industries - ranging from retail, education and business services to hospitality and manufacturing. With headquarters in Japan and over 80 subsidiaries worldwide, Toshiba Tec Corporation helps organisations transform the way they create, record, share, manage and display information. For more information please contact us:

### **TOSHIBA (Australia) Pty Limited**

Building C, 12-24 Talavera Road,  
North Ryde. 2113. Australia  
**Tel:** 1300 794 202

### **New Zealand**

58 Lunn Avenue, Mt Wellington  
**Tel:** 09 570 8530

[www.toshiba-business.com.au](http://www.toshiba-business.com.au)  
[www.toshiba-business.co.nz](http://www.toshiba-business.co.nz)

**Together Information is Toshiba's vision for how people and organisations create, record, share, manage and display ideas and data.**

**It is based on our belief that the most successful organisations are those that communicate information in the most efficient way .**

**We make that possible through an integrated portfolio of industry-specific solutions, all of which reflect Toshiba's commitment to the future of the planet.**

**For more information please visit [www.toshiba-business.com.au](http://www.toshiba-business.com.au)**