

TOSHIBA

NEW ZEALAND

TOGETHER INFORMATION



MARCH 2023

CONTENTS

About Toshiba

Welcome to Toshiba	3
Local Service and Maintenance	5
Kōdo Raven	5
Industry Solutions	6

Digital transformation

Kōdo Business Suite	7
Solutions and Apps	7
Print Management	8

Security

Toshiba's Secure MFP	8
----------------------------	---

Products

Printers & MFDs: Colour	9
Printers & MFDs: Monochrome	10
Label Printers: Portable and Desktop	11
Label Printers: Mid range and Industrial	12
Refurbished Devices	13

Services

Managed Print Services	14
Managed IT Services	16
Myfleet Web Portal	17

Support

Support Tools	18
Our Branches	19



TOSHIBA

A4

A3

A4-R

B4

WELCOME TO TOSHIBA

We are Toshiba. We commit to raising the quality of life for people around the world, ensuring progress that is in harmony with our planet. We have an unwavering drive to make and do things that lead to a better world.

Committed to People, Committed to the Future.



Toshiba's commitment, purposes and values are all embraced throughout these 5 pillars. These messages are acted upon throughout Toshiba worldwide:

The Basic Commitment of the Toshiba Group

Committed to People,
Committed to the Future.

Our Purpose

We turn on the promise of a new day

Our Values

Do the right thing
Look for a better way
Always consider the impact
Create together

Find out more about Toshiba Australia's commitment to **sustainability**.





Our people. At Toshiba, we view people as one of our most valuable assets. Ensuring a safe and comfortable working environment for employees is paramount at Toshiba. To demonstrate our organisation's commitment to a diverse and inclusive workplace, Toshiba Australia is thrilled to announce membership of the Diversity Council Australia.



Our customers. To us, our customers are our partners. Therefore, we always endeavour to understand the needs from their perspective with the objective of delivering optimal products and services.



Our environment. Sustainability is embedded in our corporate philosophy as we strive to support a sustainable environment in all our business activities. Toshiba has a clear goal for the future of the planet; we plan to leave the earth in a better state than today. We are committed to work with 17 United Nations Global Compact Goals to improve the earth and the future of life.



Our community. With so many worthy causes to support, it is often difficult to select just a few. We chose to donate to a range of local charities, relating specifically to children's health, medical research and programs for disadvantaged people, as well as mental health and well-being.



Our supply chain. Thinking global, acting local. As a manufacturing company, Toshiba is in a strong position to enhance overall sustainability by reducing environmental impacts throughout its product life-cycles. With green procurement of environmentally compatible materials and parts, energy conservation and abolition of certain chemical substances, we systematically improve the ecological balance of our products.

LOCAL SERVICE AND MAINTENANCE

Big enough to deliver, small enough to care. We offer quality service and support whenever you need it. With service centres covering much of the Oceania region, a local R&D and call centre, as well as various support options online. Support for our customers is of utmost priority to ensure you have an excellent experience with our team from day one.



30+ years in
New Zealand,
40+ years in
Australia



Sydney Global
R&D Hub
since 1988



Local Call
Centre in
Melbourne



Strong
Geographical
Service Presence

TOSHIBA SERVICE REACH

OCEAN TO OUTBACK

Toshiba have got you covered with over 90 service centres covering the Oceania region.



Kōdo Raven

Where device maintenance meets the cloud.



Another support feature available is Toshiba's **Kōdo Raven**. This technology helps to prevent issues before they occur, allowing you to work stress-free, without the need to spend time taking care of your devices. Working autonomously via the cloud, health checks on the device enable all necessary updates to be completed and data backed up. If consumables are running low or parts need replacing—Toshiba automatically dispatches to your premises. Kōdo Raven is pre-emptive, allowing you to be contacted before any of your work day has been disrupted.

INDUSTRY SOLUTIONS

Digital transformation offers benefits to businesses across all industries and sectors.

At Toshiba, we understand that every industry has its own specific requirements and will benefit differently from digital transformation.

That's why our technology solutions - offering document digitisation, process automation, print management, asset tracking, waste reduction and communication - are tailored sector by sector.



Reduced Costs

Streamlined processes reduce the volume of paper required and time to handle and manage it.



Clear Communication

Rapidly get messages to every part of your organisation from one central management point.



Enhanced Print Service

Offer printing from anywhere, any device, with full print rules and chargeback.

Efficiency

Automated workflows help to streamline processes and enable staff to be more productive.



Environmental Responsibility

By placing traditional paper formats with digital documents, you save resources, for a positive environmental impact.



Compliance

Ensure all documents are managed to regulatory standards for security and retention.



Digitally transform your business. Toshiba's Kōdo Business Suite drives digital transformation. It is built using Toshiba's unrivalled expertise in OCR and workflow management, and world-beating Digital Office content management platform. The Kōdo Business Suite takes its name from the Japanese word for 'Altitude'. With Toshiba's Kōdo, your business can reach new heights—and win the digital transformation race.



Kōdo® Business Suite

Transform your invoice processing,
document management, information
security & business workflows.

See what **Kōdo Business Suite**
has to offer.



Capture - Extract - Process - Deliver with Toshiba's e-BRIDGE Capture & Store

e-BRIDGE Capture & Store is a powerful yet easy-to-use solution to take you on a digital transformation journey. Integrate your paper-based workflows, inbound emails and faxes to your document management systems, databases, corporate file servers and content management applications.

Kōdo® / e-BRIDGE+

Maximise your digital investment with Toshiba Kōdo and e-BRIDGE Plus Apps. Connect directly to business applications to simplify your everyday work tasks with one-touch process automation. Multiply your productivity, save time, reduce resources and create business transformation today.

Connect directly to Google Drive, Microsoft 365, Dropbox, OneDrive and more!
Check out the full range of Apps at **Toshiba-business.co.nz/apps**.





PaperCut^{MF}

PaperCutTM Hive

Print Management. Print Management puts you in the driver's seat to better manage your printing needs.

Implementing this solution into your work environment allows you to have visibility and effectively manage your print environment to save on costs, minimise waste and your impact on the environment, keep your documents safe & secure, integrate with 3rd party systems, manage print rooms, empower your staff and digitise your documents.

SECURITY



Device

Install to End-of-Life
Product Defence



Access

Physical & Digital
Access Protection



Document

Document
Lifecycle Defence



Fleet

Fleet-wide Security
Administration

Security is a growing concern for businesses of all sizes. Toshiba's innovative yet tried and tested methods work to protect valuable data for all businesses. Battle your ever increasing security challenges head on.

Toshiba is here to help you reduce your business risk from unsecured MFP and printer devices, weak access controls, unsecured documents and limited employment of secure asset disposition policies. Here to protect you and your information, **Toshiba's SecureMFP** puts countermeasures in place for device security, access security, document security and end-of-life security, to ensure you are protected during the whole duration of your device's life.

e-STUDIO338cs

- Print speed up to 33 ppm A4
- Up to 1451 sheet paper capacity
- 4.3" (10.9 cm) touchscreen TFT colour LCD panel
- Std 2GB, 6GB max memory
- Solution-enabled device



e-STUDIO388cp

- Print speed up to 38 ppm A4
- Up to 1451 sheet paper capacity
- 4.3" (10.9 cm) colour touch screen
- Standard 1GB memory
- Solution-enabled device
- Automatic duplex



e-STUDIO330Ac/400Ac

- Compact scalable and secure
- 33/40 ppm A4 full colour
- Large 10.1" tilting colour touch panel
- Dual scan document feeder
- 3200 sheet input capacity
- Print, scan, copy, fax
- Memory std 4GB RAM + 320GB self encrypting HDD
- Wireless printing (opt)



e-STUDIO2020Ac

- 20 ppm full colour/mono
- A4/A3 MFD
- Standard embedded OCR
- 2900 sheet (max opt) paper supply
- 1200 x 1200 dpi print resolution
- Large 10.1" tilting colour touch panel
- 128GB Secure SSD with TPM 2.0
- Thick paper support up to 209gsm
- Dual Network Support
- Idle Screen Messaging



e-STUDIO2525Ac/3025Ac/3525Ac/4525Ac/5525Ac/6525Ac

- 25/30/35/45/55/65 ppm full colour/mono
- A4/A3 MFD
- Dual scan document feeder with double feed detection (opt)
- 5200 sheet (max opt) paper supply
- 128GB Secure SSD with TPM 2.0
- Large 10.1" tilting colour touch panel
- Standard Embedded OCR
- Colour scan up to 240 ipm @ 300dpi, File/USB/email (TIFF, PDF PDF/A, Searchable PDF, JPEG, XPS, DOCX, XLSX, PPTX)
- Thick paper support up to 300gsm
- Dual Network Support
- Idle Screen Messaging
- High compression PDF, secure PDF
- Flexible media handling
- Optional finishing, saddle-stitch booklets, hole punching



e-STUDIO6526Ac/6527Ac/7527Ac

- 65/65/75 ppm full colour, 65/75/85 ppm mono
- A4/A3 MFD
- True 1200x1200dpi
- 8020 sheet (max optional) paper supply
- Large 10.1" tilting colour touch panel
- Dual scan document feeder with double feed detection
- Twin IH fusing technology
- PCL6e/c, PS3, XPS plus Universal Print
- Scan to File/USB/email
- High compression PDF, secure PDF, PDF/A, Searchable PDF, Office Docs (DOCX, XLSX, PPTX)
- Stackless duplexing (60-300 gsm)
- Optional finishing, saddle-stitch booklets, hole punching
- 128GB Secure SSD with TPM 2.0
- Motion Sensors
- Thick paper support 300 gsm
- Toner and paper change on the fly



All models shown with options ** Design and specification subject to change without notice.
Features and options may vary by region. AirPrint and AirPrint logo is a registered trademark of Apple Systems, Inc.

e-STUDIO2822AF

- 28 ppm copy/print/fax/scan
- A4/A3 Mono MFP
- Colour scanning
- Environmental toner recycling



e-STUDIO409P

- Compact A4 Mono printer
- Print speed up to 40 ppm
- Compact design for small offices
- In-built high-level security features
- 256MB memory



e-STUDIO409s

- A4 Print speed up to 40 ppm
- Delivers first page in up to 5.9 seconds
- 2.8" (7.2cm) LCD touch panel
- Eco and energy saving features
- 512MB memory



e-STUDIO528P

- Print speed up to 52 ppm A4
- Flexible design, rugged construction
- Touchscreen TFT colour LCD panel
- Solution-enabled device
- Standard 1GB memory, 5GB Max



e-STUDIO478s

- All in one print, scan, copy & fax
- 47 ppm A4 Mono
- Large touch screen
- Paper capacity up to 2300 sheets
- 1200 x 1200 dpi resolution
- Eco and energy saving features
- Standard 2GB memory, 500GB HDD



e-STUDIO3508LP/4508LP

- The world's only MFP with erasable toner
- 35/45 PPM
- Monochrome & erasable blue
- Copy, print, colour scan, fax (opt)
- Standard network printing
- Secure MFP
- Energy Star compatible
- Up to 3200 sheet paper capacity
- Save up to 80% paper usage
- Significantly reduce CO₂ by 47.8% emissions



e-STUDIO7529A/9029A

- Unleash the power of Toshiba quality
- 75/90 ppm/cpm
- A4/A3 Mono MFD
- Environmental toner recycling and IH fuser
- Dual scan document feeder with double feed detection
- High compression PDF, secure PDF, PDF/A, Searchable PDF, Office Docs (DOCX, XLSX, PPTX)
- Optional fax
- Up to 8020 paper capacity
- Versatile finishing options
- User codes with reporting
- 128GB Secure SSD with TPM 2.0
- Thick paper support up to 300 gsm
- Standard OCR
- Toner and paper change on the fly



e-STUDIO2528A/5528A/6528A

- Your central information hub
- 25/55/65 ppm A4/A3 Mono MFD
- 5200 sheet (max opt) paper supply
- Standard Embedded OCR
- Dual scan document feeder with double feed detection (opt)
- 128GB Secure SSD with Trusted Platform Module (TPM) 2.0
- Thick paper support up to 256/300/300gsm
- Colour scan up to 240 ipm @ 300dpi, File/USB/email (TIFF, PDF, PDF/A, Searchable PDF, JPEG, XPS, DOCX, XLSX, PPTX)
- Large 10.1" tilting touch panel
- Dual Network Support
- Idle Screen Messaging
- All-in-one network ready
- Optional finishing



All models shown with options ** Design and specification subject to change without notice.
Features and options may vary by region. AirPrint and AirPrint logo is a registered trademark of Apple Systems, Inc.

LABEL PRINTERS

PORTABLE RANGE

Ideal for most portable applications, Toshiba's mobile label printers are compact and light yet rugged enough to meet the needs of today's demanding applications.

MOBILE PRINTERS

B-FP2D

- 2-inch flat head
- Direct thermal
- Compact, drop resistant, flexible connectivity
- 203Dpi
- 6ips

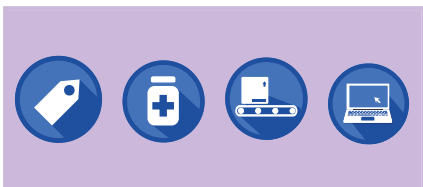
B-EP4D

- 4-inch flat head
- Direct thermal
- Compact, rugged, fast print speeds
- 203Dpi
- 4.13ips



DESKTOP RANGE

Toshiba's desktop label printer series can seamlessly integrate into existing systems, whatever the specification or printing requirement. Designed to be compact, stylish and unobtrusive, yet powerful and flexible for any environment and application.



DESKTOP PRINTERS

B-FV4T

Cerner certified

- 4-inch flat head
- Thermal transfer
- Longer ribbon, low energy consumption
- 203/305Dpi
- 6/4ips

BV410D

Cerner certified

- 4-inch flat head
- Direct thermal
- Compact, sleek, LCD screen, fast throughput
- 203/305Dpi
- 7/5ips

BV420D

Cerner certified

- 4-inch flat head
- Direct thermal
- Compact, sleek, fast throughput
- 203/305Dpi
- 7/5ips

BV420D-GL

Cerner certified

- 4-inch flat head
- Direct thermal
- Compact, sleek, fast throughput
- 203Dpi
- 7ips

Toshiba branded consumables are designed and manufactured to work in conjunction with the Toshiba printer range and the different printing technologies they use. They enhance the overall print quality and offer the best possible results whilst causing minimum wear on the working parts—in particular reducing wear on the printhead.

LABEL PRINTERS

MID RANGE

Toshiba's Mid range of barcode label printers provides the functionality and robustness of an industrial printer with the compact footprint and ease of use of a desktop printer. With options for an 8 1/2 inch machine.



MID-RANGE PRINTERS

BA410/420

- 4-inch flat head
- Thermal transfer
- Powerful processor, RFID options, Bluetooth
- 203/305Dpi
- 8ips

B-852-R

- 8.5-inch flat head
- Thermal transfer
- Low cost ownership, 216mm effective print width
- 305Dpi
- 4ips

INDUSTRIAL RANGE

The Toshiba EX range is ideally suited to 'no nonsense' replacement of competitor estates and are available in a variety of resolutions and printhead types for the most diverse industrial printing applications. Ranging from 4, 6 and 8 inch machines.

INDUSTRIAL PRINTERS

B-EX4D2

- 4-inch flat head
- Direct thermal
- Extra-long ribbon, low cost, high specification
- 203Dpi
- 12ips

B-EX4T1

- 4-inch near edge
- Thermal transfer
- Extra-long ribbon, low cost, RFID, ribbon save
- 203/305Dpi
- 14ips

B-EX4T2

- 4-inch flat head
- Thermal transfer
- Extra-long ribbon, low cost, high specification
- 203/305Dpi
- 12ips

B-EX6T1

- 6-inch near edge
- Thermal transfer
- Ribbon save as standard
- Prevents creasing, high speeds, RFID, ribbon save
- 203/305Dpi
- 12ips
- Rotary cutter

B-EX6T3

- 6-inch flat head
- Thermal transfer
- Prevents creasing, high speeds, high throughput
- 203/305Dpi
- 12ips

B-SX8T

- 8-inch near edge
- Thermal transfer
- Ribbon save, industrial design
- 305Dpi
- 8ips



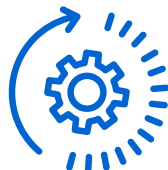
REFURBISHED DEVICES

Certified Toshiba Refurbished Print Devices. Toshiba's refurbished print devices make your dreams a reality, helping to transform your office. A manufacturer refurbish keeps you covered, with call out maintenance by highly trained technicians, full Toshiba capabilities and a 5 year quality satisfaction guarantee—the same as we provide on new devices.

Get an MFD that's been **restored, recreated and reimagined**, without compromising quality.



Restored



Recreated



Reimagined

By refurbishing MFDs, we are able to reduce waste and ensure we are doing our bit for the environment.



MANAGED PRINT SERVICES

Taking your print environment further into the future and beyond. As specialists in office efficiency, our team can help you reduce printing costs by as much as 40%, improve office efficiency by streamlining document management and help you work safer with innovative data protection solutions.

It's all part of how we put leading technology to work for you. Capture, digitise, store, manage and print more efficiently than ever before with Toshiba's Managed Services.

Toshiba's Managed Print Services 5 simple steps:

Toshiba utilises a proven five-step process to assess your needs and objectives, then develop and deploy the ideal solutions to help you succeed.



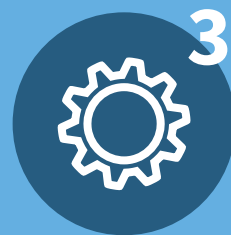
Discover

We meet with key players to help determine your challenges and uncover pain points surrounding document-centric business processes.



Document

A team of Toshiba specialists, pulled from key members of our Industry, Business, and Process teams, is assigned to handle your business.



Design

We design a uniquely customised solution in answer to your business challenges.



Deploy

Working together with your IT, operations and management personnel, we deploy the solutions, including short-term fixes and long-term improvement strategies.



Manage

Ongoing management, monitoring, service and support—onsite and remotely. We service break/fix issues, develop software solutions, and monitor environmental impact.

MANAGED IT SERVICES

Technology should not be a burden. It needs to power your business, driving productivity and collaboration. Your people must be able to do their work from anywhere and at any time, without compromising security. **That's why we offer people-centric solutions to IT issues.**

Our solutions become a platform for achieving your business objectives securely and streamline a never-ending list of providers to one trusted partner.

A flexible approach that delivers. We'll supplement your staff, filling the gaps where you need specialist resources or simply some extra hands on deck. Or if you prefer, we'll take on the whole workload and become your virtual IT department. You get a flexible, secure and highly available network, without any of the hassle of managing it, and all from a single technology partner.



Business continuity, security
and disaster recovery



Managed IT Helpdesk and NOC -
remote monitoring, management
and issues remediation



Key Systems and Infrastructure
- private cloud, on-premise and
hybrid models



Unified Communication -
softphones, video conferencing
and chat



ICT Roadmaps and application
mapping - leveraging expertise
to create an ICT strategy



Business process and workflow
optimisation – allowing digital
creation, collaboration and
archive of your data



Hardware - MFDs,
printers, laptops, desktops,
end user hardware

Gain real-time view of your printer fleet. Gain insights, use reporting tools and control your business.

Say Hello to MyFleet! Toshiba's very own web portal for Enterprise customers that enables you to view, review and plan your print usage.

MyFleet enables you to interact with our management systems without needing to connect, accessing valuable information to manage your print fleet.

View real-time data insights, predictive analytics, and have the ability to be more strategic in your procurement decisions. All of this, in real-time and at your fingertips.



Better procurement decisions through real-time data



Understand where print is being used and how



Analyse print problems and respond to user issues



Make payments and report on finance



Order consumables



Access WHS and Insurance Documents

SUPPORT

Toshiba fosters long-term client relationships based on trust, responsiveness and a commitment to achieve the best results. This dedication to service and support excellence is geared to provide you with the utmost in confidence and satisfaction both now and in the future.

Our wide ranging service and support options are naturally tailored to your specific requirements. With a state of the art warehouse holding inventory, Toshiba is committed to ensuring you are assisted in the most timely and stress-free way possible. Rest assured, our field engineering teams cover Australia, New Zealand and the Pacific Islands to deliver fast technical and help desk support via internal call centres.



NEW ZEALAND

0800 887601

aucklandservice@toshiba-tap.com



AUSTRALIA

1300 887 600

natservice@toshiba-tap.com



PRODUCT SUPPORT

Toshiba-business.com.au/Products



REMOTE ASSISTANCE

Toshiba-business.com.au/Support/Remote-Assist

Want to access additional content and information?
[Register here.](#)

Have further questions?
Check out our [Frequently Asked Questions](#).

OUR BRANCHES

N Z

Auckland

32 Lunn Avenue
Mount Wellington
NZ 1072

09570 8530

N S W

Sydney

12-24 Talavera Road
North Ryde
NSW 2113

1300 794 202

Newcastle

Suite 3, 426 King Street
Newcastle West
NSW 2300

1300 794 202

Q L D

Brisbane

Level 2,
7 Clunies Ross Court
Eight Mile Plains
QLD 4113

1300 794 202

Gold Coast

Suite 31102, Level 11,
Tower 3, 5 Lawson St
Southport
QLD 4215

1300 794 202

Sunshine Coast

11 Newspaper Place
Maroochydore
QLD 4558

1300 794 202

V I C

Melbourne

Building C, Ground Floor,
211 Wellington Road
Mulgrave
VIC 3170

1300 794 202

A C T

Canberra

Unit 8, 26 Ipswich Street
Fyshwick
ACT 2609

1300 794 202

O T H E R

Need further support?

See what partners
are available in your
area.



Together Information is Toshiba's vision for how people and organisations create, record, share, manage and display ideas and data. It is based on our belief that the most successful organisations are those that communicate information in the most efficient way. We make that possible through an integrated portfolio of industry-specific solutions, all of which reflect Toshiba's commitment to the future of the planet. For more information please visit www.toshiba-business.com.au

TOSHIBA

New Zealand

32 Lunn Ave, Mt Wellington

Auckland, 1072,

New Zealand

T: 9 570 8530

www.toshiba-business.co.nz

TOSHIBA (Australia) Pty Limited

Building C, 12-24 Talavera Road,

North Ryde, 2113,

Australia

T: 1300 794 202

www.toshiba-business.com.au