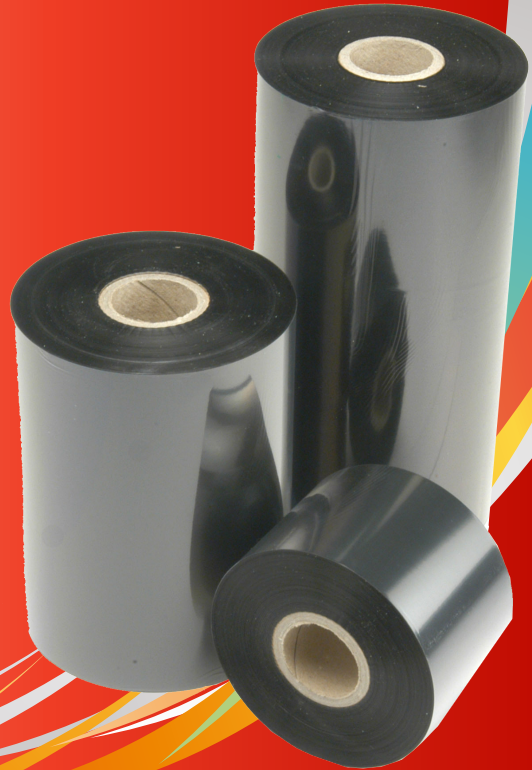


KANPEKI SERIES

# P15

## EXTREME SOLUTION



### KEY CHARACTERISTICS

- Near edge technology enables fast, sharp keying
- Extreme adhesion, chemicals and harsh environments
- Salvages labels with incorrect varnishes
- Gentle on your print head



Pharmaceutical



Gardening



Inventory



Warehouse



Electrical



Wash Care



Flexible Packaging



Medical



Automotive



Chemical

Media	P15
<b>Paper</b>	
• Machine Coat	✗
• Semi Gloss	✗
• Gloss	✗
<b>Synthetic</b>	
• PE	✓
• PPE	✓
• PET	✓
<b>Synthetic Tags</b>	✓
<b>Wash Care</b>	✓
<b>Flexible Film</b>	✓

### DID YOU KNOW?

P15 can print on any thermal printer due to its release layer.

