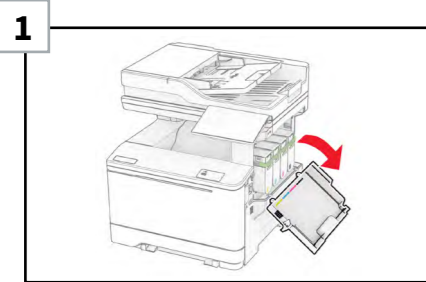


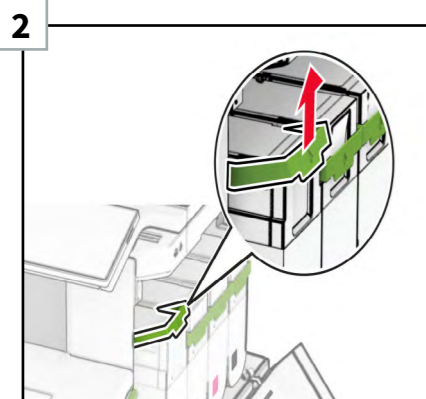
### REPLACING A TONER CARTRIDGE



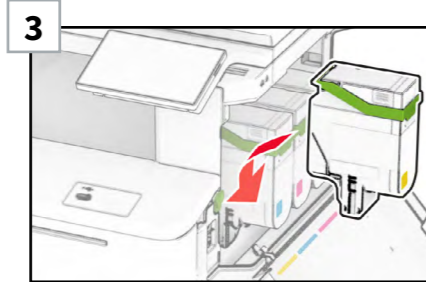
Open door B.

#### ⚠ WARNING

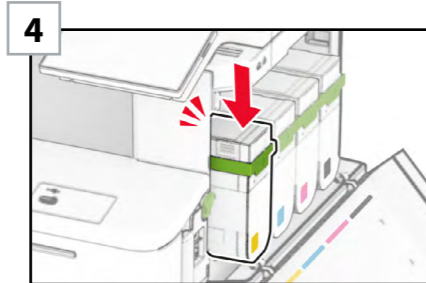
**Potential Damage.** To prevent damage from electrostatic discharge, touch any exposed metal frame of the printer before accessing or touching interior areas of the printer.



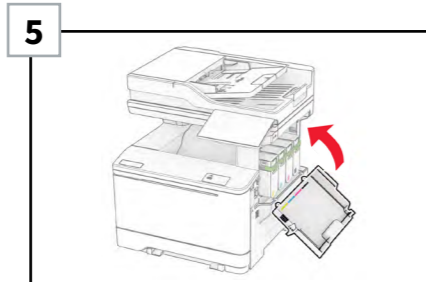
Remove the used toner cartridge.



Unpack the new toner cartridge.

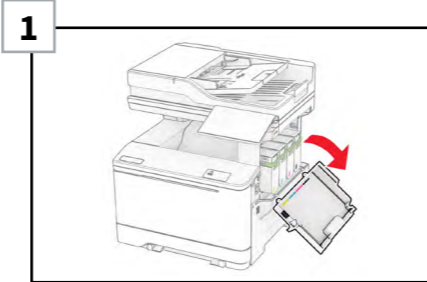


Insert the new toner cartridge until it clicks into place.



Close the door.

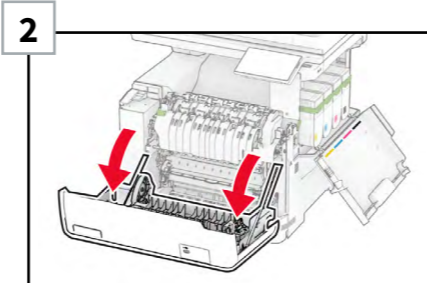
### REPLACING AN IMAGING KIT



Open door B.

#### ⚠ WARNING

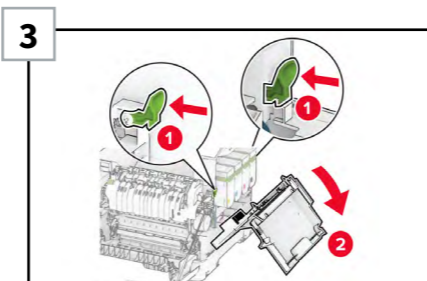
**Potential Damage.** To prevent damage from electrostatic discharge, touch any exposed metal frame of the printer before accessing or touching interior areas of the printer.



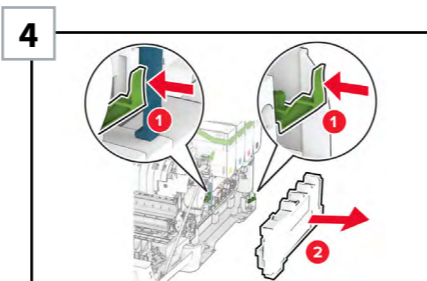
Open door A.

#### ⚠ CAUTION

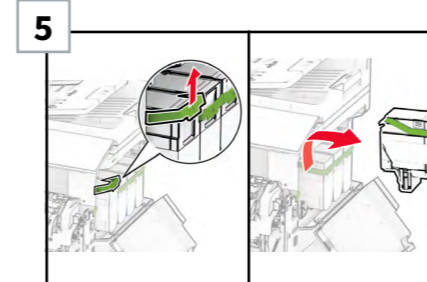
**Hot surface.** The inside of the printer might be hot. To reduce the risk of injury from a hot component, allow the surface to cool before touching it.



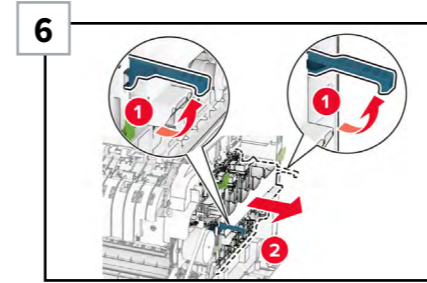
Remove the right cover.



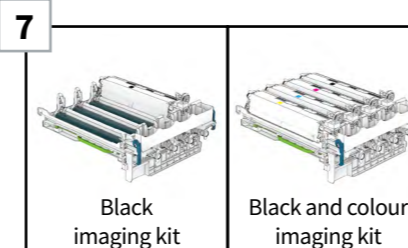
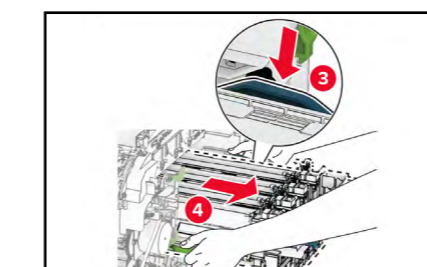
Remove the waste toner bottle.



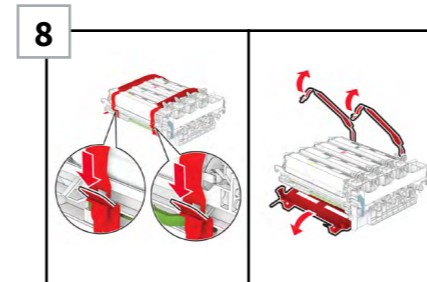
Remove the toner cartridges.



Remove the used imaging kit.



Unpack the new imaging kit.



Remove the packing material.

**Note:** If you are replacing the black imaging kit, then insert the magenta, cyan, and yellow developer units into the new imaging kit.

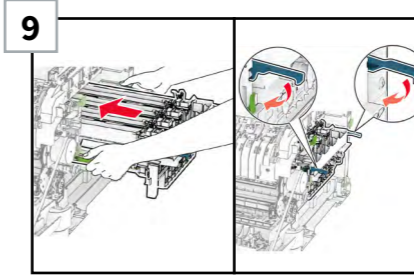


#### ⚠ WARNING

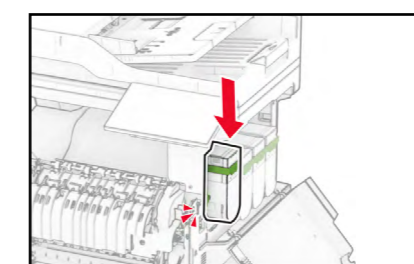
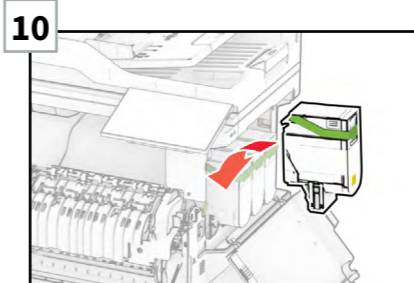
**Potential Damage.** Do not expose the imaging kit to direct light. Extended exposure to light may cause print quality problems.

#### ⚠ WARNING

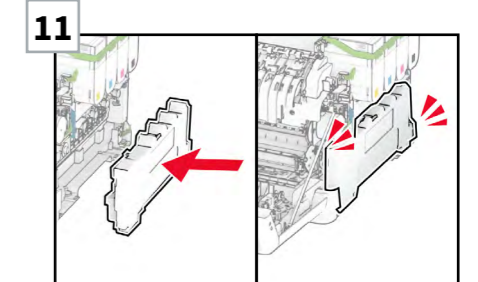
**Potential Damage.** Do not touch the photoconductor drum. Doing so may affect the quality of future print jobs.



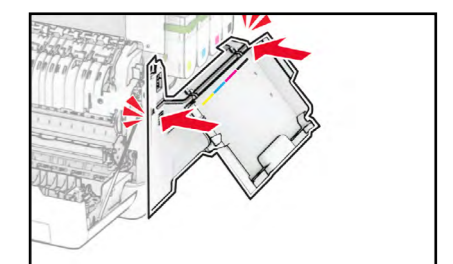
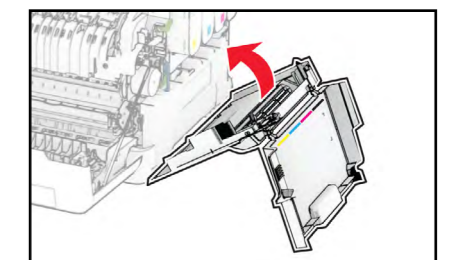
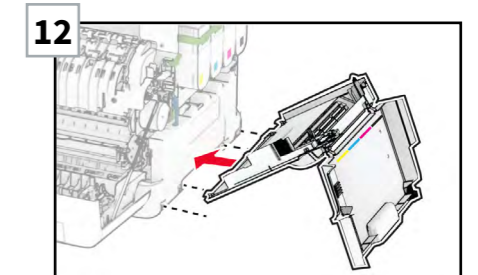
Insert the imaging kit until it is fully seated.



Insert the toner cartridges until they click into place.



Insert the waste toner bottle until it clicks into place.



Attach the right cover until it clicks into place.



Close the door A, and then close door B.