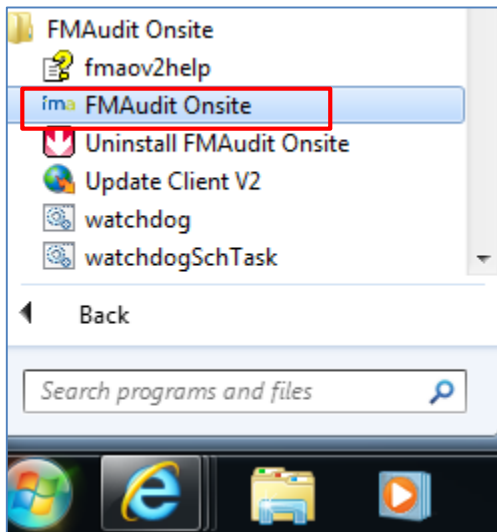


FMAudit Onsite - Configuring The Proxy Settings

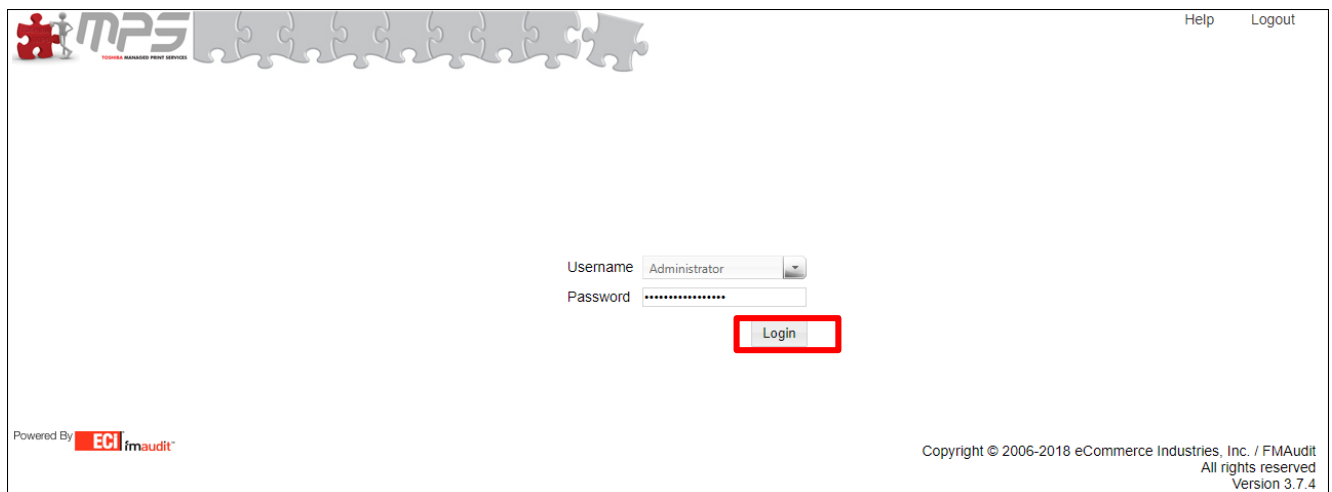
This document was created using the below systems:

- FMAudit Onsite Version 3.7.4
- Microsoft Windows 10

1. FMAudit Onsite can be configured locally via a web browser pointing to <http://127.0.0.1:33330> or by clicking the FMAudit Onsite icon within Start → All Programs → FMAudit Onsite



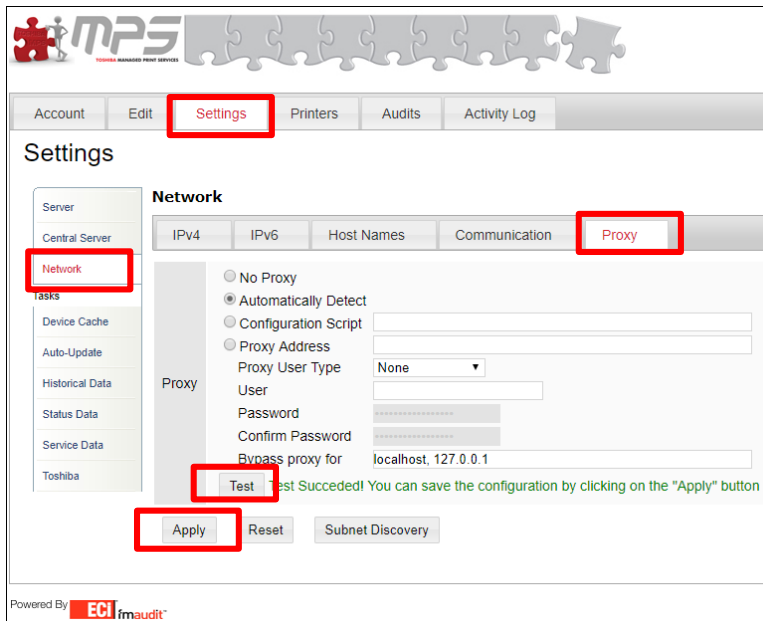
2. Click Login on this prompt



3. Select settings



4. Click on **Network** and then click Proxy

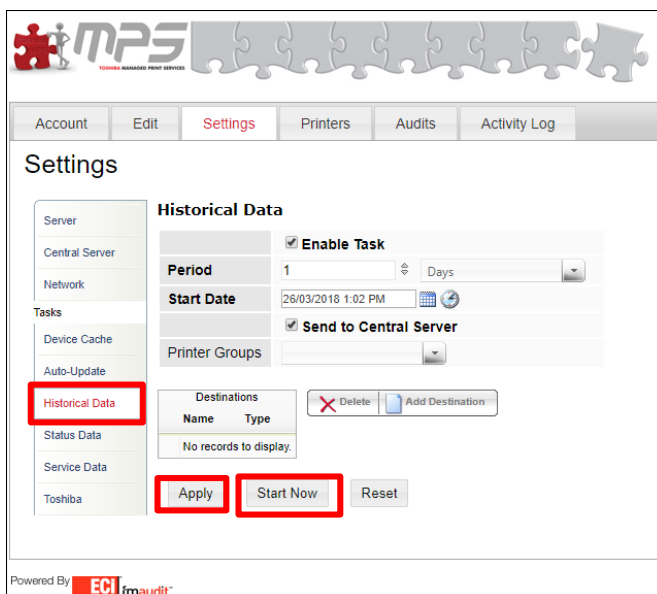


Choose Proxy Address and set up as per below details

- Proxy Address: IP Address: Port number (example:<IP Address>:8080)
- Proxy user Type :Specific
- User: Admin (User Name)
- Password: Admin (User Password)

To do a test. If Successful, please click Apply.

5. Select Historical Data under the tasks → Start Now → Apply.



6: Select Status Data under task→Start now→Apply.

The screenshot shows the 'Settings' page for Toshiba MPS. The 'Status Data' section is highlighted with a red box. The 'Enable Task' checkbox is checked. The 'Period' is set to 4 Hours. The 'Start Date' is 26/03/2018 1:02 PM. The 'Send to Central Server' checkbox is checked. The 'Printer Groups' dropdown is empty. The 'Destinations' table is empty. The 'Apply', 'Start Now', and 'Reset' buttons are highlighted with red boxes.

Server
Central Server
Network

Tasks
Device Cache
Auto-Update
Historical Data
Status Data
Service Data
Toshiba

Status Data

Enable Task

Period: 4 Hours

Start Date: 26/03/2018 1:02 PM

Send to Central Server

Printer Groups: [Dropdown]

Destinations	
Name	Type
No records to display.	

Buttons: Apply, Start Now, Reset

Powered By ECI fmaudit™

7. Once the adding proxy details is successful or if you require assistance in setting up FMAudit please send email to fmaudit@toshiba-tap.com or call 1300 887 600 option 1.