

TOSHIBA

Leading Innovation >>>

How to Guide...



Printing on AquaAce
paper

Printing Documents.

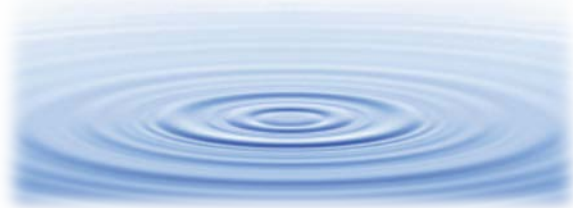


Highlight Feature

- Water resistant and UV resistant to ensure your prints look perfect in any kind of weather or condition.
- No additional equipment required - Toshiba AquaAce™ Paper can be used with most e-STUDIO machines.

Pre-requisite

- e-STUDIO machine.
- AquaAce paper.

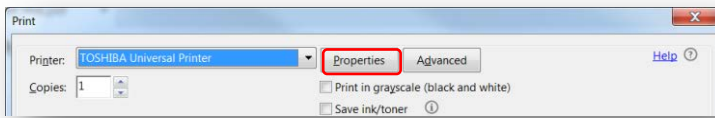


Important Information

- Acceptable paper sizes for printing - A4, A4 business card, A3, A3 two-fold, A3 three-fold, B4, B5, Banner 900mm and 1200mm.
- Printer Driver: Paper Type Special 1 must be selected.
- Bypass tray printing only.

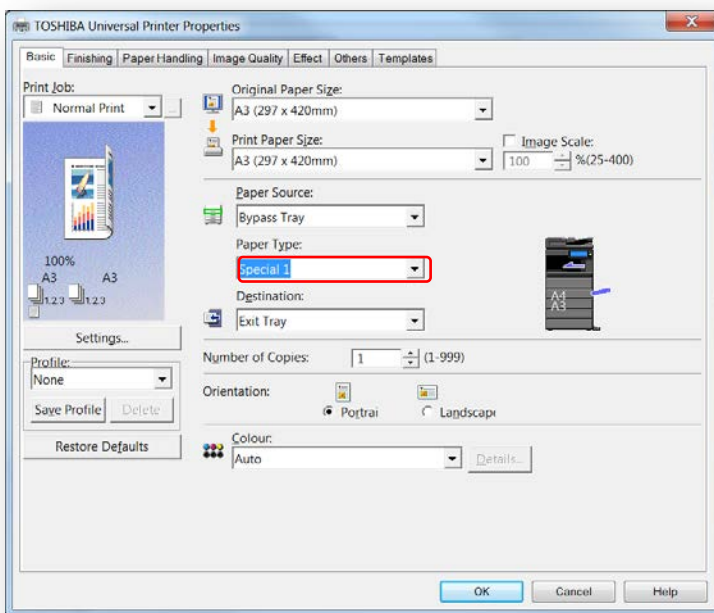
Printing on A4 - A3

STEP 1



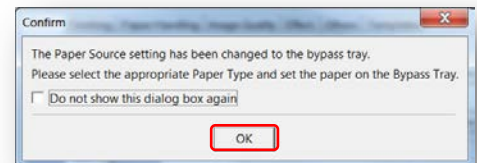
On the **Print** window, select the machine print driver and click **Properties** key.

STEP 2

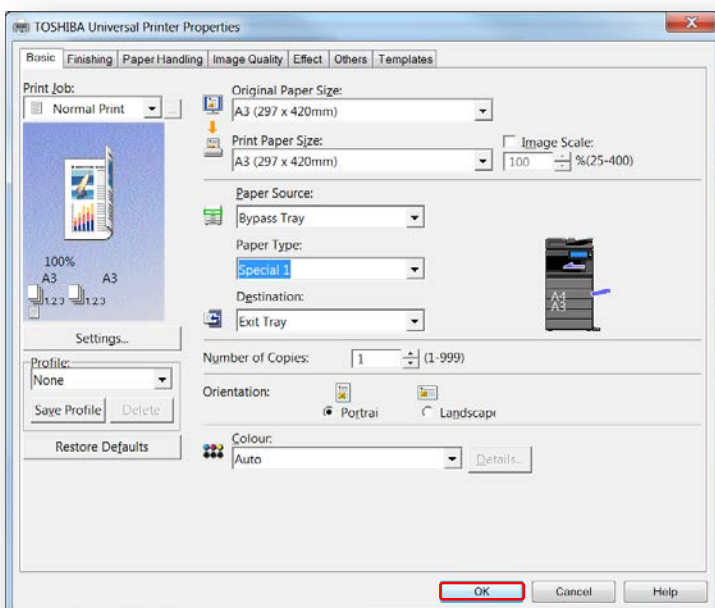


Go to **Paper Type**: From the drop down menu select **“Special 1”**.

Confirmation box will appear Select **“OK”**.



STEP 3

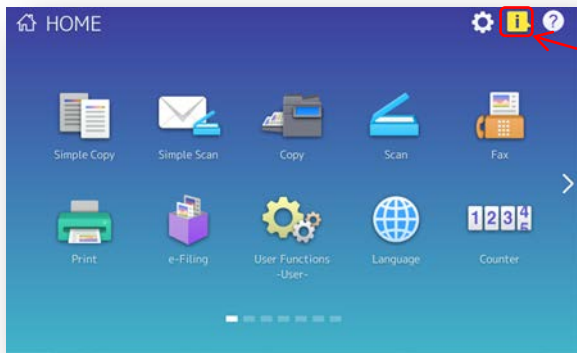


With **“Special 1”** selected in the paper type, printing is only done via the Bypass tray.

Select **“OK”**

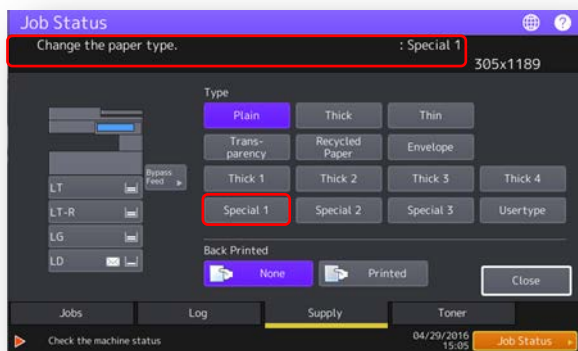
At the machine

STEP 3



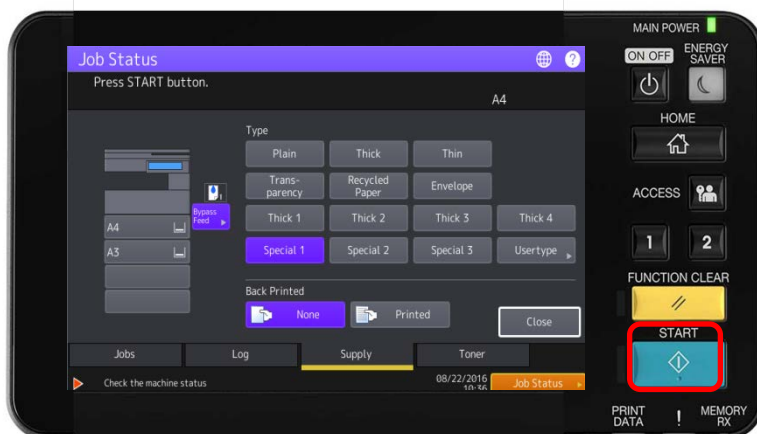
At the MFP, on the Home screen, press the flashing Information icon. It's flashing to indicate that settings must be made on the MFP to address a print job waiting in the queue - presumably your banner.

STEP 4



The message in the display will prompt you to "Change the paper type to Special 1". Select box "Special 1"

STEP 5

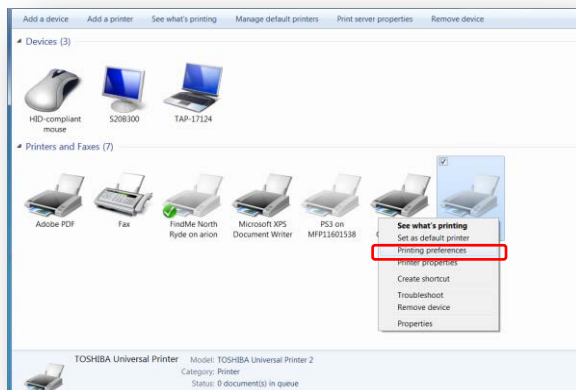


Place your AquaAce paper in the Bypass tray and select "Start" to print your job.

Set-up for Banner Print

In order to print banners you must first create a custom banner page size in the e-STUDIO print driver for the size of the banners that you will be printing.

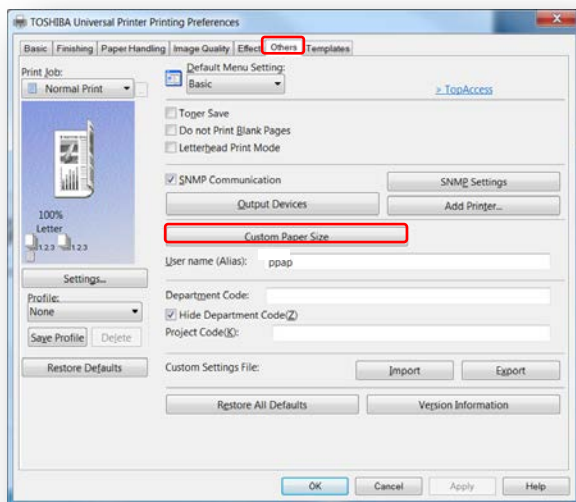
STEP 1



Operating systems may differ, shown here is Windows 7 Devices and Printers .

Right mouse click and select **“Printing Preferences”** from the drop down menu.

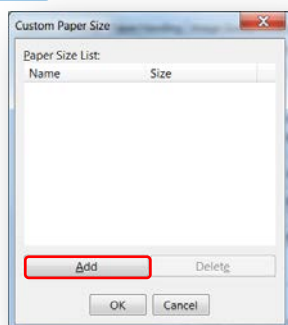
STEP 2



From the Printing Preferences screen select the **“Others”** tab.

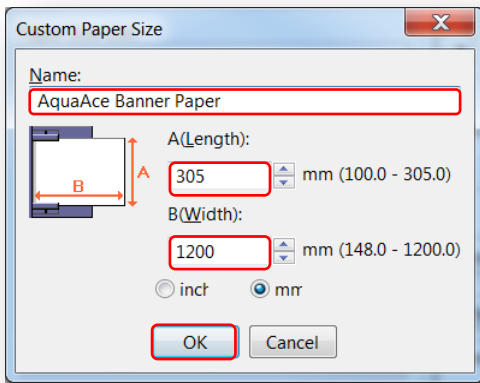
Select **“Custom Page Size”**.

STEP 3



Select **“Add”**.

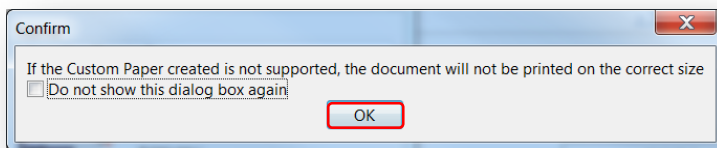
STEP 4



On the “Custom Page Size”

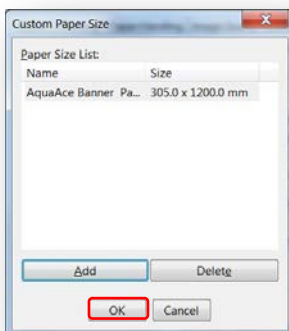
- **Name:** type in the name of your new customer paper size (i.e. “AquaAce Banner Paper”).
- Key in **A (Length):** of 305mm & **B (Width):** of 900 or 1200mm depending on size.
- Select “**OK**”.

STEP 5



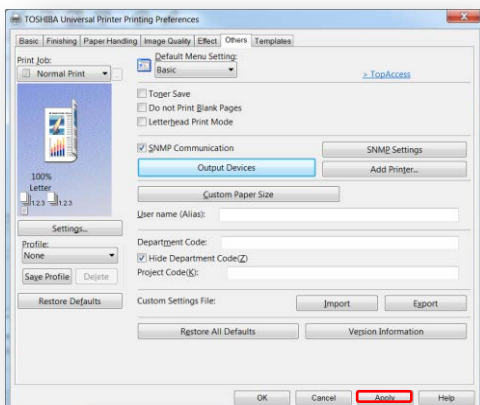
Select “**OK**” to Confirm pop-up window.

STEP 6



Select “**OK**”.

STEP 7

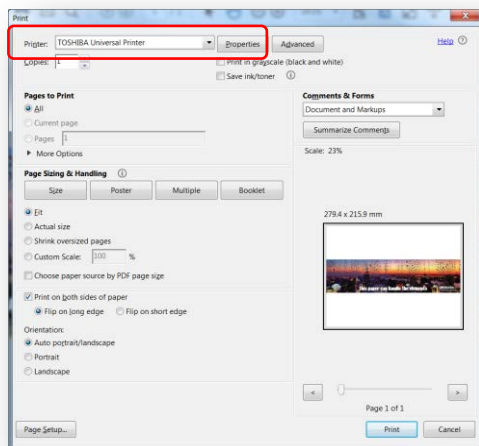


Select “**Apply**”, your customer page size is now added to your printer driver. Close the Printing Preferences screen.

Printing on Banner Paper

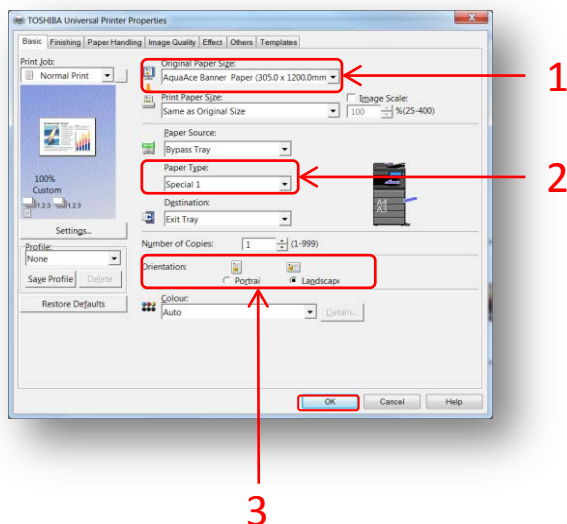
This step by step overview will walk you through the process of printing on AquaAce banner paper.

STEP 1



Print your document and the print screen will appear. Select the “**print driver**” the one you created the customer paper size for banner and select “**Properties**”.

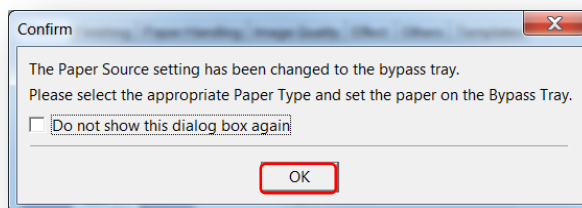
STEP 2



3. Orientation select “**Landscape**” then select “**OK**”.

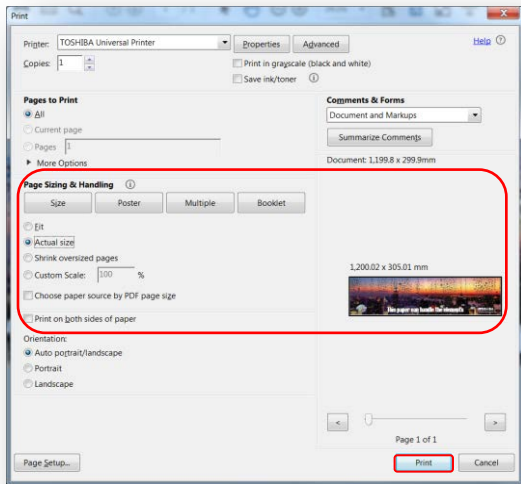
1. Original Paper Size from the pull down menu select “**AquaAce Banner Paper**”.

2. Paper Type select “**Special 1**”.



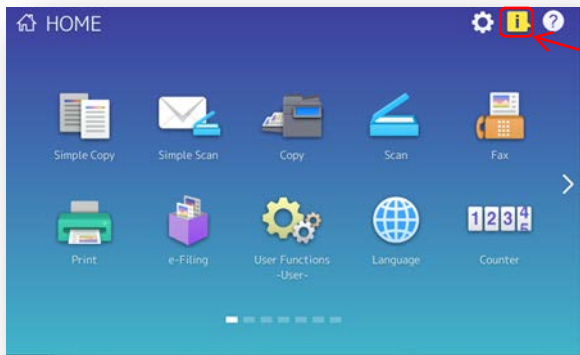
Select “**OK**” on the pop-up window to Confirm that the "job needs to be fed manually through the Bypass Tray". The system will automatically select the Bypass Tray as the Paper Source: for the banner paper.

STEP 3



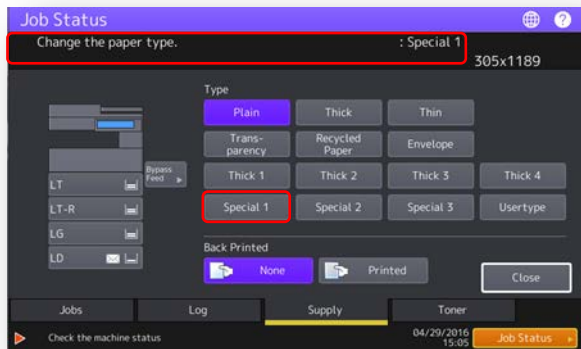
This example shows the Print screen as it appears in Adobe Acrobat Reader DC. Under the Page Sizing & Handling section of the Print screen you can select **Fit** or **Actual size** (when printing a PDF that is sized to 305mm x 900 or 1200mm). Select **“Print”**.

STEP 4



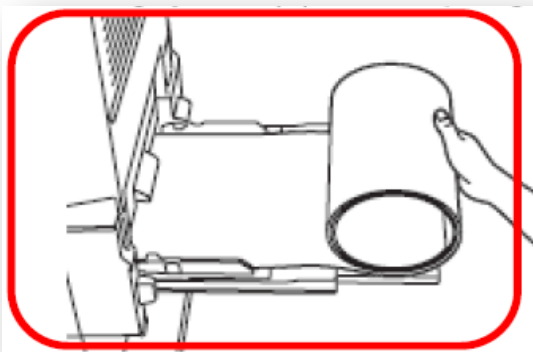
At the MFP, on the Home screen, press the flashing Information icon. It's flashing to indicate that settings must be made on the MFP to address a print job waiting in the queue - presumably your banner.

STEP 5



The message in the display will prompt you to “Change the paper type to Special 1”. Select box **“Special 1”**

STEP 6



Place the **AquaAce banner** paper in the **Bypass tray** and then press **“START”**